



mcfarlane
property.com

1 Martinsell Cottages, Oare

Offers in Region of £475,000

mcfarlane
property.com

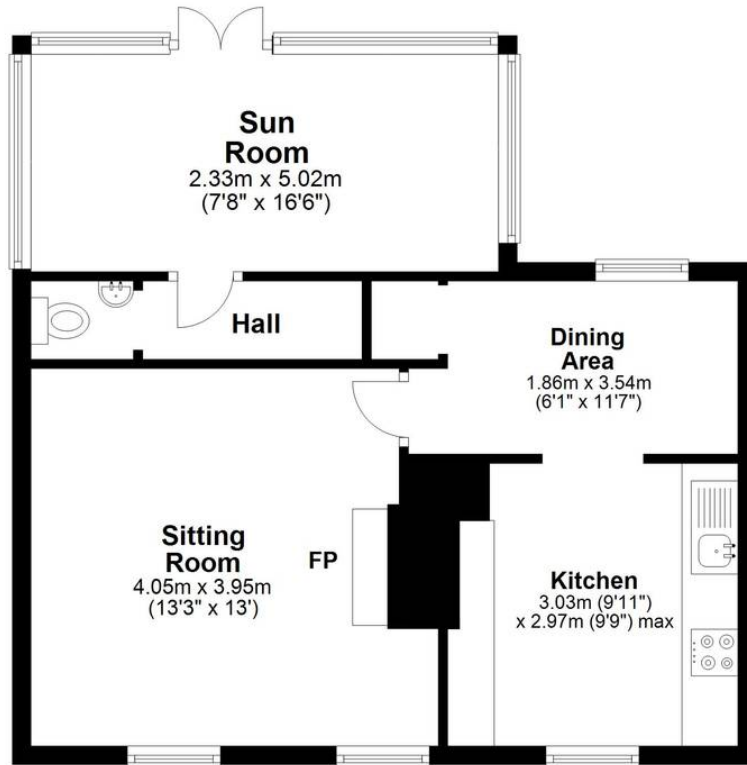
1 Martinsell Cottages

1, Martinsell Cottages is one of six listed grade II cottages built for Sir Geoffrey Fry, of Fry's Chocolate family who lived at Oare House. The cottages were designed by Clough Williams-Ellis, the architect who designed Portmeirion in Wales. The cottage is pink painted brick with a double ridged pantile roof with boxed eaves with sixteen panes sash windows some with boarded shutters. The cottage has a comfortable internal atmosphere and benefits from a generous garden, views over open countryside and off street parking. The light and airy sitting room has the benefit of a brick fireplace fitted with a wood burning stove and wooden flooring. The double aspect kitchen/dining room having laminate wood effect floor, is well fitted with a range of floor and wall units. There is also a cloakroom and a well proportioned conservatory opening to the garden. On the first floor there are three bedrooms and a bathroom.



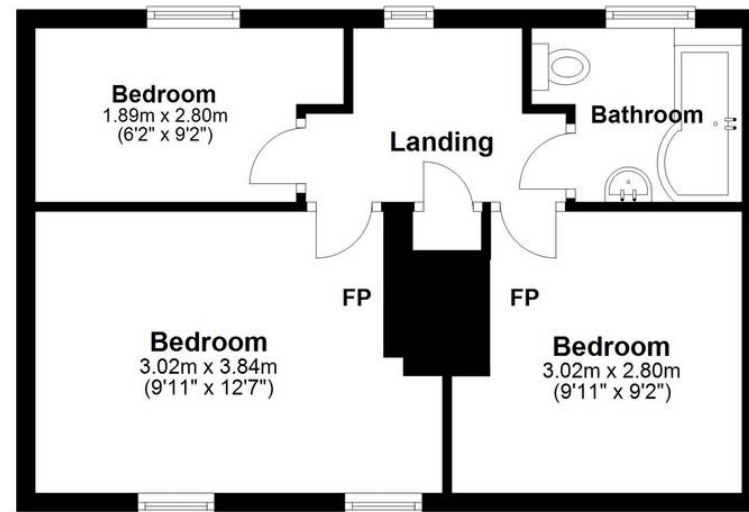
Ground Floor

Approx. 50.8 sq. metres (546.6 sq. feet)



First Floor

Approx. 37.8 sq. metres (407.2 sq. feet)



Total area: approx. 88.6 sq. metres (953.7 sq. feet)

Marlborough Sales

McFarlane Sales & Letting, 106 High Street - SN8 1LT

01672
514380

• marlborough@mcfarlaneproperty.com • www.mcfarlaneproperty.com/

mcfarlane
property.com