



Harley Court
Marlborough

Asking Price of £355,000

mcFarlane
property.com

Harley Court

3  2  1 

Property Description

This stunning first floor duplex apartment with parking is a real gem. Tucked away at the end of a cul de sac giving security and with outstanding views over the River Kennet. This unique two floor apartment is within easy walking distance of Marlborough's famous High Street. The living room and master bedroom both benefit from high ceilings which gives a light and airy feel. The three double bedrooms all have built-in wardrobes with an en-suite shower in the principal bedroom.

To fully appreciate this apartment and where it's located call to arrange a viewing. ****NO CHAIN**** Leasehold, with an option to purchase the Freehold.



Marlborough

Marlborough is an historic and thriving market town providing an extensive range of quality independent and well known retailers, public houses, restaurants and cafes along with plenty of amenities including the famed Marlborough College, a sports centre and an excellent state secondary school, St. Johns.

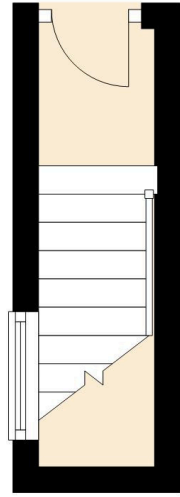
The town is sited along the M4 corridor close to J15. Intercity (Paddington) rail connections can be found at Swindon, Hungerford, Great Bedwyn and Pewsey offering access to London and the west country..

The countryside surrounding Marlborough is within the North Wessex Downs Area of Outstanding Natural Beauty and includes the historic world heritage site of nearby Avebury and Savernake forest.



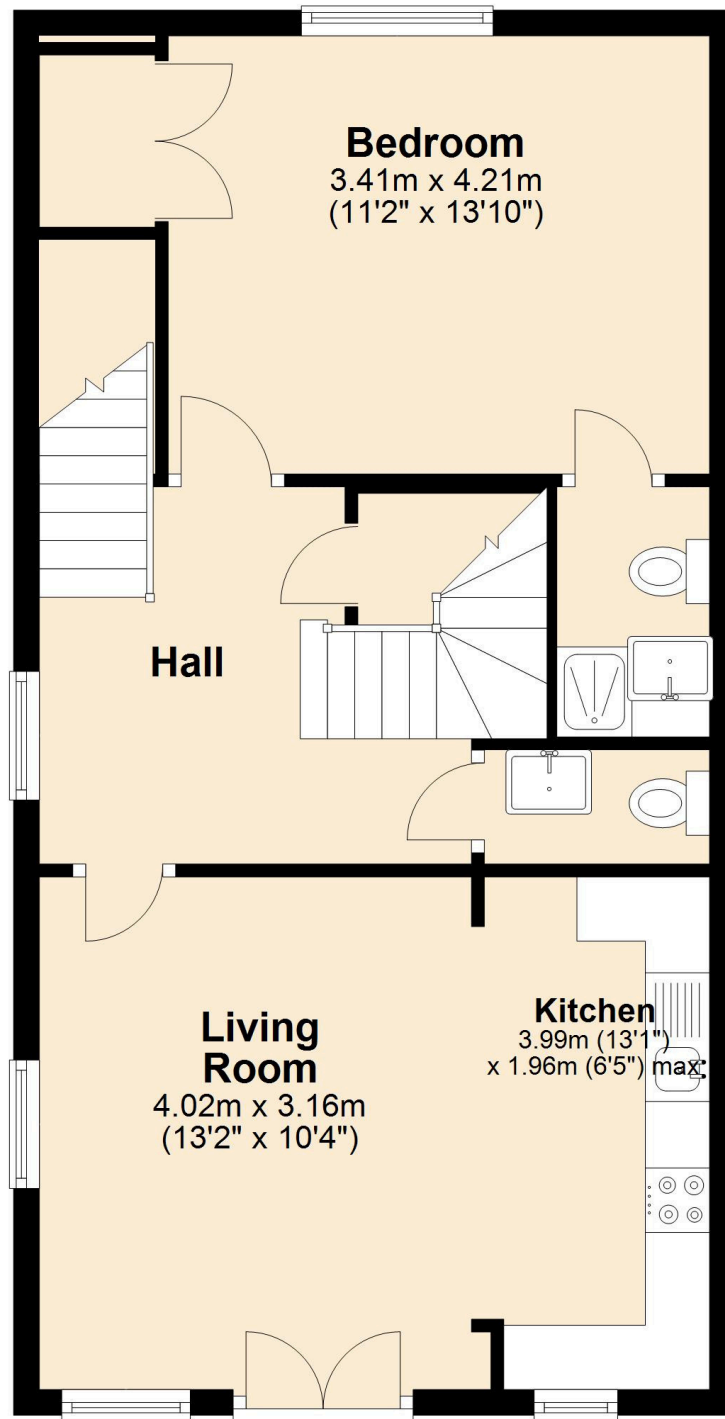
Ground Floor

Approx. 3.1 sq. metres (33.1 sq. feet)



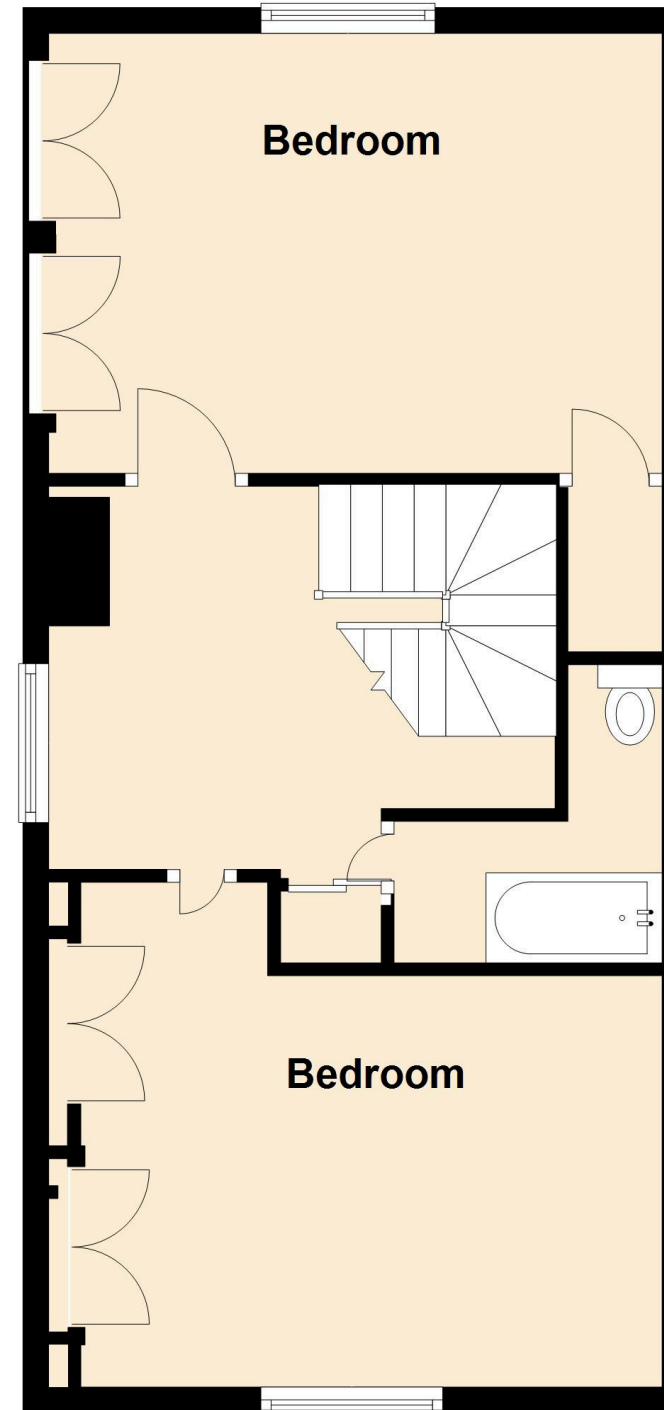
First Floor

Approx. 55.0 sq. metres (591.5 sq. feet)



Second Floor

Approx. 50.2 sq. metres (540.8 sq. feet)



Total area: approx. 108.3 sq. metres (1165.4 sq. feet)

We 
where you
LIVE

Our team are friendly, experienced and are all local. They know it better than they do their own living rooms and can help you find what you're looking for because we love where we live.

We would be delighted to show you around this property.

**Because every home
needs a personal touch.**

**If you would like to view this
property then please get in touch.**

☎ 01672 514380

✉ marlborough@mcfarlaneproperty.com

mcfarlaneproperty.com

mcfarlane
property.com

Cirencester.

1 Silver Street,
Cirencester GL7 2BJ
☎ 01285 303100

Cricklade.

102 High Street
Cricklade SN6 6AA
☎ 01793 751044

Marlborough.

106 High Street
Marlborough SN8 1LT
☎ 01672 514380

North Swindon.

The Village Centre
Redhouse SN25 2FW
☎ 01793 296600

Old Town.

28-30 Wood Street
Swindon SN1 4AB
☎ 01793 296880

Lettings.

28-30 Wood Street
Swindon SN1 4AB
☎ 01793 611841

Agents Note: Whilst every care has been taken to prepare these sales particulars, they are for guidance purposes only. All measurements are approximate and for general guidance purposes only and whilst every care has been taken to ensure their accuracy, they should not be relied upon and potential buyers are advised to recheck the measurements