



## 3 Bedroom Semi-Detached Cottage

Oxford Cottages, Alton Barnes, Marlborough, SN8 4LD

Asking Price Of £425,000

**mcfarlane**  
property.com

## Oxford Cottages

Alton Barnes

- 
- **Overlooks open countryside**
  - **The Hamlet of Alton Barnes**
  - **Three Bedrooms**
- 

Situated in the Vale of Pewsey, designated as an Area of Outstanding Beauty, the property enjoys breathtaking surroundings. The Barge Inn and Honey Street Cafe are delightful destinations located on the Kennet and Avon Canal in Honey Street. The Kennet and Avon Canal is a beautiful waterway that stretches across southern England, perfect for recreational activities.

Nearby, Pewsey provides day-to-day amenities and a railway station with regular direct services to London Paddington (59 minutes) and to the Southwest. Additional amenities can be found in the market towns of Devizes (6 miles) and Marlborough (8 miles). Reputable schools, including St. John's Academy, Dauntsey's, and Marlborough College, are within the area.



# Oxford Cottages

Alton Barnes

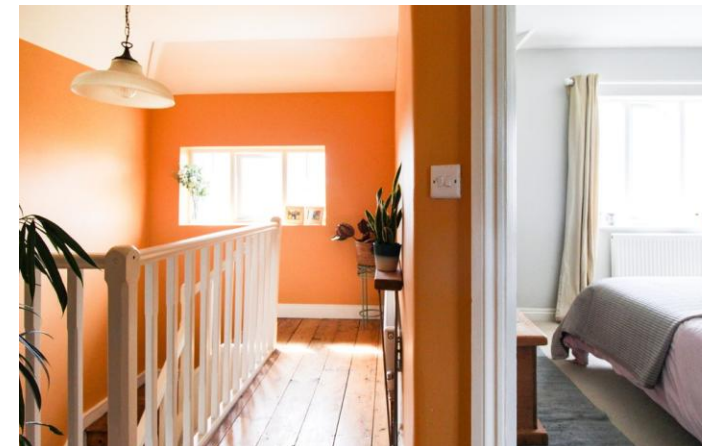
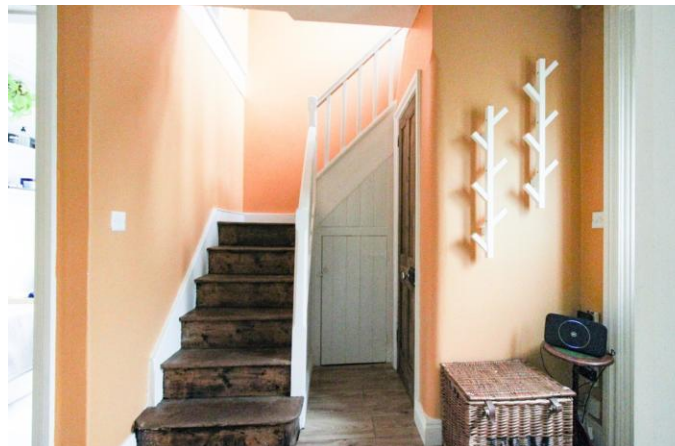
## Property description

Oxford cottage is situated in the hamlet of Alton Barnes with captivating views of the famous White Horse, this three-bedroom semi-detached cottage is a charming freehold property dating from the 1920's. The house boasts a tastefully decorated interior, decorated in neutral and heritage tones. The sitting room welcomes you with a wood-burning stove and French doors opening to an adjoining garden terrace. An elegant dining room with a stunning fireplace offers a lovely aspect of the front garden, a well-equipped kitchen featuring Shaker style fitted cupboards, original wooden work surfaces, and integrated appliances. The kitchen gives access to a versatile rear porch which leads to the landscaped garden. The first floor comprises a bright landing leading to three bedrooms, two of which have charming feature fireplaces, whilst the third is currently used as a study. All bedrooms have splendid views of the countryside and the delightful cottage gardens.



## Outside

The exterior features a thoughtfully landscaped front and back garden with distinct areas, mature trees, and raised vegetable beds. Ample parking for several cars is available. This property is an ideal retreat, combining charming interiors, stunning views, and a well-designed garden for relaxation and outdoor entertaining.





### Ground Floor

Floor area 49.3 sq.m. (531 sq.ft.) approx



### First Floor

Floor area 38.6 sq.m. (415 sq.ft.) approx

Total floor area 87.9 sq.m. (946 sq.ft.) approx

This Floor Plan is for illustration purposes only and may not be representative of the property. The position and size of doors, windows and other features are approximate. Unauthorized reproduction prohibited. © PropertyBOX

We   
where you  
**LIVE**

Our team are friendly, experienced and are all local. They know it better than they do their own living rooms and can help you find what you're looking for because **we love where we live.**

We would be delighted to show you around this property.

**Because every home needs a personal touch.**

**If you would like to view this property then please get in touch.**

☎ 01672 514380

✉ [marlborough@mcfarlaneproperty.com](mailto:marlborough@mcfarlaneproperty.com)

[mcfarlaneproperty.com](http://mcfarlaneproperty.com)

**mcfarlane**  
property.com

**Cricklade.**  
102 High Street  
Cricklade SN6 6AA  
☎ 01793 751044

**Marlborough.**  
106 High Street  
Marlborough SN8 1LT  
☎ 01672 514380

**Old Town.**  
28-30 Wood Street  
Swindon SN1 4AB  
☎ 01793 296880

**Swindon.**  
The Village Centre,  
Redhouse SN25 2FW  
☎ 01793 296600

Agents Note: Whilst every care has been taken to prepare these sales particulars, they are for guidance purposes only. All measurements are approximate are for general guidance purposes only and whilst every care has been taken to ensure their accuracy, they should not be relied upon and potential buyers are advised to recheck the measurements

