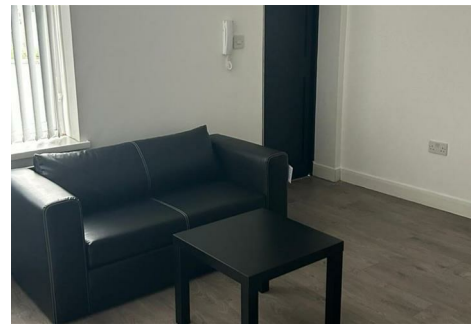




# RE/MAX

Elite



## 38-39 Lichfield Street, Walsall, WS1 1TJ

**£775**

MODERN FULLY FURNISHED FLAT WITH ALLOCATED PARKING IN WALSALL

Located in a private block near Walsall Town Centre, this fully furnished one-bedroom flat is perfect for working professionals seeking a ready-to-move-in home.

Available from 1st November 2024, with viewings starting on 2nd October 2024, this modern property offers convenience and style in a sought-after location.

The flat comes fully equipped with furniture and appliances, including a double bed, sofa, coffee table, bedside drawers, and sleek kitchen appliances—such as a cooker, washer, fridge, and oven. The contemporary décor complements the open-plan design, making it a comfortable and stylish living space.

With immaculate communal areas maintained by RE/MAX and professional cleaners, The property also comes with an allocated parking space, this flat offers everything you need for a hassle-free move.

Walsall offers several convenient transport options for those without a car. You can easily get around using public transport, taxis, or services designed for accessibility.

### Living Area

An inviting space with a black leather sofa and a small coffee table. The room is bathed in natural light from a large window, providing a bright and airy feel.

### Kitchen

This open-plan kitchen is fitted with modern black cabinetry, a washer, fridge, electric cooker, oven, and extractor fan. With ample counter space, it's perfect for cooking at home.

### Shower Room

Modern and sleek, the shower room features a stylish walk-in shower, basin, and toilet. The walls are fully tiled with a clean marble effect for a luxurious finish.

### Bedroom

A spacious double bedroom furnished with a comfortable bed and bedside drawer. The large window fills the room with natural light and the neutral décor enhances the sense of space.

### Communal Areas

The communal areas within the block are well-maintained and offer a high standard of cleanliness and presentation throughout.

### Parking

The property comes with an allocated parking space for convenience.

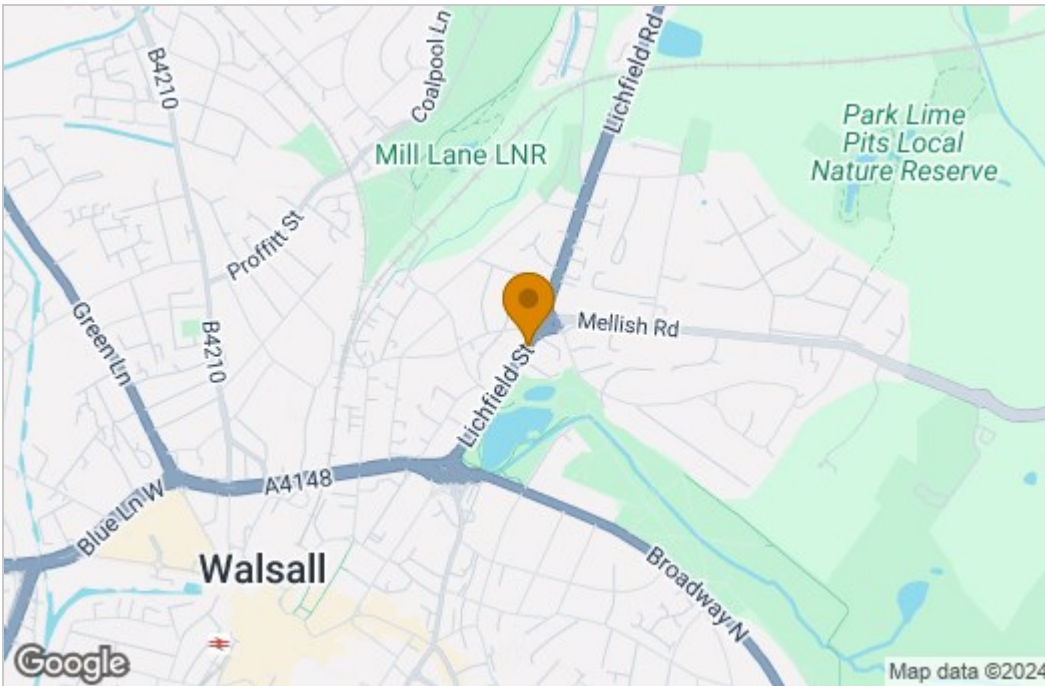
### Book Your Viewing Today!

Don't miss out on this fantastic opportunity!

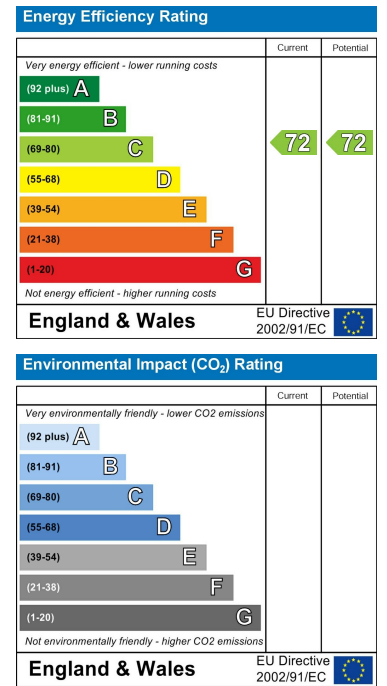
Contact RE/MAX to arrange your viewing starting from 2nd October 2024. This fully furnished flat won't be on the market for long—secure your viewing now and make it your new home from 1st November 2024. Call or email today for more information!

# Floor Plan

## Area Map



## Energy Efficiency Graph



These particulars, whilst believed to be accurate are set out as a general outline only for guidance and do not constitute any part of an offer or contract. Intending purchasers should not rely on them as statements of representation of fact, but must satisfy themselves by inspection or otherwise as to their accuracy. No person in this firm's employment has the authority to make or give any representation or warranty in respect of the property.

155 Lichfield Rd, Rushall, Walsall, Staffordshire, WS4 1HA  
 Tel: +44 (0) 1922 322988 Email: elite@remax.co.uk www.remaxlocalestateagents.co.uk