



RE/MAX

PROPERTY HUB



8 Old Hall Street, Liverpool, L3 9PA

£825 Per month

ALBANY BUILDING - ONE BEDROOM DUPLEX APARTMENT - FURNISHED - TWO BATHROOMS - VIEWINGS MONDAY 22nd April 2024.

RE/MAX are pleased to invite you to view this large one bedroom apartment split over two levels providing plenty of space. Available to move in from 28th April and benefiting from a main bathroom and en-suite too. Offered FURNISHED and does NOT include any parking sorry. With large original bright windows, high ceilings and plenty of space the apartment offers a perfect accommodation for a couple or single occupant. Located on Old Hall Street with Moorfields train station on your door step and plenty of local amenities. The building offers a communal courtyard, on site CCTV and a manned concierge. Utility bills are NOT included and there is no on site parking included with this rental. Council Tax Band 'B' with Liverpool City Council. EPC Rating B(81). Holding Deposit is the equivalent of one weeks' rent.

Kitchen



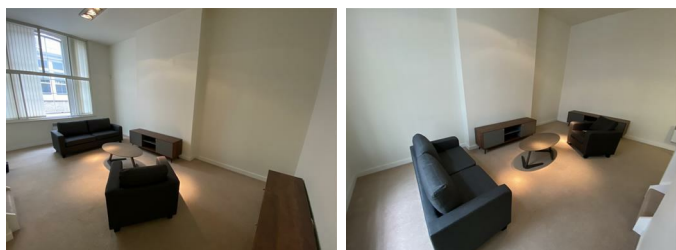
Spacious modern kitchen with integrated dishwasher, washer, oven, hob and extractor fan unit and free standing fridge freezer.

Bathroom



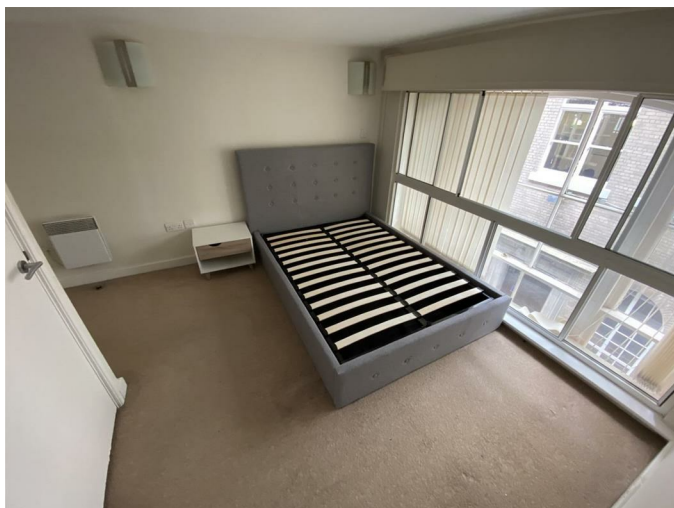
Main bathroom on the lower level fully tiled with bath, sink and toilet and including a storage cupboard.

Lounge



Large open lounge space

Bedroom



Double sized bedroom with access to en-suite shower room

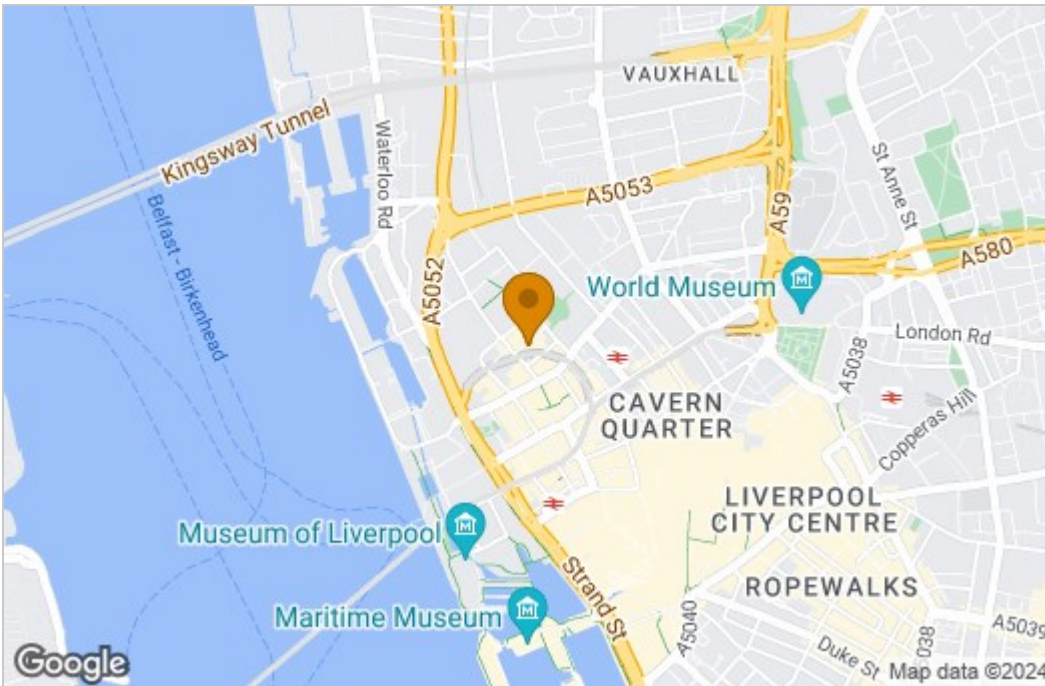
En-Suite



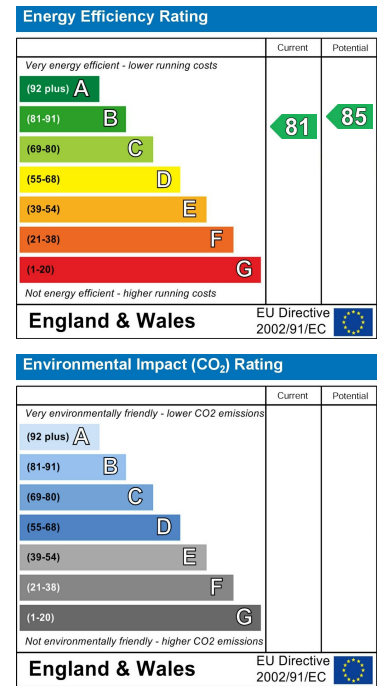
En-suite shower room off the bedroom.

Floor Plan

Area Map



Energy Efficiency Graph



These particulars, whilst believed to be accurate are set out as a general outline only for guidance and do not constitute any part of an offer or contract. Intending purchasers should not rely on them as statements of representation of fact, but must satisfy themselves by inspection or otherwise as to their accuracy. No person in this firm's employment has the authority to make or give any representation or warranty in respect of the property.

Liverpool,
 Tel: +44 (0) 7790 071956 Email: peter.burge@remax.uk <https://remax.uk/associates/PeterBurge>