



RE/MAX

PROPERTY HUB



15 Sampson Avenue, Uttoxeter, ST14 5FG

Asking price £250,000

A Three bedroom semi-detached property on the popular Bramshall Meadows development, the property benefits from driveway, entrance hallway, lounge, open plan kitchen diner, utility room, W/C. On the first floor is the master bedroom with ensuite shower room, two further bedrooms and family bathroom.

Lounge 15'11" x 12'5" (4.87 x 3.81)



With window to the front elevation and archway leading to the Kitchen Diner

Kitchen Diner 15'6" x 11'3" (4.74 x 3.43)



With French doors leading out to the patio and rear garden. The fitted kitchen is complete with oven, gas hob, extractor fan and fitted dishwasher, one and half sinks and drainer.

Utility Room 6'0" x 5'2" (1.83 x 1.60)



With plumbing for washing machine.

W/C 6'0" x 4'1" (1.83 x 1.26)



A low level W/C and wash hand basin.

Bedroom One 12'5" x 9'4" (3.79 x 2.86)



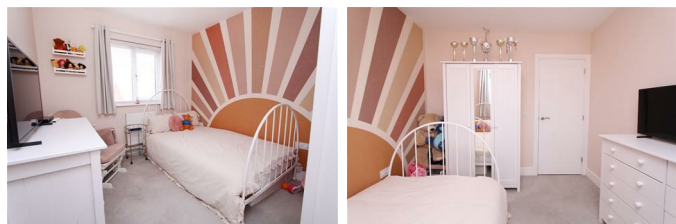
The master bedroom comes with double fitted wardrobe with sliding doors and leads to the ensuite shower room.

Ensuite Shower Room 5'10" x 6'3" (1.80 x 1.92)



A shower cubicle, low level W/C and wash hand basin.

Bedroom Two 10'3" x 8'11" (3.13 x 2.74)



With window to the rear elevation.

Bedroom Three 11'3" x 6'3" (3.44 x 1.92)



With window to the rear elevation.

Family Bathroom 5'6" x 6'1" (1.70 x 1.87)

Comprises of bath with shower over, wash hand basin and low level W/C.

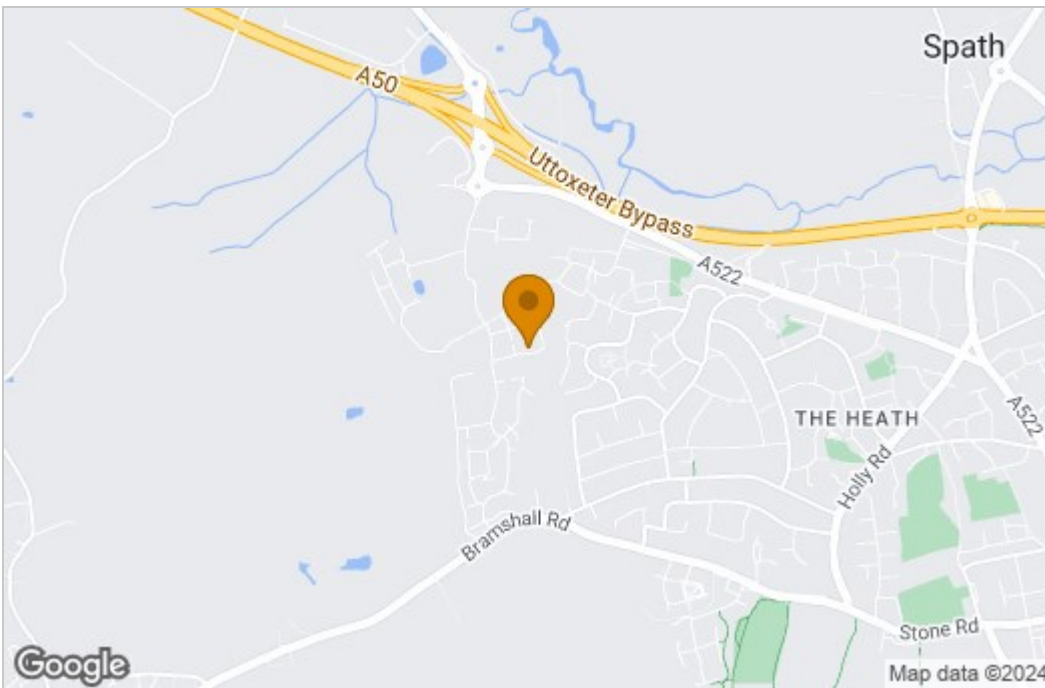
Floor Plan



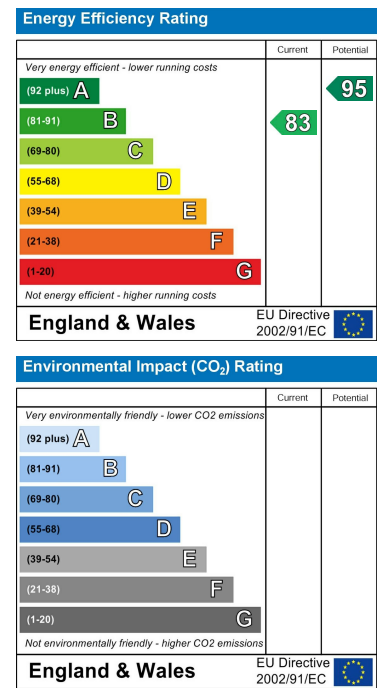
Total floor area 91.1 m² (980 sq.ft.) approx

This plan is for illustration purposes only and may not be representative of the property. Plan not to scale. Powered by PropertyBox

Area Map



Energy Efficiency Graph



These particulars, whilst believed to be accurate are set out as a general outline only for guidance and do not constitute any part of an offer or contract. Intending purchasers should not rely on them as statements of representation of fact, but must satisfy themselves by inspection or otherwise as to their accuracy. No person in this firm's employment has the authority to make or give any representation or warranty in respect of the property.

Uttoxeter, East Staffordshire,
 Tel: +44 (0) 7956 591992 Email: jonathan.pearson@remax.co.uk