



# RE/MAX

## PROPERTY HUB



**51A Keats Avenue, Romford, RM3 7AU**

**Offers invited £650,000**

Your next home is now on the market!

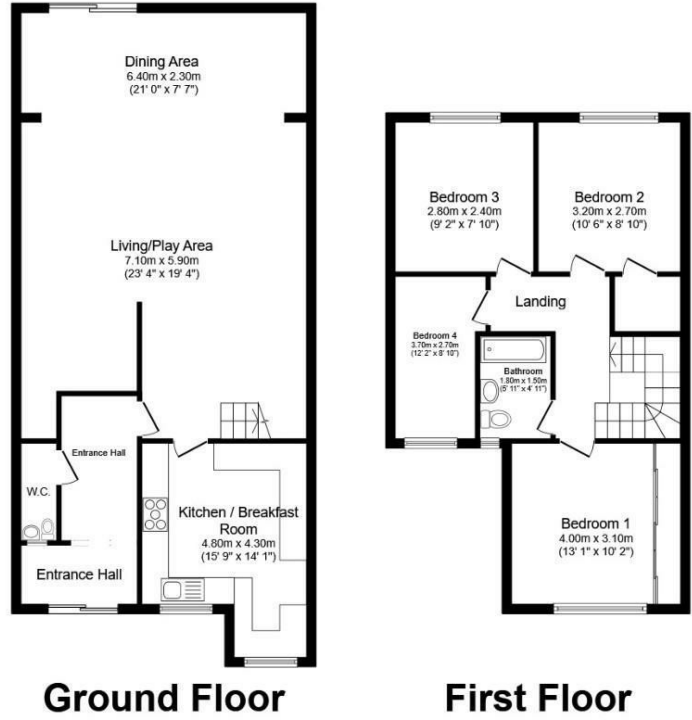
- Amazing size
- 4 double bedrooms
- Off-street parking for several cars
- Large rear garden
- Fully refurbished
- Living/ Dining/ Play area
- Chain Free and available immediately to move in

This four-bedroom semi-detached family home is looking for its new owners to enjoy it and create amazing memories, just as the current owners have.

On the ground floor, you will enter a very welcoming and spacious living room that can accommodate the daily needs of a family: from watching TV together, to dining or playing. The sliding doors are leading out to a



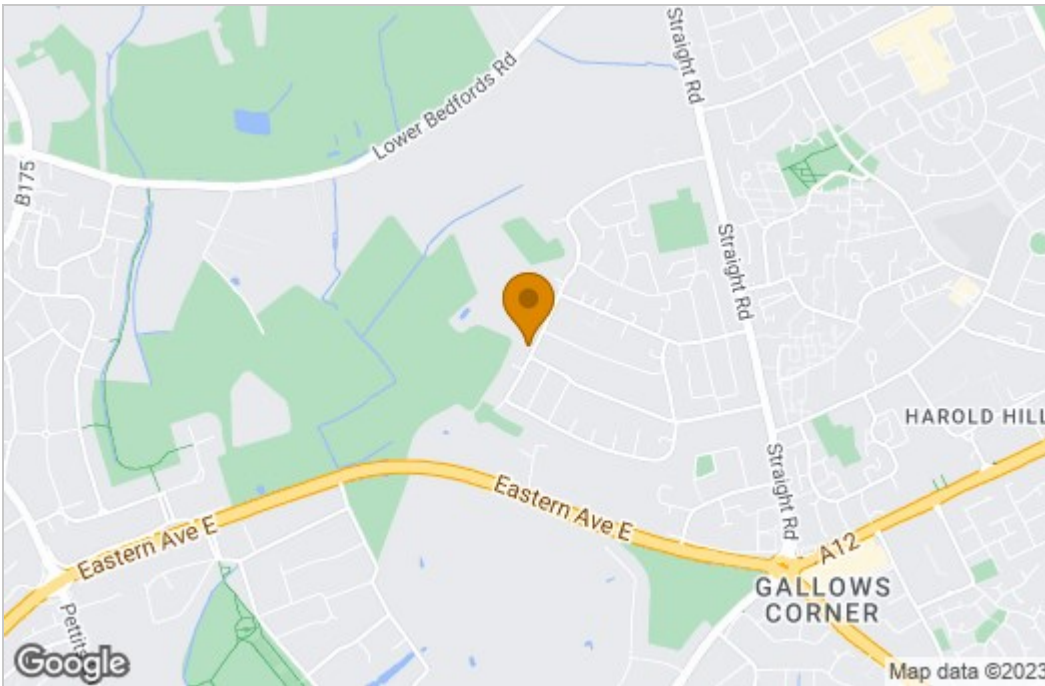
# Floor Plan



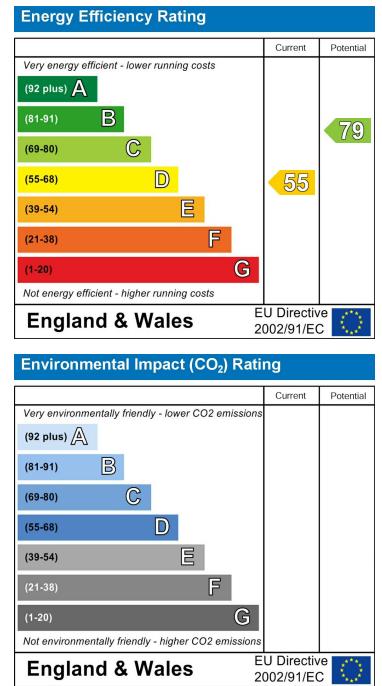
Total floor area 146.6 sq.m. (1,578 sq.ft.) approx

This floor plan is for illustrative purposes only. It is not drawn to scale. Any measurements, floor areas (including any total floor area), openings and orientation are approximate. No details are guaranteed, they cannot be relied upon for any purpose and they do not form part of any agreement. No liability is taken for any error, omission or misstatement. A party must rely upon its own inspection(s). Powered by www.focalagent.com

# Area Map



# Energy Efficiency Graph



These particulars, whilst believed to be accurate are set out as a general outline only for guidance and do not constitute any part of an offer or contract. Intending purchasers should not rely on them as statements of representation of fact, but must satisfy themselves by inspection or otherwise as to their accuracy. No person in this firm's employment has the authority to make or give any representation or warranty in respect of the property.

10 King Street, Wolverhampton, West Midlands, WV1 1ST  
 Tel: +44 (0) 7853 444706 Email: lavinia.balan@remax.co.uk remax.co.uk