



RE/MAX

PROPERTY HUB



2a Grace Road, Leicester, LE9 4JX

£335,000

RE/MAX are delighted to offer this extended three bedroom detached bungalow situated in the sought after village of Sapcote offering ample living space throughout.

As you enter the bungalow, you are welcomed into a spacious hallway, leading to a lounge with a separate dining area, perfect for entertaining guests or enjoying a family meal. The lounge area benefits from large windows, providing plenty of natural light and a cosy atmosphere.

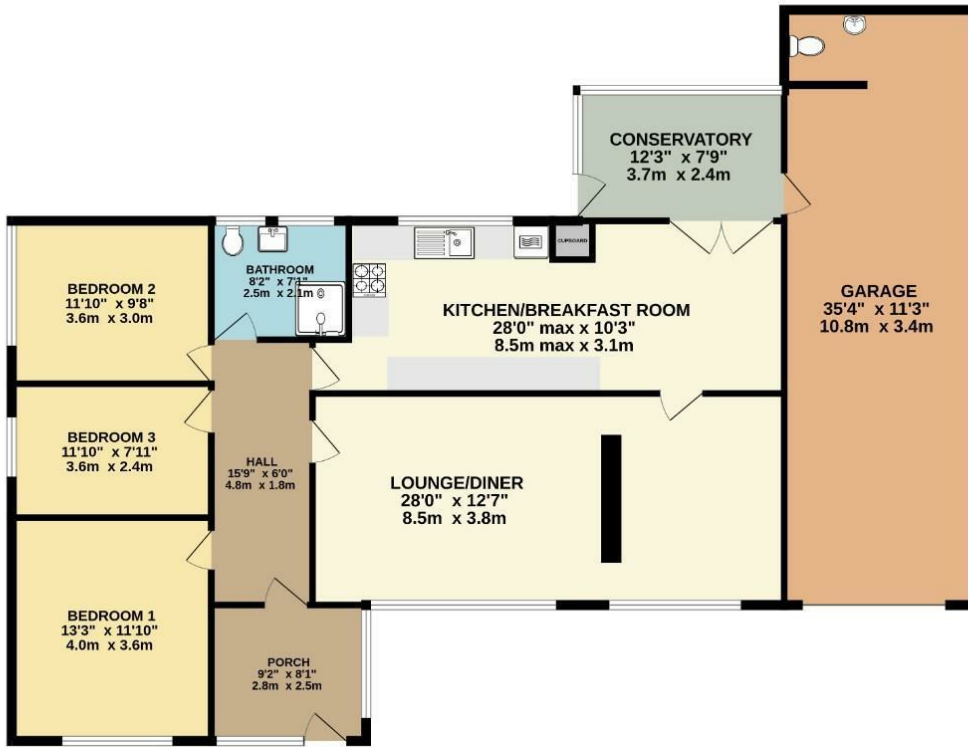
The kitchen/breakfast room is well-equipped and provides plenty of storage space for all your cooking needs. The kitchen also benefits from a breakfast area that leads to the conservatory which provides an additional living space, perfect for relaxation or socialising with family and friends.

The bungalow features three double bedrooms, all of which are generously sized with the master bedroom having built in over bed storage and wardrobes. The bedrooms are serviced by a modern shower room.

The property also benefits from having a BRAND NEW BOILER, double tandem garage, driveway and land to three sides with gardens to front and side, mainly laid to lawn and a low maintenance rear courtyard.

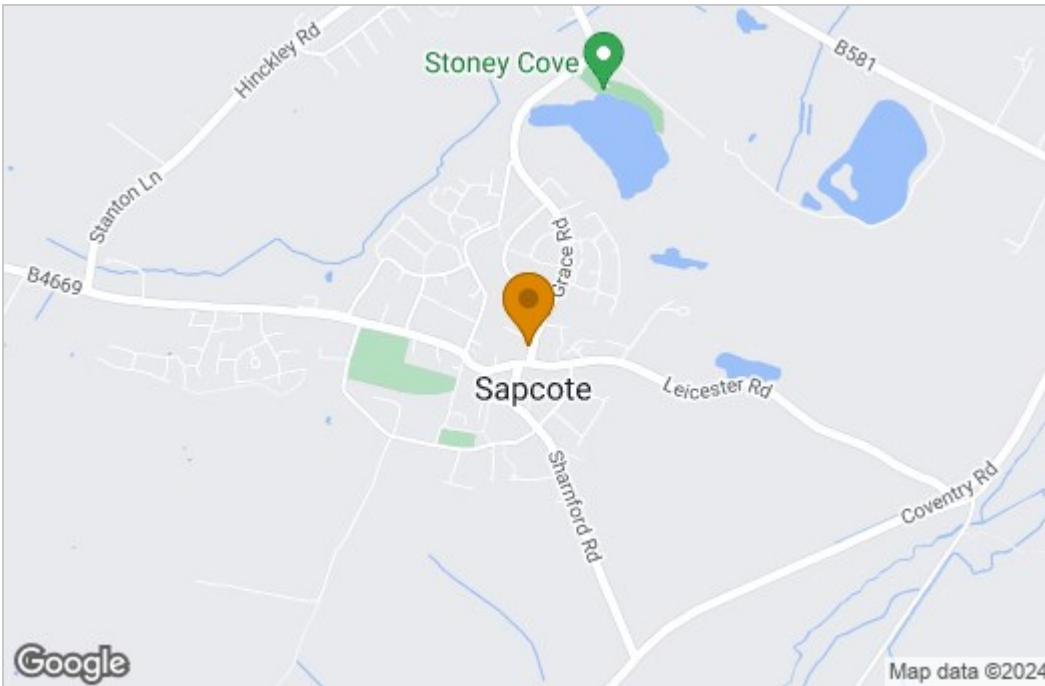
Floor Plan

GROUND FLOOR

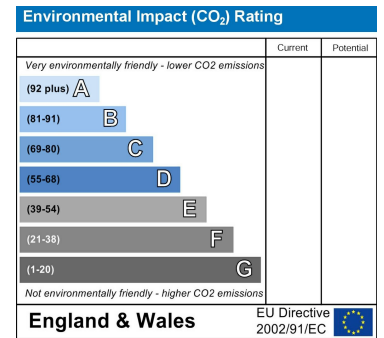
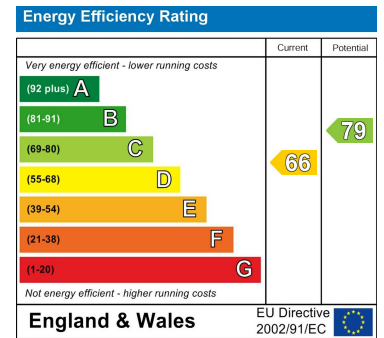


Whilst every attempt has been made to ensure the accuracy of the floorplan contained here, measurements of doors, windows, rooms and any other items are approximate and no responsibility is taken for any error, omission or mis-statement. This plan is for illustrative purposes only and should be used as such by any prospective purchaser. The services, systems and appliances shown have not been tested and no guarantee as to their operability or efficiency can be given.
Made with Metropix ©2022

Area Map



Energy Efficiency Graph



These particulars, whilst believed to be accurate are set out as a general outline only for guidance and do not constitute any part of an offer or contract. Intending purchasers should not rely on them as statements of representation of fact, but must satisfy themselves by inspection or otherwise as to their accuracy. No person in this firm's employment has the authority to make or give any representation or warranty in respect of the property.

Birmingham, West Midlands, B15 1TR

Tel: 07538 376000 Email: wasim.nadeem@remax.uk <https://remax.uk/associates/Wasim%20Nadeem>