



Plot 4, Cannop Meadows, Bents

Fixed Price £415,000



# Plot 4, Cannop Meadows

## Bents

Bridges Properties are proud to present Phase Three of the exceptional Cannop Meadows development – a rare opportunity to secure a luxury five-bedroom detached home in a truly idyllic setting.

Introducing *The Hawthorn* – an outstanding five-bedroom property with a single garage, thoughtfully designed to offer the perfect balance of style, space, and sophistication. From the generous proportions to the high-quality finishes throughout, this remarkable home is ideal for modern family living.

Cannop Meadows is an exclusive collection of just 16 homes, tucked away in a peaceful, semi-rural location that offers both tranquillity and excellent connectivity. This sought-after development combines scenic surroundings with convenience, creating the perfect setting for your next chapter.

Step inside *The Hawthorn* and experience a home where thoughtful design meets effortless style. A grand entrance hall welcomes you, setting the tone for the spacious and beautifully considered layout that lies beyond.

The ground floor features a generous lounge, perfect for both relaxing and entertaining. Just off the lounge, a versatile Study/Bedroom 5 offers flexibility to suit your lifestyle – whether that's a home office, guest room, or additional living space. To the rear, the stylish open-plan Kitchen/Dining area opens directly onto the garden, creating a seamless flow between indoor and outdoor living.

Upstairs, you'll find four well-proportioned bedrooms, each benefiting from excellent fitted wardrobe space. Additional hallway storage ensures every inch of the home is as practical as it is elegant.

The luxurious main bedroom enjoys the privacy of its own en-suite, while a beautifully finished family bathroom and a downstairs WC cater to the needs of a busy household.

Adding to its appeal, *The Hawthorn* boasts an integral garage for secure parking and everyday convenience, along with generous gardens to the front and rear, offering the perfect spaces to unwind and enjoy outdoor life.

*The Hawthorn* effortlessly combines modern design with everyday functionality, creating a truly special place to call home.

**Estimated completion: October 2025**

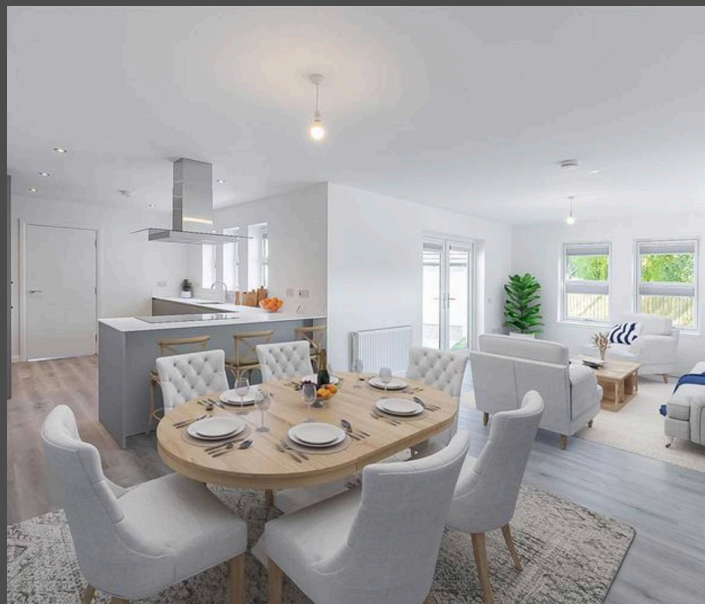
*\* Please note: Images shown are of the show home and different house style. They are used for illustrative purposes only. \**

Council Tax band: TBD

Tenure: Freehold

- Exclusive Development of Luxury Five Bedroom Detached Homes
- **BRIDGES** The Hawthorn - Spanning an Impressive 1965 Sq Ft.
- Custom High Quality Finishes

















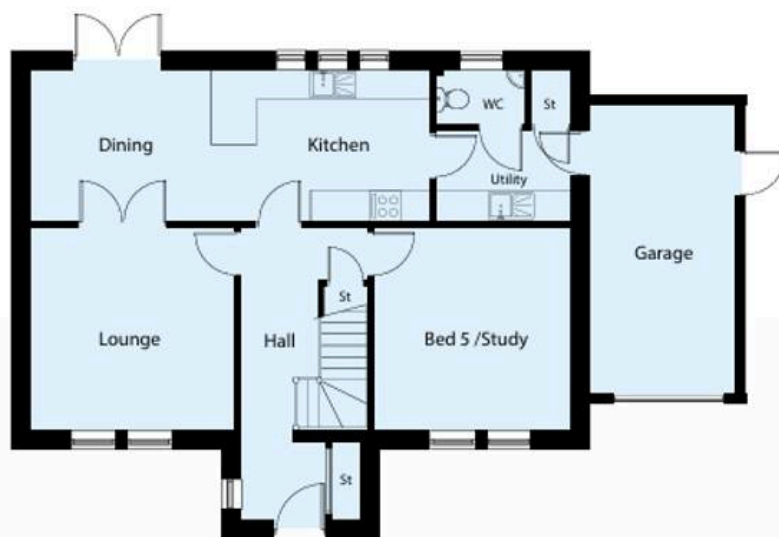


#### Ground Floor Dimensions

Lounge	4.14m x 4.18m
Study/Bed 5	4.14m x 4.02m
Kitchen/Dining	7.96m x 3.12m
Utility	2.90m x 1.82m
WC	2.00m x 1.20m

#### First Floor Dimensions

Bedroom 1	3.63m x 3.88m
Bedroom 2	3.63m x 3.88m
Bedroom 3	3.63m x 4.02m
Bedroom 4	3.63m x 4.02m
Bathroom	2.80m x 2.44m
En-suite	1.70m x 2.44m







## Bridges Properties

15 Shairps Business Park, Livingston - EH54 5FD

01501519435

[info@bridges-properties.co.uk](mailto:info@bridges-properties.co.uk)

[www.bridges-properties.co.uk/](http://www.bridges-properties.co.uk/)

