



11 McLaughlan View, Harthill

Harthill

Offers Over £425,000

11 McLaughlan View

Harthill, Harthill

Welcome to this exceptional seven-bedroom detached home, originally built in 2014 and thoughtfully upgraded by the current owners with their extensive renovations. Nestled on a generous plot, this impressive property offers a perfect combination of modern luxury and family-friendly functionality. Boasting a large driveway, a detached garage, and beautifully landscaped gardens, this home provides a private sanctuary with stunning tree-top views from its elevated balcony.

As you step inside, you are greeted by a breath-taking open-plan kitchen, dining, and living area—a true centrepiece of the home. The sleek, contemporary kitchen is designed to inspire culinary creativity, featuring a large island complete with a built-in wine cooler.

The layout flows seamlessly into a spacious dining area and lounge, offering an inviting space for both family living and entertaining. The room is bathed in natural light thanks to the large French doors that open onto a wide balcony, providing uninterrupted views of the rear garden and the surrounding greenery—an ideal spot for morning coffee or evening relaxation. The ground floor also houses a practical utility room, providing essential storage space and direct access to the kitchen, streamlining the day-to-day chores of family life.

The home is thoughtfully laid out across three floors, with seven generously sized bedrooms offering an abundance of space for family and guests. The principal bedroom is a private sanctuary, designed with luxurious comfort in mind. The en-suite bathroom is nothing short of spectacular, fully tiled from floor to ceiling and equipped with his-and-her wall-hung sink units, a freestanding bathtub, a walk-in shower, and accented with opulent gold fixtures. It's a space that exudes tranquillity and high-end design.



Each of the four bathrooms in the home has been carefully curated to offer a sense of indulgence.

The family bathroom is sophisticated in its neutral palette, boasting a rainfall shower and elegant gold accents, creating a spa-like atmosphere.

On the ground floor, the stylish shower room is finished with half-height tiling, a wall-hung sink unit with storage, a heated towel rail, and refined black accents, delivering a chic modern look.

The lower-level shower room is equally impressive, featuring full tiling, a heated towel rail, and striking black finishes for a contemporary feel.

There is also a utility on the lower ground floor providing direct access to the garden.

The ground floor also houses a practical utility room, providing essential storage space and direct access to the kitchen, streamlining the day-to-day chores of family life.

A well-sized bedroom on this level adds versatility, perfect for use as a guest room, home office, or playroom.

Descending to the lower level, you'll find additional bedrooms and flexible living spaces, including a spacious sixth bedroom which could easily serve as a gym, hobby room, or media space, along with a generously proportioned seventh bedroom. This floor also includes a sleek shower room, offering comfort and convenience for family members or guests staying on this level.



Externally, the home continues to impress with its beautifully designed rear garden, offering a harmonious balance between outdoor entertainment and relaxation. A large patio provides ample space for outdoor dining or lounging, while the extensive lawn offers a secure and fun environment for children or pets to enjoy.

The front of the property features a wide driveway that can accommodate multiple vehicles, and a large detached garage provides additional storage or parking.

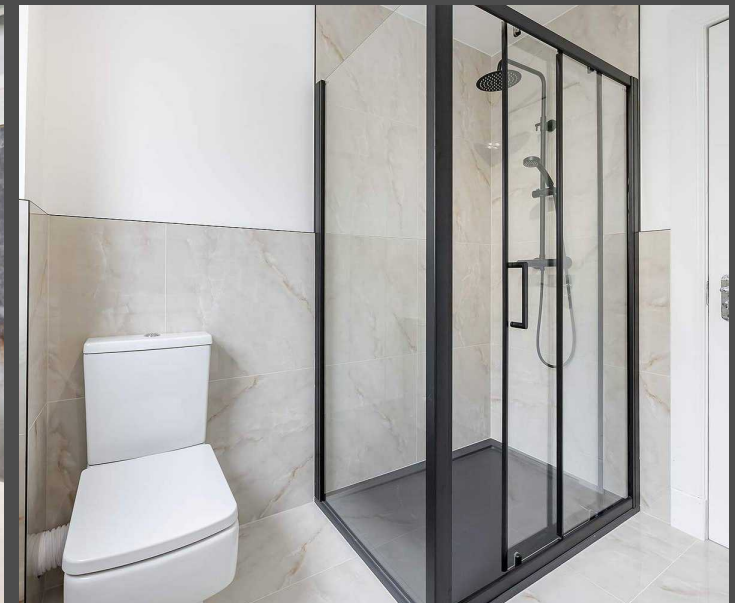
This home is a unique blend of luxury, practicality, and elegant design. Every detail has been considered, from the high-quality finishes throughout to the thoughtfully planned layout, ensuring comfort and style for modern family living.

With its expansive spaces, high-end features, and tranquil outdoor areas, this property is sure to impress anyone who steps through its doors.

Don't miss the opportunity to view this one-of-a-kind residence, where every corner offers a touch of luxury, and every space has been designed for the ultimate in modern living.

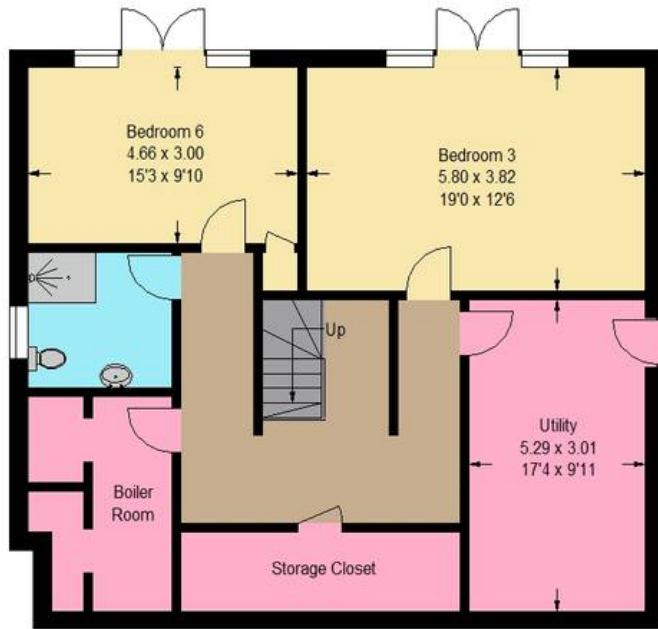


- Renovated with Remarkable Attention to Detail
- Landscaped Wrap Around Gardens
- Expansive Driveway & Large Detached Garage
- Four Shower/Bathrooms Across Three Levels
- Spacious Open Plan Kitchen/Dining/Living
- Balcony

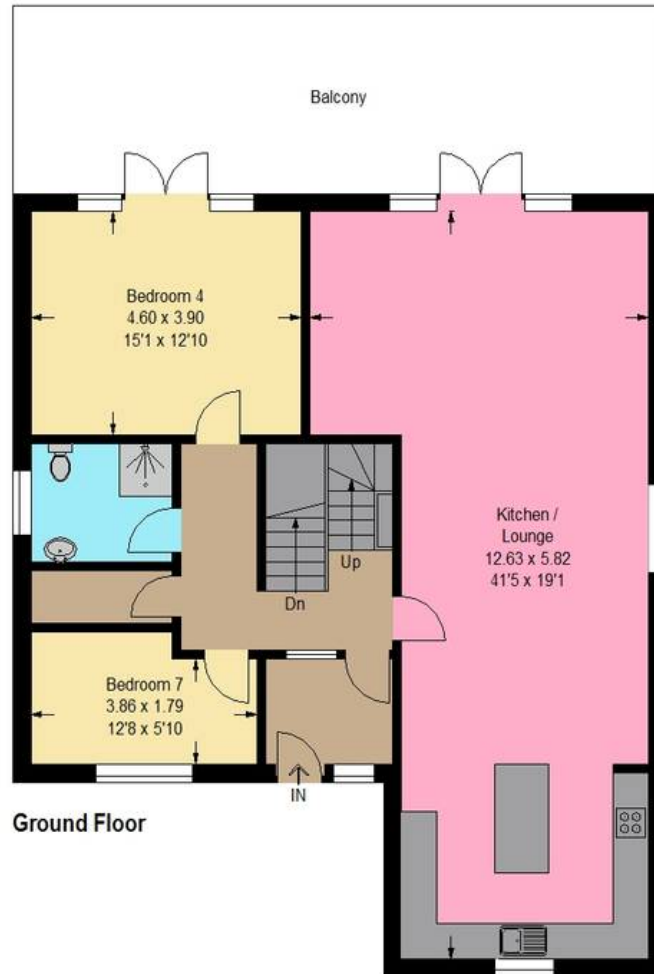




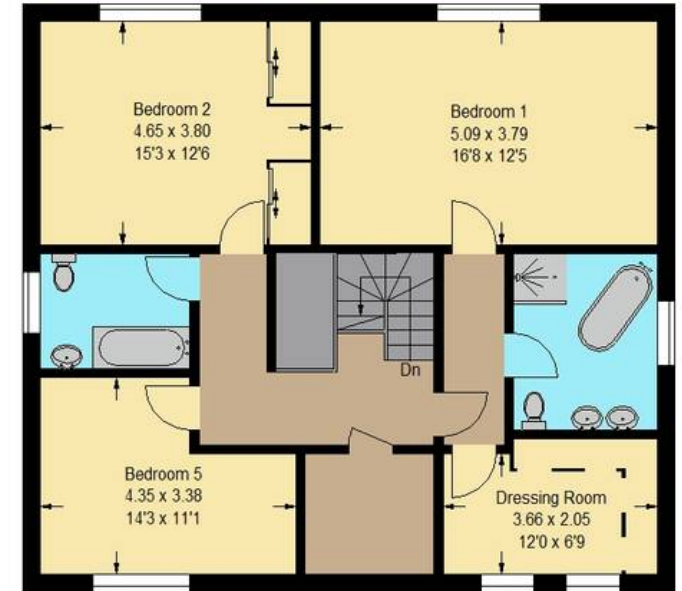
Approximate Gross Internal Area = 309.4 sq m / 3330 sq ft



Basement



Ground Floor



First Floor

Illustration For Identification Purposes Only. Not To Scale (ID1121714 / Ref:89165)



Bridges Properties

94 West Main Street, Whitburn - EH47 0QU

01501519435

info@bridges-properties.co.uk

www.bridges-properties.co.uk/

