



558 Leyland Road, Bathgate

Bathgate

Offers Over **£135,000**



## 558 Leyland Road

Bathgate, Bathgate

Located in the highly sought-after Wester Inch development in Bathgate, this modern, two-bedroom apartment offers a blank canvas, perfect for first-time buyers or those looking to downsize. With move-in ready condition, it provides an excellent opportunity to customise and make your own.

This property features a spacious lounge with ample room for both relaxing and dining, making it a perfect spot for entertaining or family gatherings.

The well-equipped kitchen includes integrated appliances such as oven, gas hob & fridge freezer, generous counter space, and a large storage cupboard that could double as a pantry. The property also comes with a private residential carpark, adding to its convenience.



Both double bedrooms feature built-in wardrobes, offering ample storage. Bedroom one also benefits from an ensuite shower room, offering extra privacy and convenience.

The property's main bathroom is modern and bright, completing the comfortable living space with all the essentials for everyday living.

Situated within the catchment area for the top-rated Simpson Primary School, the location is ideal for families. Bathgate train station and Tesco Supermarket are just a short distance away, while nearby walking paths make it perfect for outdoor activities with kids or pets.





Approximate Gross Internal Area = 68.8 sq m / 741 sq ft

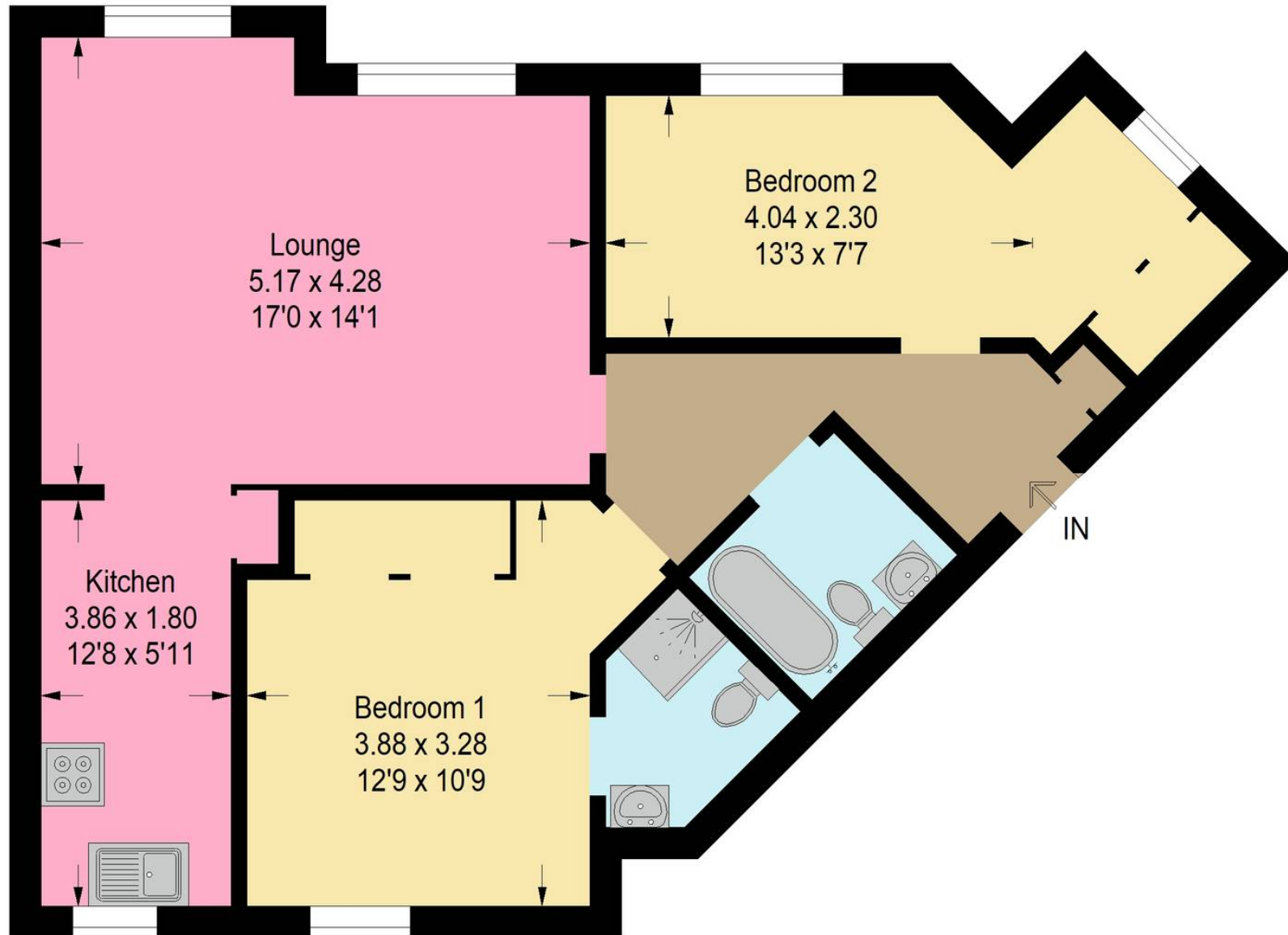


Illustration For Identification Purposes Only. Not To Scale (ID1126727 / Ref:89280)



## Bridges Properties

94 West Main Street, Whitburn - EH47 0QU

01501519435

[info@bridges-properties.co.uk](mailto:info@bridges-properties.co.uk)

[www.bridges-properties.co.uk/](http://www.bridges-properties.co.uk/)

