

B BRIDGES
PROPERTIES
Your Property. Our Priority
0202 52426 | [bridgesproperties.co.uk](https://www.bridgesproperties.co.uk)
[bridgesproperties](https://www.facebook.com/bridgesproperties) | [bridgesproperties](https://www.instagram.com/bridgesproperties)
FOR SALE

105 Russell Place, Bathgate

Bathgate

Offers Over **£160,000**



105 Russell Place

Bathgate, Bathgate

Introducing a lovely two-bedroom mid-terraced home, situated in the desirable Russell Drive of the Wester Inch development in Bathgate. This property is in immaculate, walk-in condition and is chain-free, providing a straightforward moving process. Perfect for first-time buyers and families alike, this home offers a fantastic opportunity to settle into a vibrant community with ease and comfort.

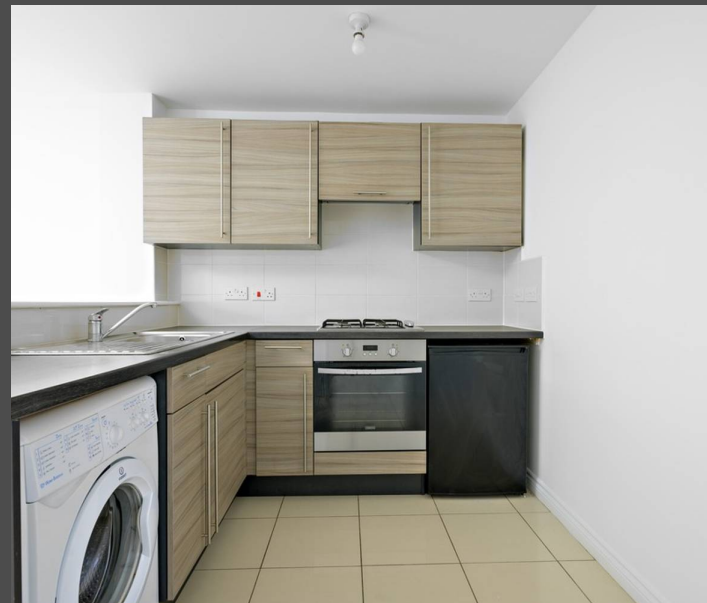
As you step inside, you're welcomed by a bright entrance hall leading to a spacious open-plan lounge and kitchen area, perfect for both relaxing and entertaining. French doors in the open-plan area lead out to the rear garden, enhancing the living space and providing a seamless transition to outdoor entertaining. Completing the ground floor is a convenient W/C, adding to the practicality of everyday living.

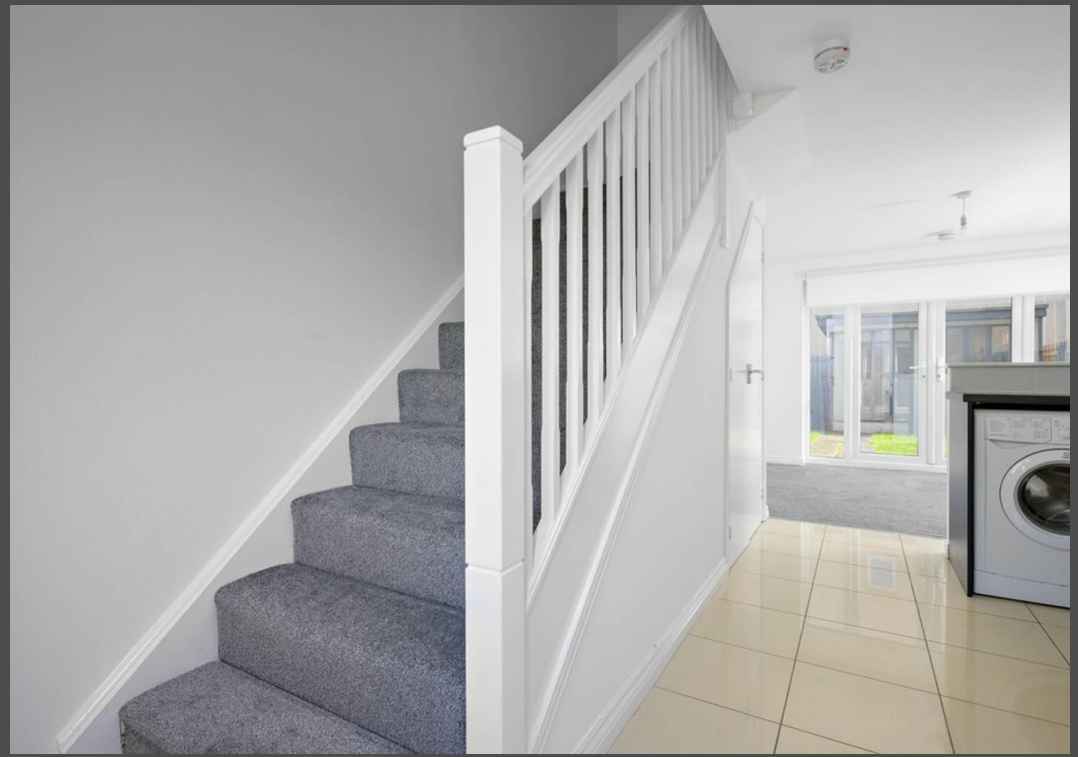


Upstairs, you'll find two well-proportioned bedrooms, each offering comfortable space for rest and relaxation. Both bedrooms feature built-in storage, maximizing space and organization. The master bedroom provides a peaceful retreat, while the second bedroom is versatile, ideal for guests, a home office, or a child's room. A stylish bathroom on this floor serves both bedrooms.

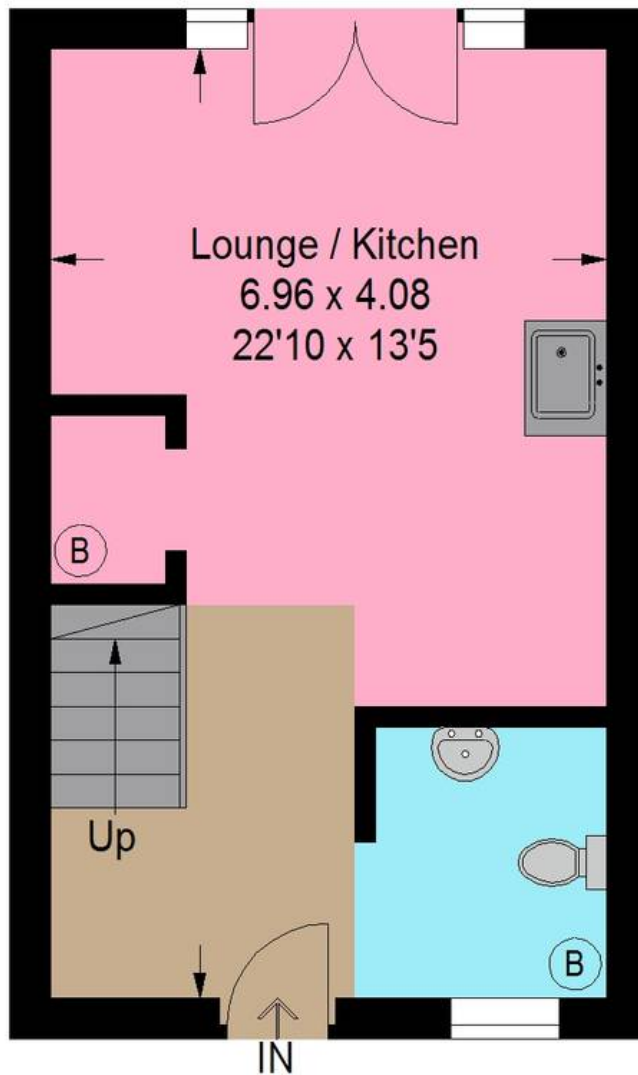
Outside, the rear garden is beautifully landscaped and features a garden room, perfect for additional storage, a home office, or a hobby space. Additionally, the property comes with an allocated parking space, ensuring convenience and ease for homeowners and guests alike.

Designed with modern living in mind, this home offers well-utilized spaces and contemporary conveniences. Its layout suits young professionals, small families, or anyone looking for a comfortable and attractive living environment.

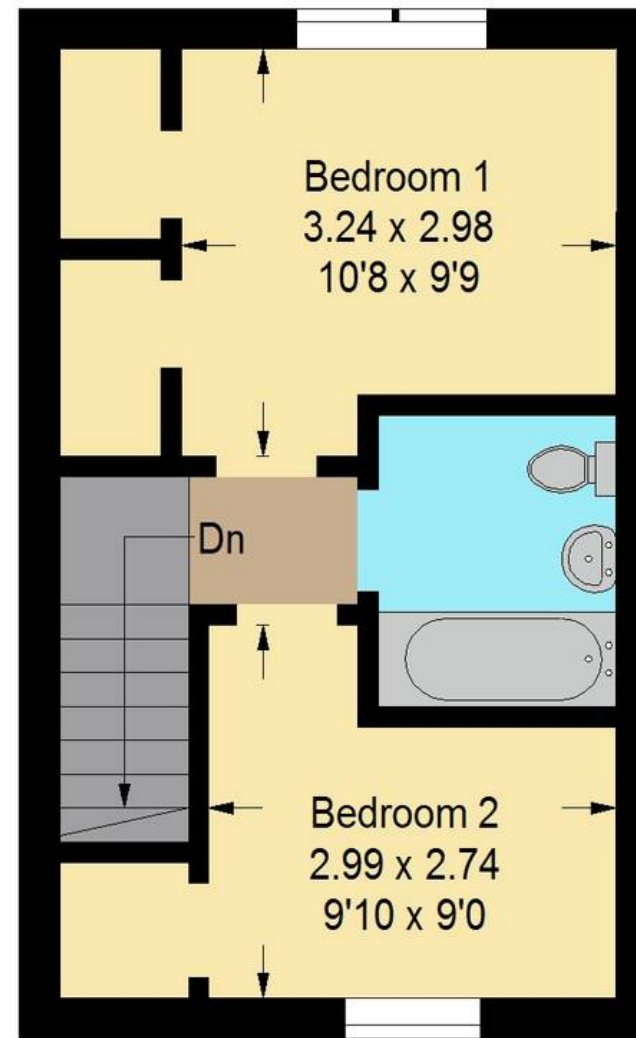




Approximate Gross Internal Area = 57.9 sq m / 623 sq ft



Ground Floor



First Floor

Illustration For Identification Purposes Only. Not To Scale (ID:1119537 / Ref:89093)



Bridges Properties

94 West Main Street, Whitburn - EH47 0QU

01501519435

info@bridges-properties.co.uk

www.bridges-properties.co.uk/

