



B BRIDGES
PROPERTIES
Your Property. Our Priority

FOR SALE

48 Station Road, Armadale

Bathgate

Offers Over £175,000



48 Station Road

Armadale, Bathgate

Nestled in a highly sought-after area, Station Road is a lovely two bedroom mid- terraced home, built in 2017 by Taylor Wimpey, and offers features such as a spacious living areas and a south-facing garden.

As you enter, you'll find an entrance hallway that leads to the kitchen, lounge, and staircase. The kitchen features ample base and wall mounted units and worktop space, along with integrated appliances such as a fridge freezer, dishwasher, and washing machine. The lounge is a spacious room that can also accommodate dining, and boasts French doors leading out to the lovely south-facing rear garden.

Completing the ground floor is a convenient WC



Moving upstairs, you'll find two double bedrooms, with the main bedroom being generous in size and boasts fitted wardrobes.

The three-piece bathroom is finished with full-height tiling and a shower over the bath.

Outside, the rear garden is a sought-after south-facing orientation, with a slabbed patio area and a well-maintained lawn. The property also offers off-street parking with an allocated parking space.

The current owners have taken great care of the property, which is shown in its immaculate presentation and is ready for its new owners.

Council Tax band: D

Tenure: Freehold





Approximate Gross Internal Area
65.7 sq m / 707 sq ft

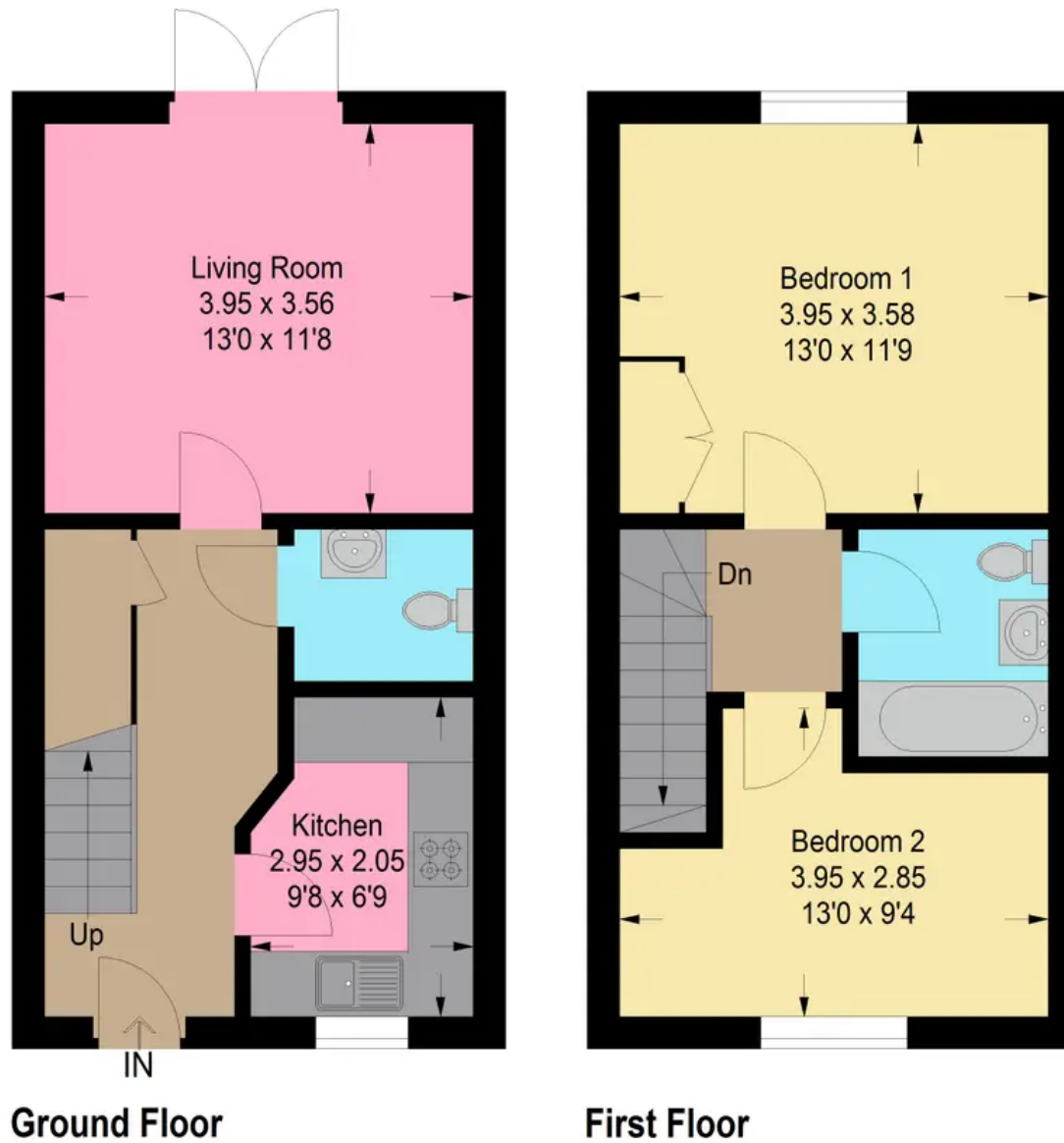


Illustration For Identification Purposes Only.
Not To Scale (ID:1056747 / Ref:87362)



Bridges Properties

94 West Main Street, Whitburn - EH47 0QU

01501519435

info@bridges-properties.co.uk

www.bridges-properties.co.uk/

