



11 Netherton Grove, Whitburn

Offers Over £290,000



11 Netherton Grove

Welcome to this hidden gem nestled at the bottom of a tranquil cul-de-sac in the heart of Whitburn. Boasting instant curb appeal, this charming three-bedroom detached bungalow offers a perfect blend of comfort, style, and practicality.

Upon arrival, you'll be greeted by a beautifully manicured front garden, a double driveway, and a double garage, setting the tone for the elegance within. Step through the bright hallway and into the inviting open-plan lounge/dining area, flooded with natural light from large windows to the front and French doors to the rear.

The heart of the home lies in the contemporarily styled breakfasting kitchen, featuring a convenient breakfast bar for casual dining and seamless access to the rear garden. The thoughtful conversion of the previous ensuite and main bathroom into a luxurious en-suite jack and jill bathroom between the hallway and bedroom 1 adds a touch of sophistication and convenience.

All three double bedrooms offer ample space for relaxation, with two benefiting from fitted storage, ensuring clutter-free living. Outside, the rear garden beckons as a private sanctuary, fully enclosed for peace of mind and equipped with a brick-built BBQ and a fire pit, perfect for entertaining or unwinding in the evenings.





Approximate Gross Internal Area = 91.2 sq m / 982 sq ft
Garage / Store = 40.4 sq m / 435 sq ft
Total = 131.6 sq m / 1417 sq ft

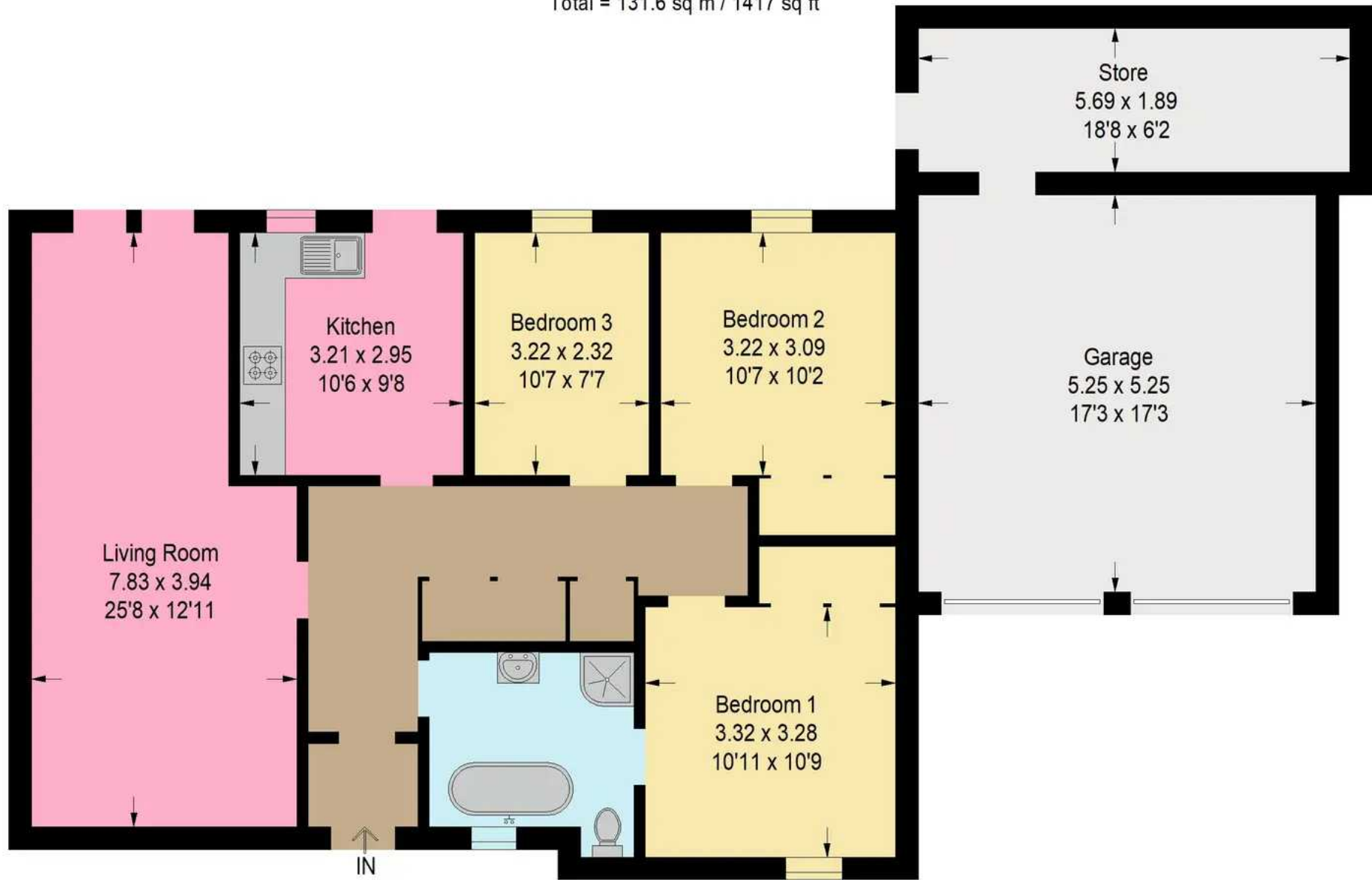


Illustration For Identification Purposes Only. Not To Scale (ID:1072853 / Ref:87791)



Bridges Properties

94 West Main Street, Whitburn - EH47 0QU

01501519435

info@bridges-properties.co.uk

www.bridges-properties.co.uk/

