



Plot 21 Heatherview, Seafield

Seafield

Fixed Price £420,995

Plot 21 Heatherview

Introducing the 'Turnberry' by Atholl Homes, a remarkable 5-bedroom detached property nestled within the esteemed Heatherview development in Seafeld, proudly presented by Bridges Properties. Get ready to be impressed by this exceptional residence, thoughtfully crafted to offer unmatched comfort and elegance.

As you step into this exquisite new build, you'll be immediately captivated by the impeccable design that radiates unparalleled quality and craftsmanship. The ground floor welcomes you with an inviting and spacious lounge, perfect for unwinding and creating lasting memories with loved ones. The large open plan kitchen/dining room sets the stage for culinary delights and treasured family gatherings, while the thoughtfully placed utility room and w/c add convenience and practicality to daily living.

The kitchen itself boasts a bright and modern ambiance, and in addition to the integrated appliances, it also features a stylish peninsula, offering a perfect spot for enjoying breakfast or casual meals with the family.

The dining area, which seamlessly flows from the kitchen, is a versatile space that can also be used as a family room, providing an additional living space to suit your family's needs. This cleverly designed layout allows for a natural integration of everyday living and entertaining, making it a truly functional and dynamic hub of the home.

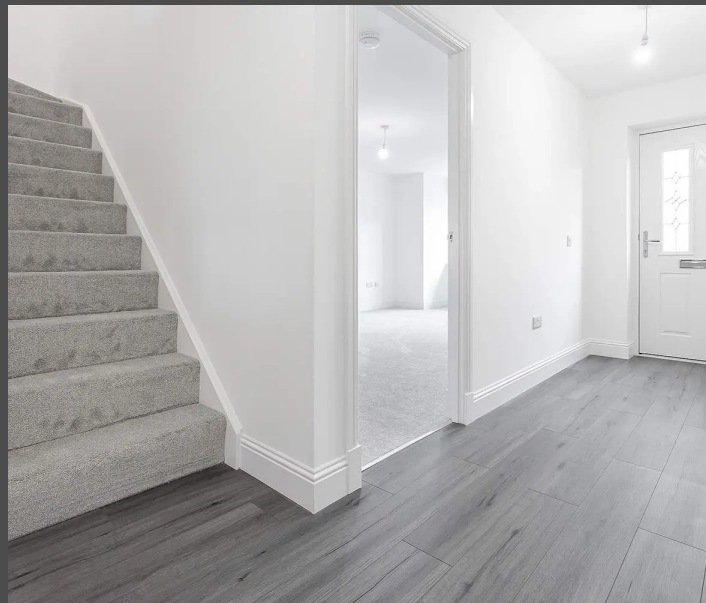
Upstairs, you'll find a collection of five generously proportioned bedrooms, each meticulously crafted to cater to your family's utmost comfort and convenience. The principal bedroom and second bedroom are elegantly appointed with ensuite shower rooms, providing luxurious and private sanctuaries for relaxation and ease. Completing the upper floor is the main bathroom, an artfully designed space that seamlessly blends contemporary elegance with practical functionality.

Atholl Homes takes pride in offering most of the usual 'optional extras' as standard, ensuring your new home is move-in ready with all the essential finishing touches. From the flooring to the kitchen and bathrooms, every detail is considered to make your house a home. The builder's focus on customisation means you'll have plentiful options for bathrooms and kitchen finishes, allowing you to create a personalised space that perfectly aligns with your preferences.



In this new development, the 'Turnberry' showcases the finest in modern construction, emphasising quality build and modern features throughout. With an unwavering commitment to creating homes that meet clients' specific requirements, Atholl Homes ensures each house is tailored to suit your lifestyle and desires.

Heatherview in Seafield is an emerging community offering the best of modern living and convenience. Embrace the opportunity to be part of this vibrant development, where a well-crafted home is complemented by the promise of a thriving neighbourhood and access to nearby amenities.



Welcome to Heatherview Phase 2, brought to you by reputable builders Atholl Homes. Situated to the west of Livingston, this thriving community blends contemporary living with nature's beauty. Enjoy excellent transport links, essential amenities, and a charming tight-knit community in Seafield. Heatherview offers an enviable location, bordered by a football park and a scenic cycle path, surrounded by miles of captivating woodland. Atholl Homes' craftsmanship ensures modern comforts and a seamless blend with nature.

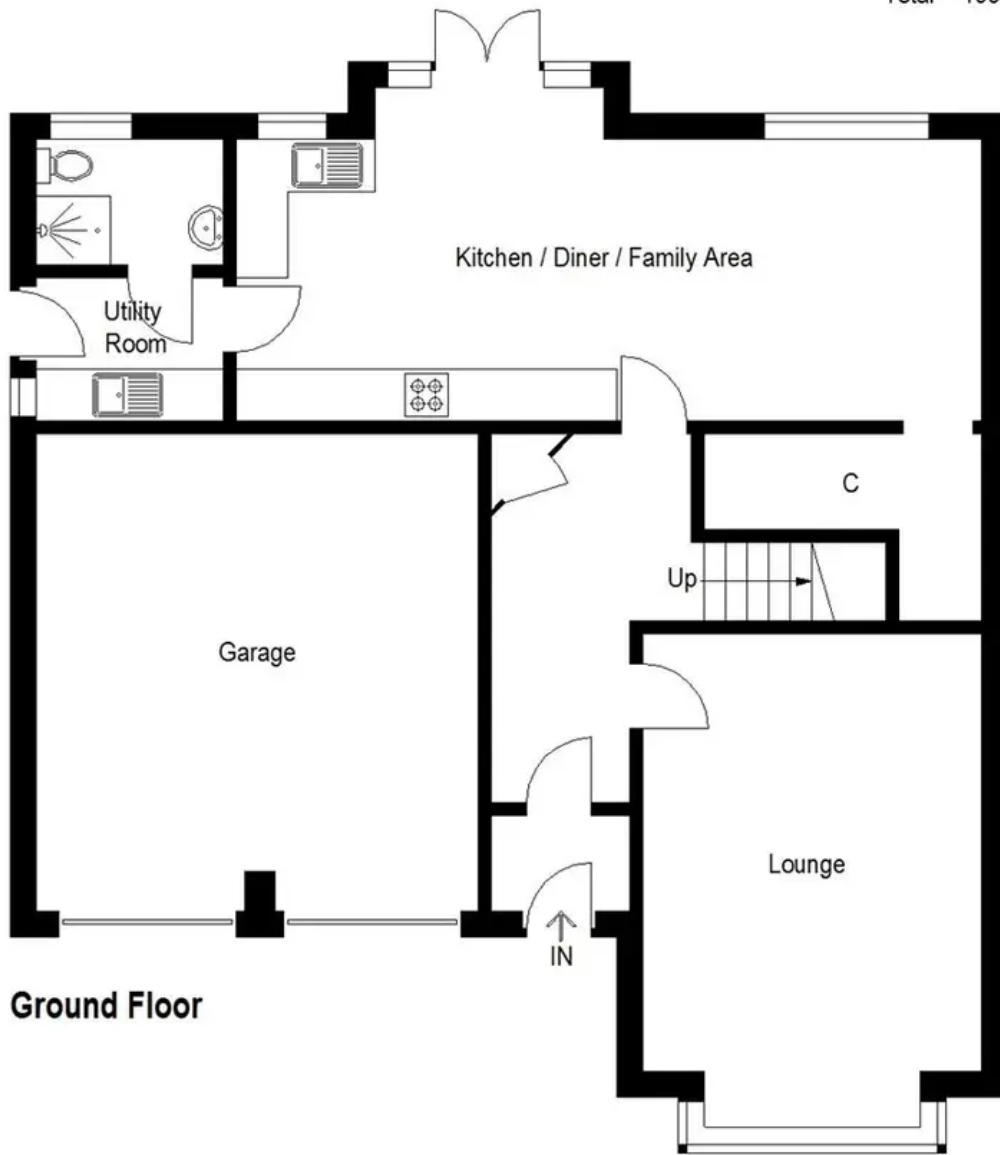


- 2 Plots Available
- Great Location - Cycle Path, Walks and Woodland Nearby
- Open Plan Kitchen/Dining Room
- Reserve Your Dream Home Today
- Close To Livingston With Great Commuter Links
- Heatherview Development in Seafield
- Main Bathroom, 2 Ensuites & W/C
- 5 Bedroom Detached
- High Quality, Bespoke Homes
- Double Integral Garage

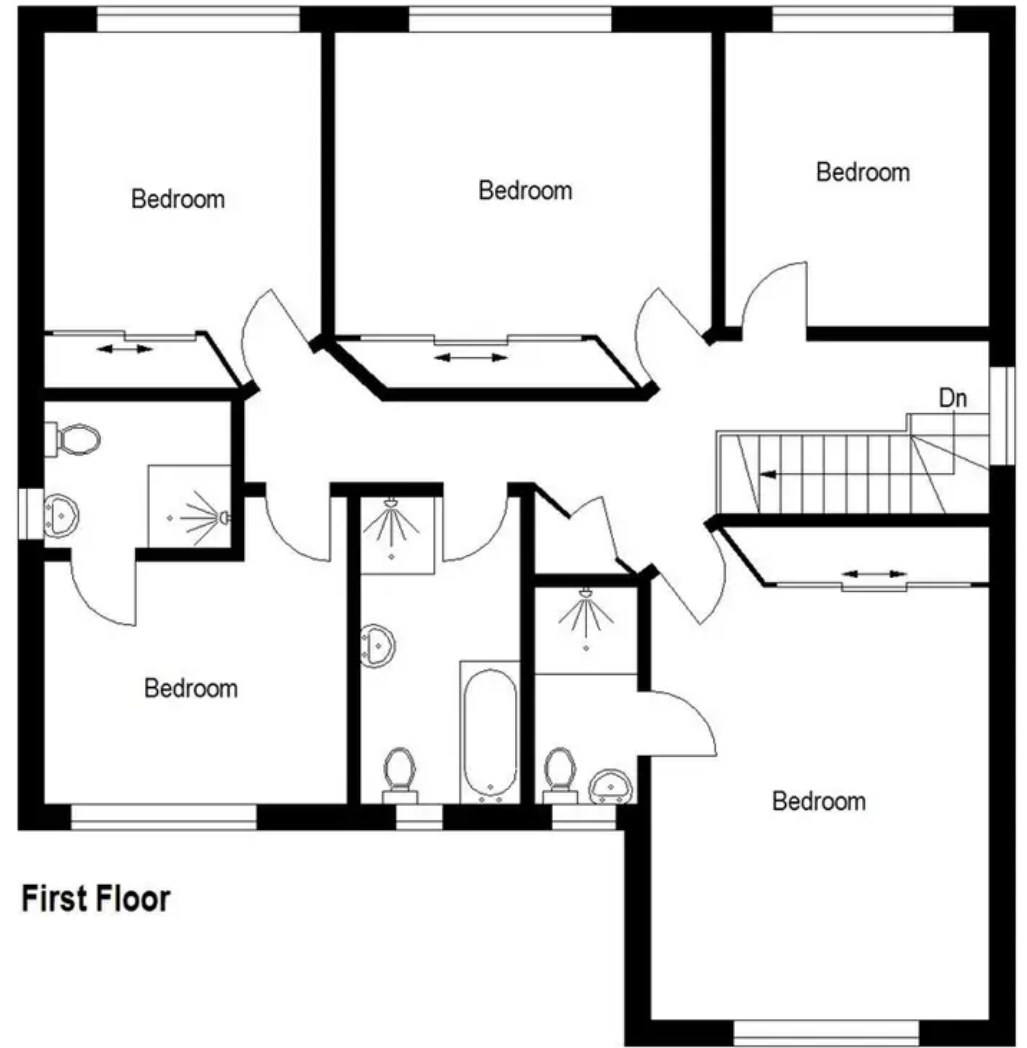




Approximate Gross Internal Area = 170.6 sq m / 1836 sq ft
Garage = 28.5 sq m / 307 sq ft
Total = 199.1 sq m / 2143 sq ft



Ground Floor



First Floor

Illustration For Identification Purposes Only. Not To Scale (ID:991206 / Ref:85578)



Bridges Properties

94 West Main Street, Whitburn - EH47 0QU

01501519435

info@bridges-properties.co.uk

www.bridges-properties.co.uk/

