



The Rose

2 bedroom home

bovishomes.co.uk

**Bovis
Homes** 

The Rose

2 bedroom home

Ground floor	metres	feet / inches
Kitchen / dining area	4.52 x 2.48	14' 10" x 8' 2"
Sitting room	3.73 x 3.50	12' 3" x 11' 6"

First floor

Bedroom 1	4.52 x 2.79	14' 10" x 9' 2"
Bedroom 2	4.52 x 2.60	14' 10" x 8' 7"

The Rose | M205 01 NBEAC |

This floorplan has been produced for illustrative purposes only. Room sizes shown are between arrow points as indicated on plan. The dimensions have tolerances of + or -50mm and should not be used other than for general guidance. If specific dimensions are required, enquiries should be made to the sales consultant.

ovn	oven	ffzs	fridge freezer space
h	hob	cup'd	cupboard
ds	dishwasher space	◀ ▶	measuring points
ws	washing machine space		

Please refer to the sales consultant for specific plot details as the illustrations shown are computer generated impressions of how the property may look so are indicative only. External details or finishes may vary on individual plots and homes may be built in either detached or attached styles depending on the development layout. Exact specifications, window styles and whether a property is left or right handed may differ from plot to plot.

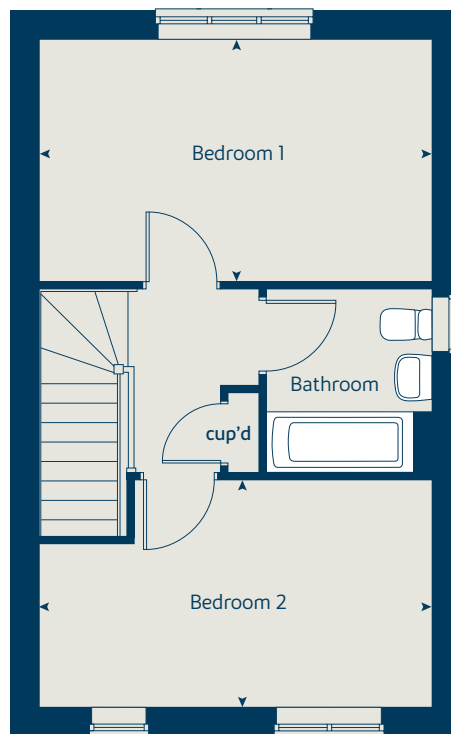
The floorplans shown are not to scale. Measurements are based on the original drawings. Slight variations may occur during construction.

Produced by the Vistry Group Design Studio.

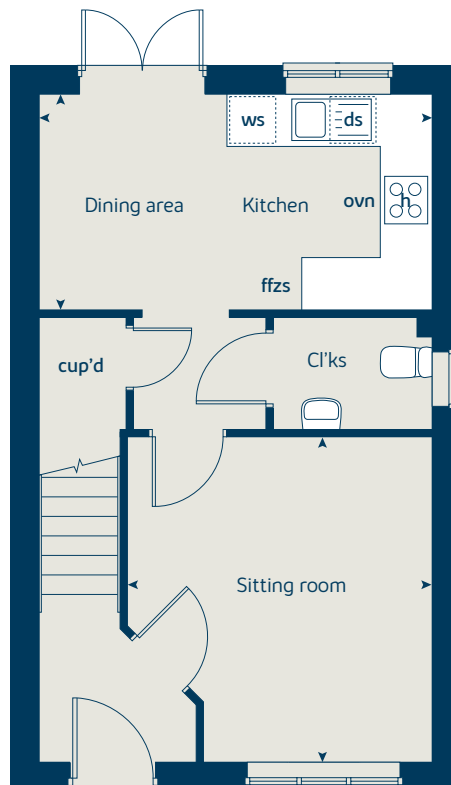
When you have finished with this leaflet please recycle it.

NBEAC GD61647 / 02.22

First floor



Ground floor





The Hawthorn

2 bedroom home

bovishomes.co.uk

**Bovis
Homes** 

The Hawthorn

2 bedroom home

Ground floor	metres	feet / inches
Kitchen	3.78 x 2.92	12' 5" x 9' 7"
Sitting / dining area	4.07 x 4.05	13' 4" x 13' 3"

First floor

Bedroom 1	4.07 x 2.69	13' 4" x 8' 9"
Bedroom 2	4.07 x 2.82	13' 4" x 9' 3"

The Hawthorn | X203 01 NBEAC |

This floorplan has been produced for illustrative purposes only. Room sizes shown are between arrow points as indicated on plan. The dimensions have tolerances of + or -50mm and should not be used other than for general guidance. If specific dimensions are required, enquiries should be made to the sales consultant.

* Windows apply to selected plots only.
Please see sales consultant for further details.

ovn	oven	ffzs	fridge freezer space
h	hob	cup'd	cupboard
ds	dishwasher space	< >	measuring points
ws	washing machine space		

Please refer to the sales consultant for specific plot details as the illustrations shown are computer generated impressions of how the property may look so are indicative only. External details or finishes may vary on individual plots and homes may be built in either detached or attached styles depending on the development layout. Exact specifications, window styles and whether a property is left or right handed may differ from plot to plot.

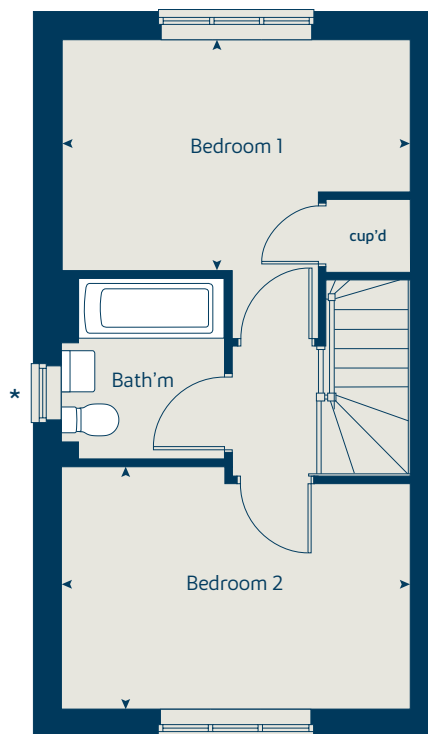
The floorplans shown are not to scale. Measurements are based on the original drawings. Slight variations may occur during construction.

Produced by the Vistry Group Design Studio.

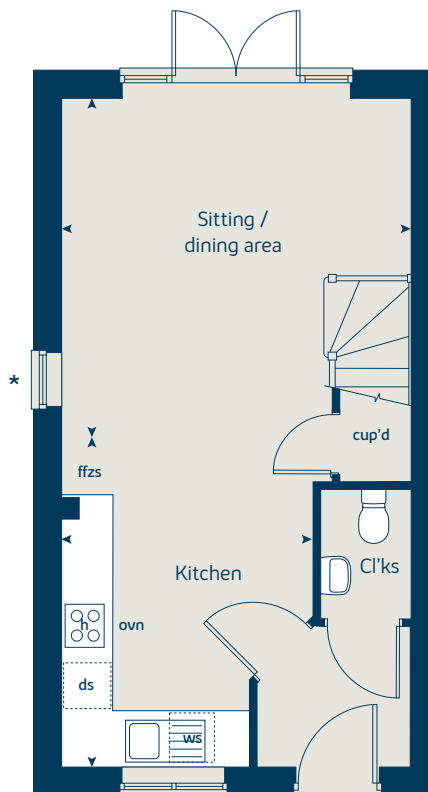
When you have finished with this leaflet please recycle it.

NBEAC GD61647 / 02.22

First floor



Ground floor





The Hazel

3 bedroom home

bovishomes.co.uk

**Bovis
Homes** 

The Hazel

3 bedroom home

Ground floor	metres	feet / inches
Kitchen / dining room	5.19 x 2.99	17' 0" x 9' 9"
Sitting room	4.17 x 3.66	13' 8" x 12' 0"

First floor

Bedroom 1	3.54 x 3.29	11' 7" x 10' 9"
Bedroom 2	2.95 x 2.73	9' 8" x 9' 0"
Bedroom 3	2.44 x 2.15	8' 0" x 7' 0"

The Hazel | X305 01 NBEAC |

This floorplan has been produced for illustrative purposes only. Room sizes shown are between arrow points as indicated on plan. The dimensions have tolerances of + or -50mm and should not be used other than for general guidance. If specific dimensions are required, enquiries should be made to the sales consultant.

* Windows apply to selected plots only. Please see sales consultant for further details.

ovn	oven	ffzs	fridge freezer space
h	hob	cup'd	cupboard
ds	dishwasher space	◀ ▶	measuring points
ws	washing machine space		

Please refer to the sales consultant for specific plot details as the illustrations shown are computer generated impressions of how the property may look so are indicative only. External details or finishes may vary on individual plots and homes may be built in either detached or attached styles depending on the development layout. Exact specifications, window styles and whether a property is left or right handed may differ from plot to plot.

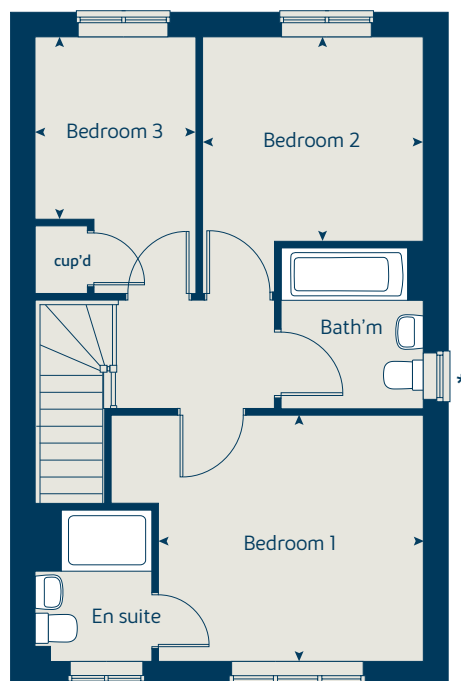
The floorplans shown are not to scale. Measurements are based on the original drawings. Slight variations may occur during construction.

Produced by the Vistry Group Design Studio.

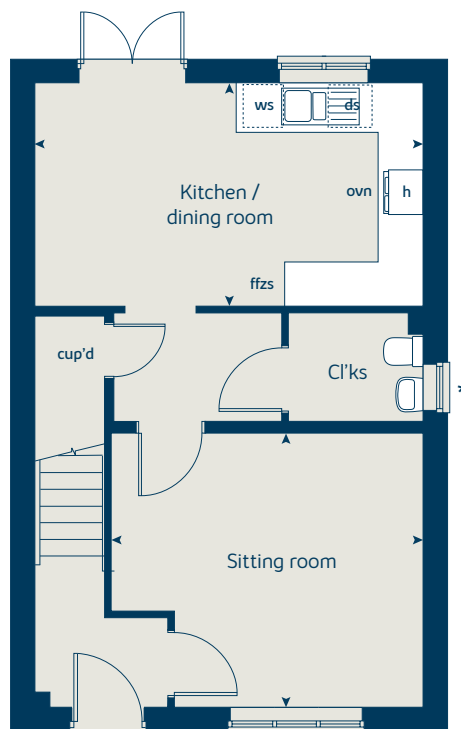
When you have finished with this leaflet please recycle it.

NBEAC GD61647 / 02.22

First floor



Ground floor





The Spruce

3 bedroom home

bovishomes.co.uk

**Bovis
Homes** 

The Spruce

3 bedroom home

Ground floor	metres	feet / inches
Kitchen	3.23 x 2.69	10' 7" x 8' 9"
Dining area	3.14 x 2.30	10' 3" x 7' 6"
Sitting room	5.53 x 3.32	18' 1" x 10' 10"

First floor

Bedroom 1	3.39 x 3.33	11' 1" x 10' 11"
Bedroom 2	3.61 x 3.18	11' 10" x 10' 5"
Bedroom 3	3.61 x 2.25	11' 10" x 7' 4"

The Spruce | X307 (IF) 01 vt NBEAC |

This floorplan has been produced for illustrative purposes only. Room sizes shown are between arrow points as indicated on plan. The dimensions have tolerances of + or -50mm and should not be used other than for general guidance. If specific dimensions are required, enquiries should be made to the sales consultant.

- ① Alternative ground floor layout applies to selected plots only. Please see sales consultant for further details.

ovn	oven	ffzs	fridge freezer space
h	hob	cup'd	cupboard
ds	dishwasher space	< >	measuring points
ws	washing machine space		

Please refer to the sales consultant for specific plot details as the illustrations shown are computer generated impressions of how the property may look so are indicative only. External details or finishes may vary on individual plots and homes may be built in either detached or attached styles depending on the development layout. Exact specifications, window styles and whether a property is left or right handed may differ from plot to plot.

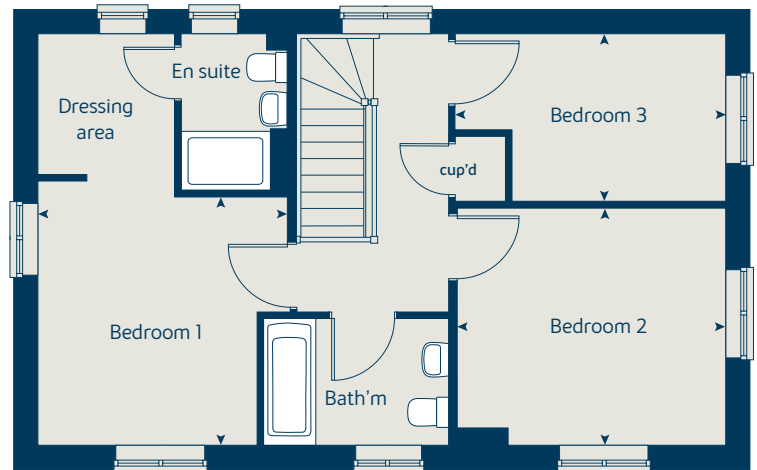
The floorplans shown are not to scale. Measurements are based on the original drawings. Slight variations may occur during construction.

Produced by the Vistry Group Design Studio.

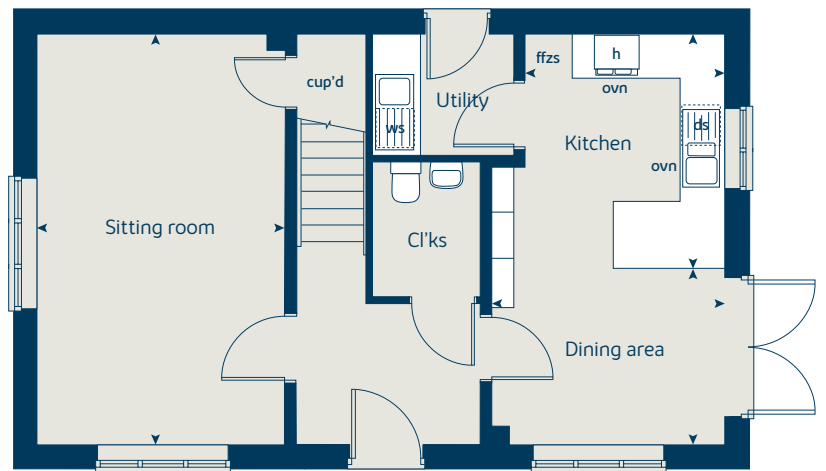
When you have finished with this leaflet please recycle it.

NBEAC GD61647 / 02.22

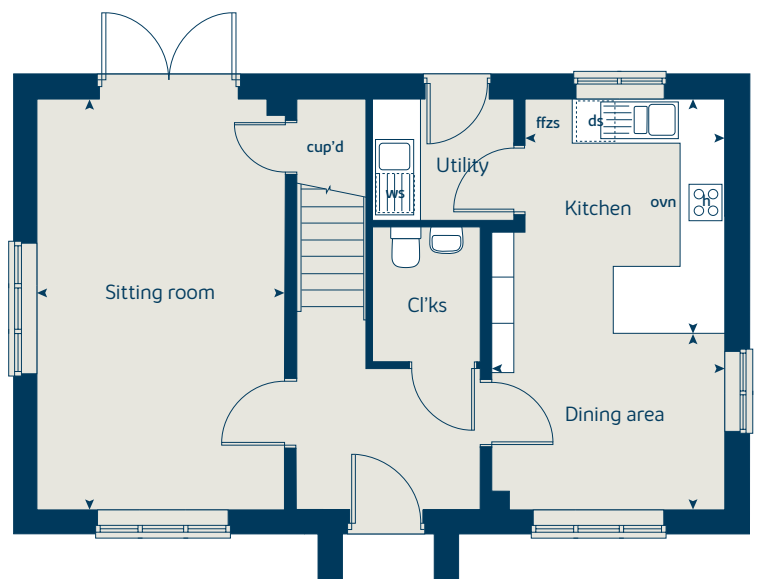
First floor



Ground floor



①





The Magnolia

3 bedroom home

bovishomes.co.uk

**Bovis
Homes** 

The Magnolia

3 bedroom home

Ground floor	metres	feet / inches
Kitchen / dining room	4.74 x 3.37	15' 6" x 11' 0"
Sitting room	3.72 x 3.72	12' 2" x 12' 2"

First floor

Bedroom 1	3.06 x 2.55	10' 0" x 8' 4"
Bedroom 2	3.00 x 2.55	9' 10" x 8' 4"
Bedroom 3	2.81 x 2.10	9' 2" x 6' 10"

The Magnolia | X327 01 NBEAC |

This floorplan has been produced for illustrative purposes only. Room sizes shown are between arrow points as indicated on plan. The dimensions have tolerances of + or -50mm and should not be used other than for general guidance. If specific dimensions are required, enquiries should be made to the sales consultant.

* Windows apply to selected plots only. Please see sales consultant for further details.

ovn	oven	ffzs	fridge freezer space
h	hob	ldr	larder
ds	dishwasher space	cup'd	cupboard
ws	washing machine space	< >	measuring points

Please refer to the sales consultant for specific plot details as the illustrations shown are computer generated impressions of how the property may look so are indicative only. External details or finishes may vary on individual plots and homes may be built in either detached or attached styles depending on the development layout. Exact specifications, window styles and whether a property is left or right handed may differ from plot to plot.

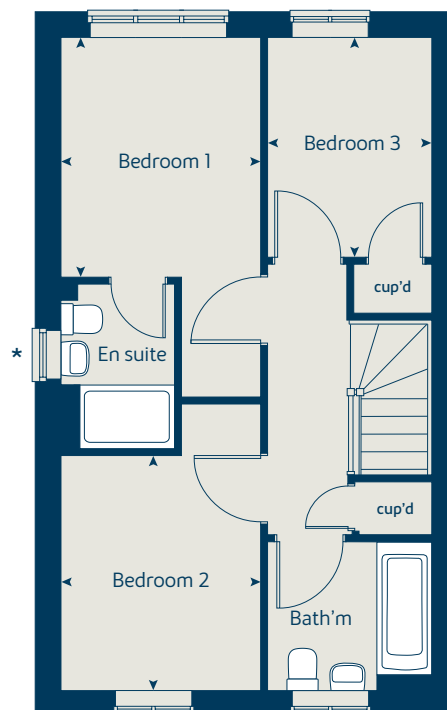
The floorplans shown are not to scale. Measurements are based on the original drawings. Slight variations may occur during construction.

Produced by the Vistry Group Design Studio.

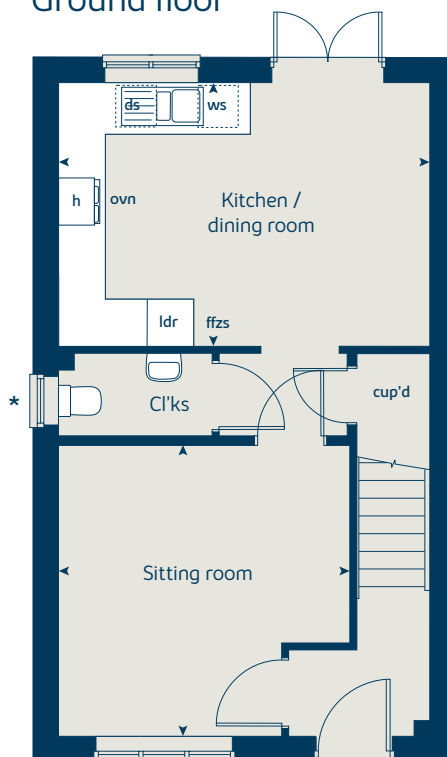
When you have finished with this leaflet please recycle it.

NBEAC GD61647 / 02.22

First floor



Ground floor





The Cypress

3 bedroom home

bovishomes.co.uk

**Bovis
Homes** 

The Cypress

3 bedroom home

Ground floor	metres	feet / inches
Kitchen / dining area	5.52 x 3.12	18' 1" x 10' 2"
Sitting room	4.33 x 3.40	14' 2" x 11' 1"

First floor

Bedroom 1	4.09 x 3.28	13' 5" x 10' 9"
Bedroom 2	3.28 x 2.77	10' 9" x 9' 1"
Bedroom 3	3.54 x 2.16	11' 7" x 7' 1"

The Cypress | X308 (IF) 01 NBEAC |

This floorplan has been produced for illustrative purposes only. Room sizes shown are between arrow points as indicated on plan. The dimensions have tolerances of + or -50mm and should not be used other than for general guidance. If specific dimensions are required, enquiries should be made to the sales consultant.

* Windows apply to selected plots only. Please see sales consultant for further details.

ovn	oven	ffzs	fridge freezer space
h	hob	cup'd	cupboard
ds	dishwasher space	< >	measuring points
ws	washing machine space		

Please refer to the sales consultant for specific plot details as the illustrations shown are computer generated impressions of how the property may look so are indicative only. External details or finishes may vary on individual plots and homes may be built in either detached or attached styles depending on the development layout. Exact specifications, window styles and whether a property is left or right handed may differ from plot to plot.

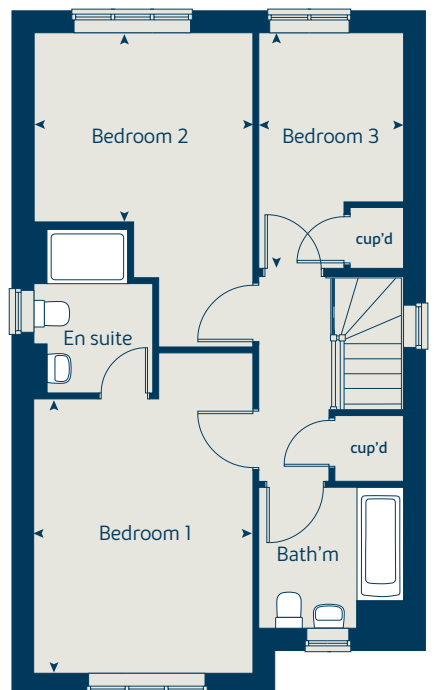
The floorplans shown are not to scale. Measurements are based on the original drawings. Slight variations may occur during construction.

Produced by the Vistry Group Design Studio.

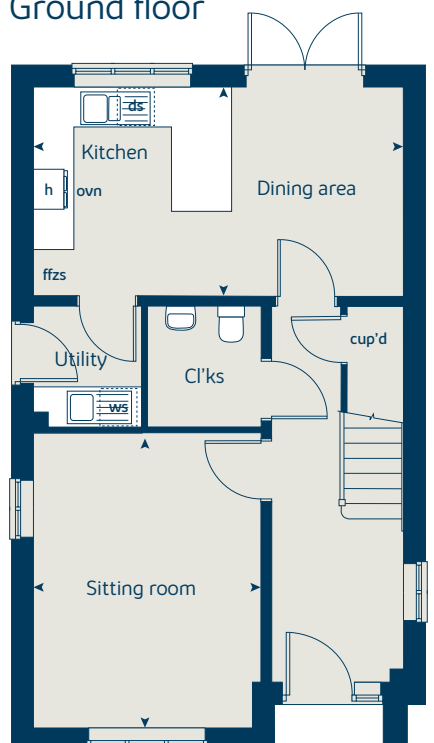
When you have finished with this leaflet please recycle it.

NBEAC GD61647 / 02.22

First floor



Ground floor





The Juniper

4 bedroom home

bovishomes.co.uk

**Bovis
Homes** 

The Juniper

4 bedroom home

Ground floor	metres	feet / inches
Kitchen / dining / family area	7.21 x 3.51	23' 7" x 11' 6"
Sitting room	4.55 x 3.04	14' 7" x 10' 0"
Study	2.34 x 1.85	7' 8" x 6' 0"

First floor

Bedroom 1	4.66 x 3.05	15' 3" x 10' 0"
Bedroom 2	2.97 x 2.84	9' 8" x 9' 3"
Bedroom 3	3.60 x 2.38	11' 9" x 7' 9"
Bedroom 4	3.51 x 2.38	11' 6" x 7' 9"

The Juniper | X412 01 NBEAC |

This floorplan has been produced for illustrative purposes only. Room sizes shown are between arrow points as indicated on plan. The dimensions have tolerances of + or -50mm and should not be used other than for general guidance. If specific dimensions are required, enquiries should be made to the sales consultant.

* Windows apply to selected plots only. Please see sales consultant for further details.

ovn	oven	ffzr	fridge freezer
h	hob	w	wardrobe
ds	dishwasher space	cup'd	cupboard
ws	washing machine space	<>	measuring points
ldr	larder		

Please refer to the sales consultant for specific plot details as the illustrations shown are computer generated impressions of how the property may look so are indicative only. External details or finishes may vary on individual plots and homes may be built in either detached or attached styles depending on the development layout. Exact specifications, window styles and whether a property is left or right handed may differ from plot to plot.

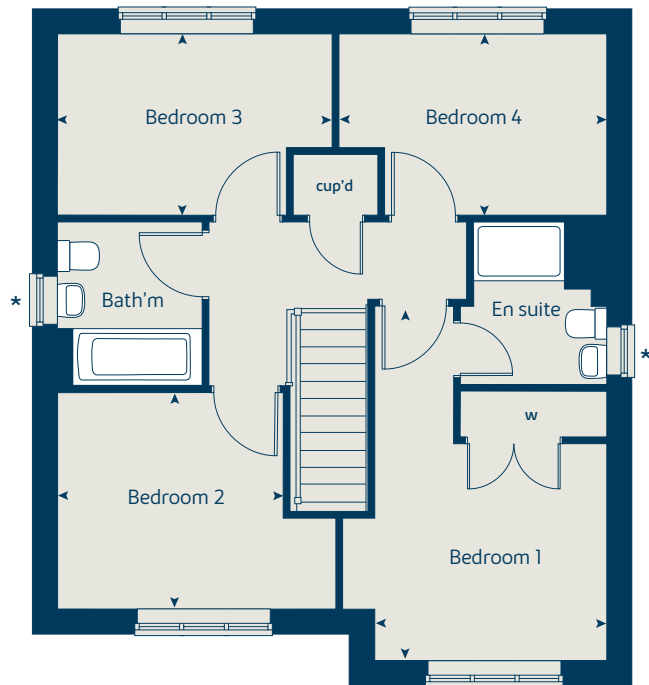
The floorplans shown are not to scale. Measurements are based on the original drawings. Slight variations may occur during construction.

Produced by the Vistry Group Design Studio.

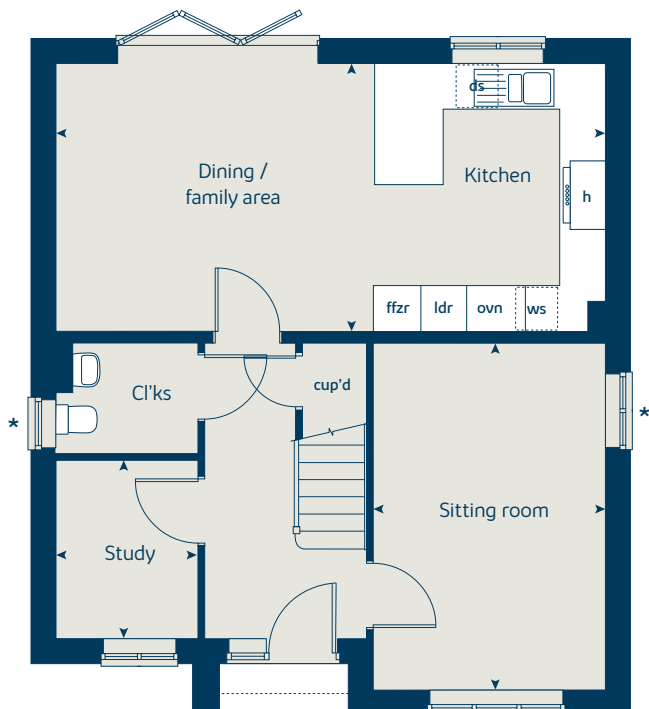
When you have finished with this leaflet please recycle it.

NBEAC GD61647 / 02.22

First floor



Ground floor





The Chestnut

4 bedroom home

bovishomes.co.uk

**Bovis
Homes** 

The Chestnut

4 bedroom home

Ground floor	metres	feet / inches
Kitchen	4.03 x 3.04	13' 2" x 9' 11"
Dining / family area	4.59 x 2.85	15' 0" x 9' 4"
Sitting room	4.98 x 3.40	16' 4" x 11' 1"
Study	3.40 x 1.81	11' 1" x 5' 11"

First floor

Bedroom 1	3.24 x 2.98	10' 7" x 9' 8"
Bedroom 2	3.48 x 3.36	11' 5" x 11' 0"
Bedroom 3	3.25 x 2.35	10' 7" x 7' 8"
Bedroom 4	3.42 x 2.34	11' 2" x 7' 8"

The Chestnut | M413 01 NBEAC |

This floorplan has been produced for illustrative purposes only. Room sizes shown are between arrow points as indicated on plan. The dimensions have tolerances of + or -50mm and should not be used other than for general guidance. If specific dimensions are required, enquiries should be made to the sales consultant.

- ① Alternative ground floor layout applies to selected plots only. Please see sales consultant for further details.

ovn	oven	ffzr	fridge freezer
h	hob	w	wardrobe
ds	dishwasher space	cup'd	cupboard
ws	washing machine space	◀ ▶	measuring points
ldr	larder		

Please refer to the sales consultant for specific plot details as the illustrations shown are computer generated impressions of how the property may look so are indicative only. External details or finishes may vary on individual plots and homes may be built in either detached or attached styles depending on the development layout. Exact specifications, window styles and whether a property is left or right handed may differ from plot to plot.

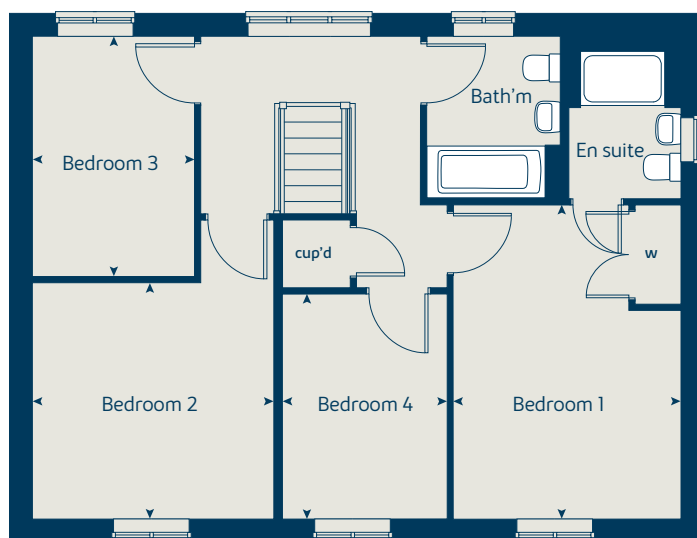
The floorplans shown are not to scale. Measurements are based on the original drawings. Slight variations may occur during construction.

Produced by the Vistry Group Design Studio.

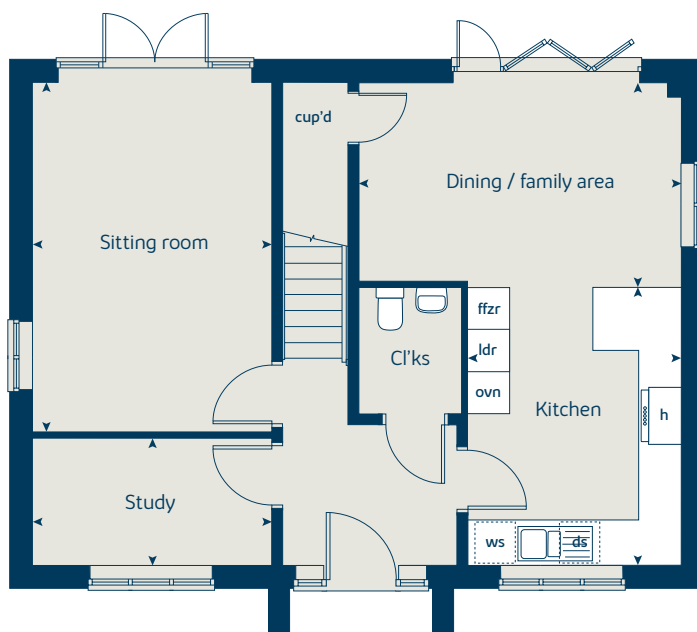
When you have finished with this leaflet please recycle it.

NBEAC GD61647 / 02.22

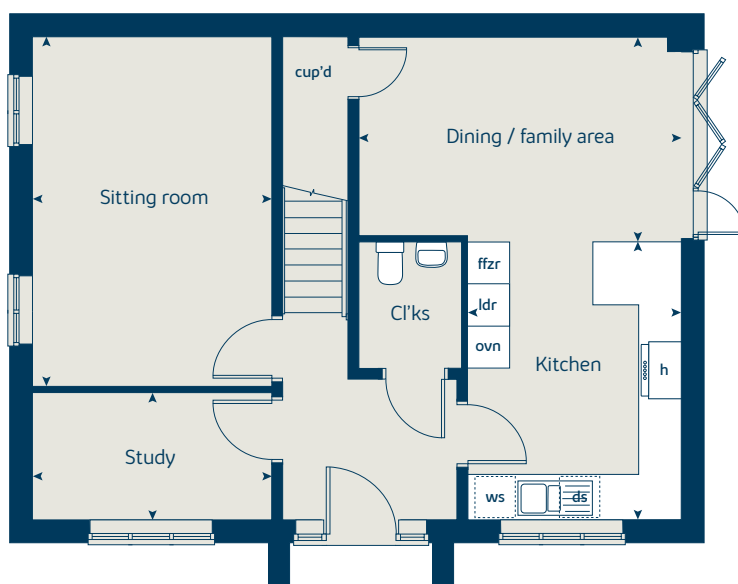
First floor



Ground floor



①





The Aspen

4 bedroom home

bovishomes.co.uk

**Bovis
Homes** 

The Aspen

4 bedroom home

Ground floor	metres	feet / inches
Kitchen / dining area	7.77 x 3.37	25' 6" x 11' 0"
Sitting room	5.04 x 3.39	16' 6" x 11' 1"
Study	2.01 x 2.01	6' 7" x 6' 7"

First floor

Bedroom 1	4.05 x 2.68	13' 3" x 9' 5"
Bedroom 2	3.63 x 3.20	11' 11" x 10' 6"
Bedroom 3	4.07 x 2.45	13' 4" x 8' 0"
Bedroom 4	3.61 x 2.45	11' 10" x 8' 0"

The Aspen | X414 (IF) 01 NBEAC |

This floorplan has been produced for illustrative purposes only. Room sizes shown are between arrow points as indicated on plan. The dimensions have tolerances of + or -50mm and should not be used other than for general guidance. If specific dimensions are required, enquiries should be made to the sales consultant.

ovn	oven	ldr	larder
h	hob	w	wardrobe
ds	dishwasher space	cup'd	cupboard
ws	washing machine space	◀ ▶	measuring points
ffzr	fridge freezer		

Please refer to the sales consultant for specific plot details as the illustrations shown are computer generated impressions of how the property may look so are indicative only. External details or finishes may vary on individual plots and homes may be built in either detached or attached styles depending on the development layout. Exact specifications, window styles and whether a property is left or right handed may differ from plot to plot.

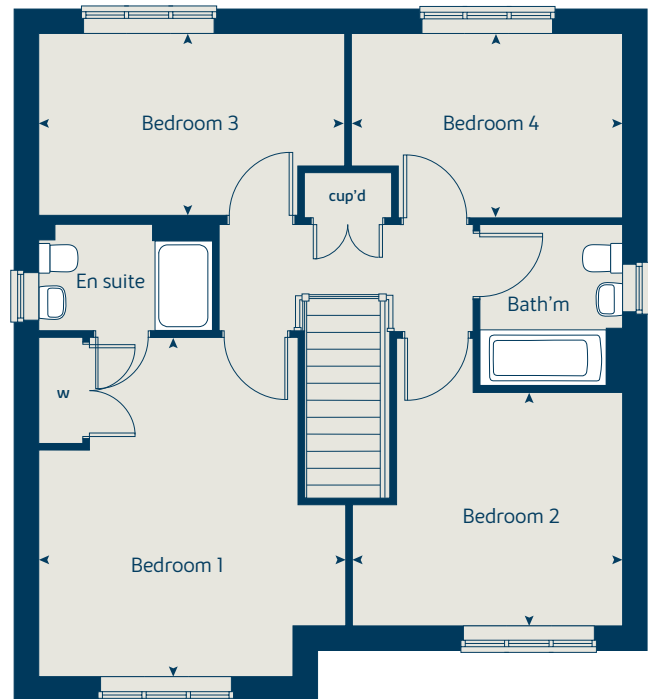
The floorplans shown are not to scale. Measurements are based on the original drawings. Slight variations may occur during construction.

Produced by the Vistry Group Design Studio.

When you have finished with this leaflet please recycle it.

NBEAC GD61647 / 02.22

First floor



Ground floor

