

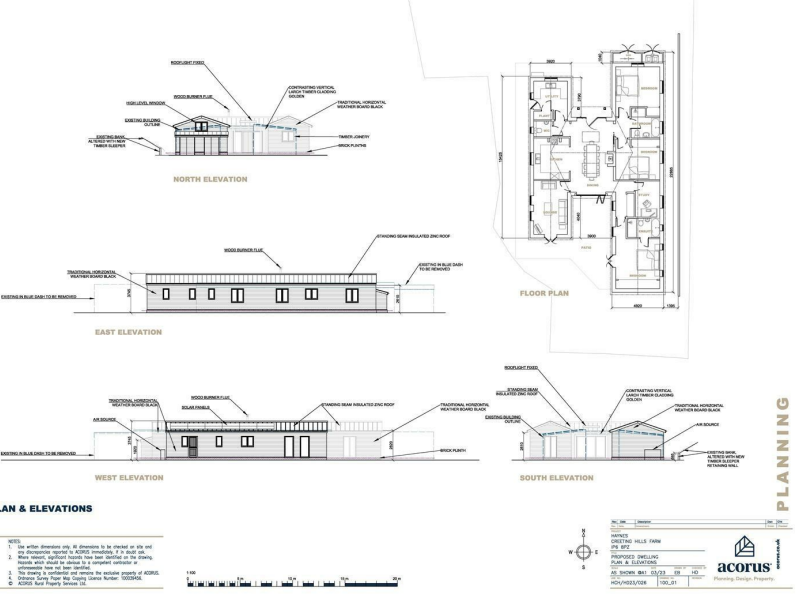
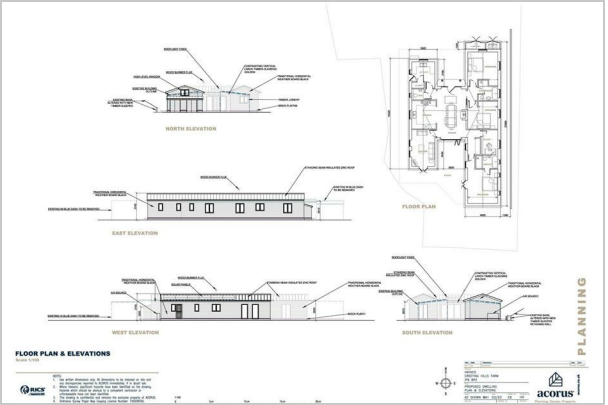


Creting St. Mary  
£300,000



# Features

- 2 ACRE BUILDING PLOT
- FULL PLANNING PERMISSION FOR APPX 2500 SQ FT HOME
- STUNNING LOCATION
- PANORAMIC VIEWS OVER THE GIPPING VALLEY



**\*\* BUILDING PLOT WITH FULL PLANNING PERMISSION\*\***

Nestled in the heart of the captivating Suffolk countryside, this exceptional plot presents a rare opportunity for self-builders and developers to craft their dream home within an idyllic rural setting. Imagine two acres of land (stms), perched in an elevated spot that offers awe-inspiring, panoramic views across the lush Gipping Valley – a scenic tapestry that changes with the seasons.

This enviable plot comes with the considerable advantage of full planning permission, a green light from Mid Suffolk District Council to transform the existing equestrian structures into a chic, barn-style residence. The single-storey design promises contemporary living that harmonises with its tranquil surroundings, encapsulating the essence of countryside elegance. For those with a vision, this is a canvas awaiting its masterpiece, with detailed plans accessible via the Mid-Suffolk planning portal.

What's more, this plot doesn't just offer a foundation for a house, but a potential lifestyle change. With current amenities including a ménage, a hay barn, an additional detached hay/machinery barn, and ample storage for tack and feed, there's scope for a variety of country pursuits and potential business ventures.

The planning permission was secured on 26th July 2023, and the commencement of works must be undertaken by 6th July 2026. This is more than just land for sale – it's a gateway to a new chapter, a bespoke build project that could blossom into a forever home or a lucrative development project. Don't miss out on the chance to own a slice of Suffolk's finest and bring your architectural ambitions to life.



These particulars, whilst believed to be accurate are set out as a general outline only for guidance and do not constitute any part of an offer or contract. Intending purchasers should not rely on them as statements of representation of fact, but must satisfy themselves by inspection or otherwise as to their accuracy. No person in this firm's employment has the authority to make or give any representation or warranty in respect of the property.

6 Dairy Barn Mews, Summers Park, Lawford, Manningtree, Essex, CO11 2BZ  
 Tel: 01206 646479 Email: info@chamberlainphillips.co.uk www.chamberlainphillips.co.uk