



The Avenue, Manningtree
£1,800 PCM

Manningtree

A contemporary three-bedroom semi-detached home, built just five years ago in the sought-after Barbier design, located within a highly requested residential development less than one mile from Manningtree mainline station.

This beautifully presented property offers stylish open-plan living, with a spacious living/dining area featuring a part-vaulted ceiling, roof-light windows and impressive bi-folding doors opening directly onto the rear garden. The modern kitchen is fully equipped with integrated appliances including a fridge/freezer, washing machine, dishwasher, oven and hob.

The principal bedroom benefits from fitted wardrobes and its own en-suite shower room, with two further well-proportioned bedrooms and a family bathroom completing the first floor.

Additional features include underfloor heating to the ground floor, a driveway providing parking for multiple vehicles, a single garage with electric door, and a generous rear garden.

The property is offered unfurnished and is available immediately.

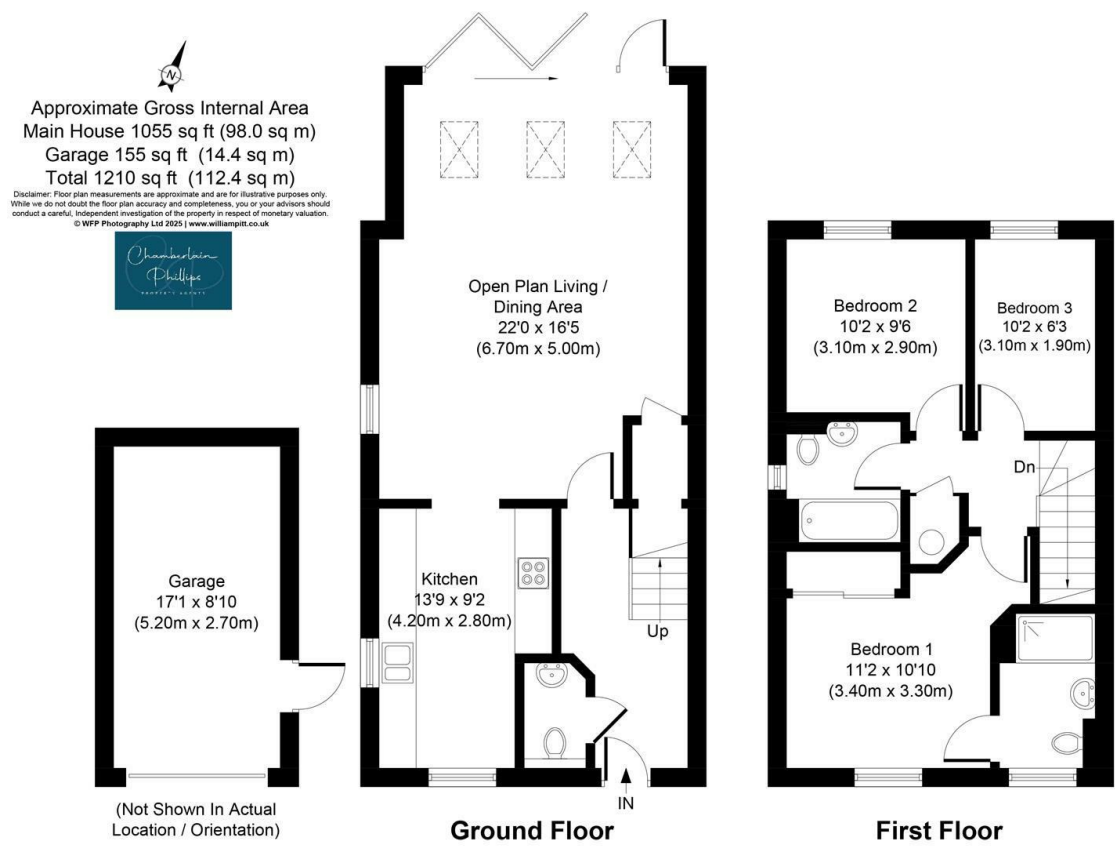




- AVAILABLE NOW
- THREE BEDROOMS
- EN-SUITE AND FITTED WARDROBES TO PRINCIPAL
- ONLY 5 YEARS OLD SET IN REQUESTED DEVELOPMENT
- SINGLE GARAGE
- INTEGRATED FRIDGE/FREEZER, OVEN, HOB, DISHWASHER AND WASHING MACHINE



Floor Plan



Viewing

Please contact our Chamberlain Phillips Manningtree Office on 01206 646479 if you wish to arrange a viewing appointment for this property or require further information.

These particulars, whilst believed to be accurate are set out as a general outline only for guidance and do not constitute any part of an offer or contract. Intending purchasers should not rely on them as statements of representation of fact, but must satisfy themselves by inspection or otherwise as to their accuracy. No person in this firms employment has the authority to make or give any representation or warranty in respect of the property.

6 Dairy Barn Mews, Summers Park, Lawford, Manningtree, Essex, CO11 2BZ
Tel: 01206 646479 Email: info@chamberlainphillips.co.uk www.chamberlainphillips.co.uk

Area Map



Energy Efficiency Graph



Council Tax Band - D

Tenure -