



Chequers Road, Little Bromley  
£575,000

## Chequers Road

Chamberlain Phillips is delighted to introduce this superb four bedroom detached home, offering a blend of luxury and tranquillity, perfect for growing families.

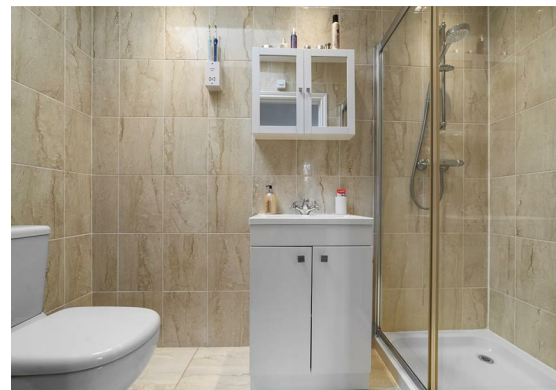
Individually crafted a mere decade ago, this haven has been lovingly maintained by its original owners and boasts a generous 0.2-acre plot (STS), whilst being encased by surrounding farmland to the front and rear.

Step into the property to be greeted by an inviting entrance hallway complete with a convenient WC. Culinary delights await in the stylishly fitted kitchen, replete with sleek integrated appliances. Seamlessly flowing from the kitchen is a dedicated dining room, ensuring meal times are both elegant and effortless. The living room is a sanctuary of relaxation, featuring a cosy log burner. An additional conservatory presents a tranquil spot, offering views and access to the rear garden, which is a verdant tapestry backing onto undisturbed fields.

Upstairs, the spacious bedrooms offer a private escape, with the principal bedroom boasting a chic en-suite shower room. Bedroom two also features a convenient WC, further enhancing this home's thoughtful layout.

With an enclosed rear garden presenting a safe play area for children and a single garage coupled with ample driveway parking, this property truly understands the needs of a bustling family life. Immerse yourself in the heart of countryside living, where peace and privacy are yours to cherish.





- FOUR BEDROOM DETACHED HOME
- FIELDS TO FRONT AND REAR
- EN-SUITE TO BEDROOM ONE
- 0.2 ACRE PLOT (STS)
- LIVING ROOM WITH LOG BURNER
- VILLAGE LOCATION
- MULTIPLE RECEPTION ROOMS
- SINGLE GARAGE AND DRIVEWAY PARKING
- VIEWING ADVISED
- DOWNSTAIRS WC

#### Location:

Little Bromley is in the Tendring district of Essex. The name "Bromley" is Old English for "broomy wood/clearing". The village lies 5.6 miles east northeast of Colchester and 13 miles from Ipswich providing good access to major roads such as the A120 and A12.

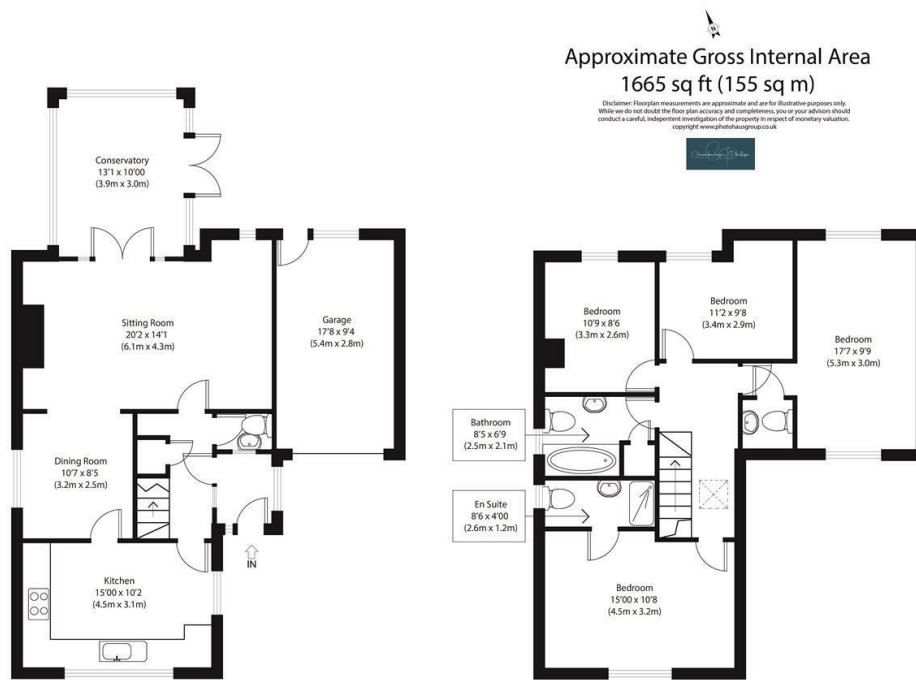
Also situated within 3 miles Manningtree town centre which benefits from a range of local shops, supermarkets restaurants, public houses as well as primary and secondary schools.

#### Agents Notes:

Tenure - Freehold  
Council tax - Band E  
Services - Mains Electric and Water  
Drainage - Private  
Heating - Radiators via oil boiler  
Mobile - All networks cover indoor  
Broadband - Ultrafast is available



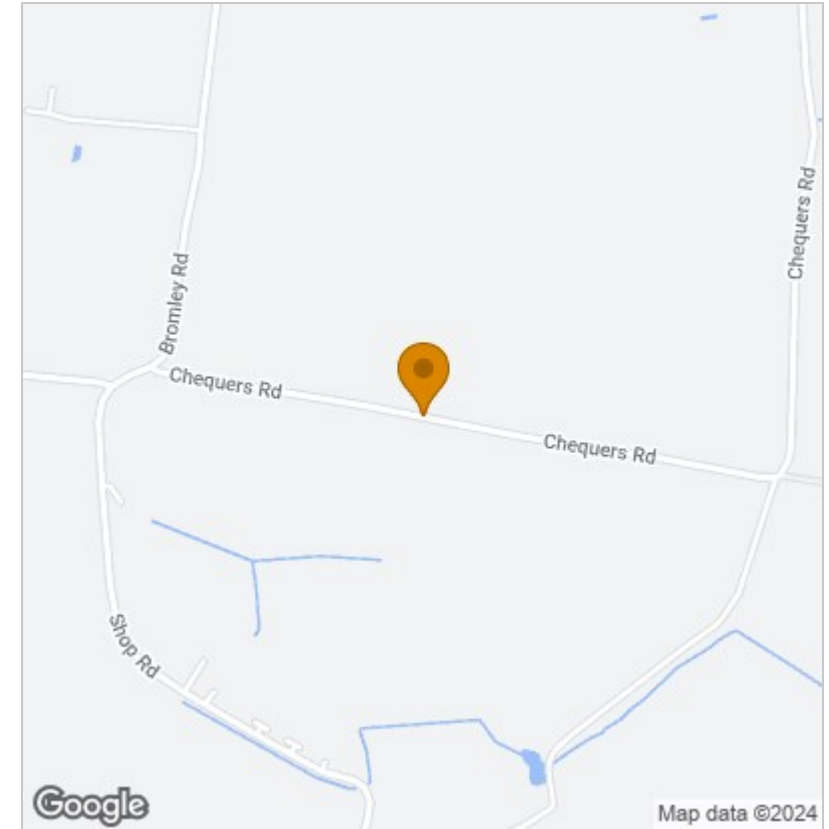
## Floor Plan



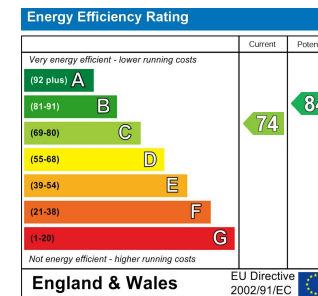
Ground Floor

First Floor

## Area Map



## Energy Efficiency Graph



Council Tax Band - E

Tenure - Freehold

## Viewing

Please contact our Manningtree Office on 01206 646479 if you wish to arrange a viewing appointment for this property or require further information.

These particulars, whilst believed to be accurate are set out as a general outline only for guidance and do not constitute any part of an offer or contract. Intending purchasers should not rely on them as statements of representation of fact, but must satisfy themselves by inspection or otherwise as to their accuracy. No person in this firm's employment has the authority to make or give any representation or warranty in respect of the property.

6 Dairy Barn Mews, Summers Park, Lawford, Manningtree, Essex, CO11 2BZ  
Tel: 01206 646479 Email: info@chamberlainphillips.co.uk www.chamberlainphillips.co.uk