

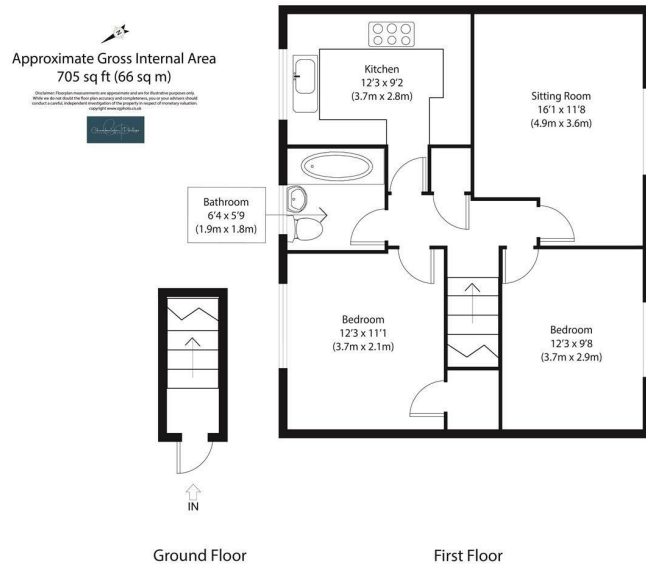


Waldegrave Way, Manningtree  
Asking Price £200,000



## Features

- FIRST FLOOR MAISONETTE
- ENCLOSED PRIVATE GARDEN
- TWO DOUBLE BEDROOMS
- YIELD IN EXCESS OF 4.5%
- VIEWING ADVISED



Discover your perfect first home or investment property with this two-bedroom, first-floor maisonette, nestled in the charming village of Lawford, Manningtree. Boasting a fantastic location near local amenities, you'll find everything you need right on your doorstep.

As you step inside, you'll immediately appreciate the bright and spacious living areas this property has to offer. The accommodation comprises in brief; hallway, living room, kitchen, two double bedrooms and a family bathroom.

One of the standout features of this home is the private enclosed garden. This generous outdoor space offers an idyllic haven for those who love to relax or entertain in their own slice of greenery.

With its popular location, close proximity to amenities, and attractive features, this property is an ideal choice for first-time buyers or savvy investors seeking a great addition to their portfolio. Don't miss out on this exceptional opportunity – arrange a viewing today!

### AGENTS NOTE:

102 years lease remaining  
Ground Rent - £121.00 per annum  
Service Charge - £0.00 per annum



These particulars, whilst believed to be accurate are set out as a general outline only for guidance and do not constitute any part of an offer or contract. Intending purchasers should not rely on them as statements of representation of fact, but must satisfy themselves by inspection or otherwise as to their accuracy. No person in this firm's employment has the authority to make or give any representation or warranty in respect of the property.

6 Dairy Barn Mews, Summers Park, Lawford, Manningtree, Essex, CO11 2BZ  
Tel: 01206 646479 Email: [info@chamberlainphillips.co.uk](mailto:info@chamberlainphillips.co.uk) [www.chamberlainphillips.co.uk](http://www.chamberlainphillips.co.uk)