

# CHARMILL

RESIDENTIAL



**Strathmore Court, St John's Wood NW8**

**£2,090**



6



2



1



C



# Park Road



## Description

The six bedroom apartment spanning across 2553 square feet is located on the second floor of this prestigious mansion block offering fabulous views over Regents Park. The apartment benefits from ample storage space and comprises a double reception room, fully fitted kitchen, six spacious double bedrooms, two family bathrooms, and a guest cloakroom. The apartment offers easy access to the famous Lords Cricket Ground, the open spaces of Regent's Park, along with all the local shops, bars, restaurants located on St John's Wood High Street.

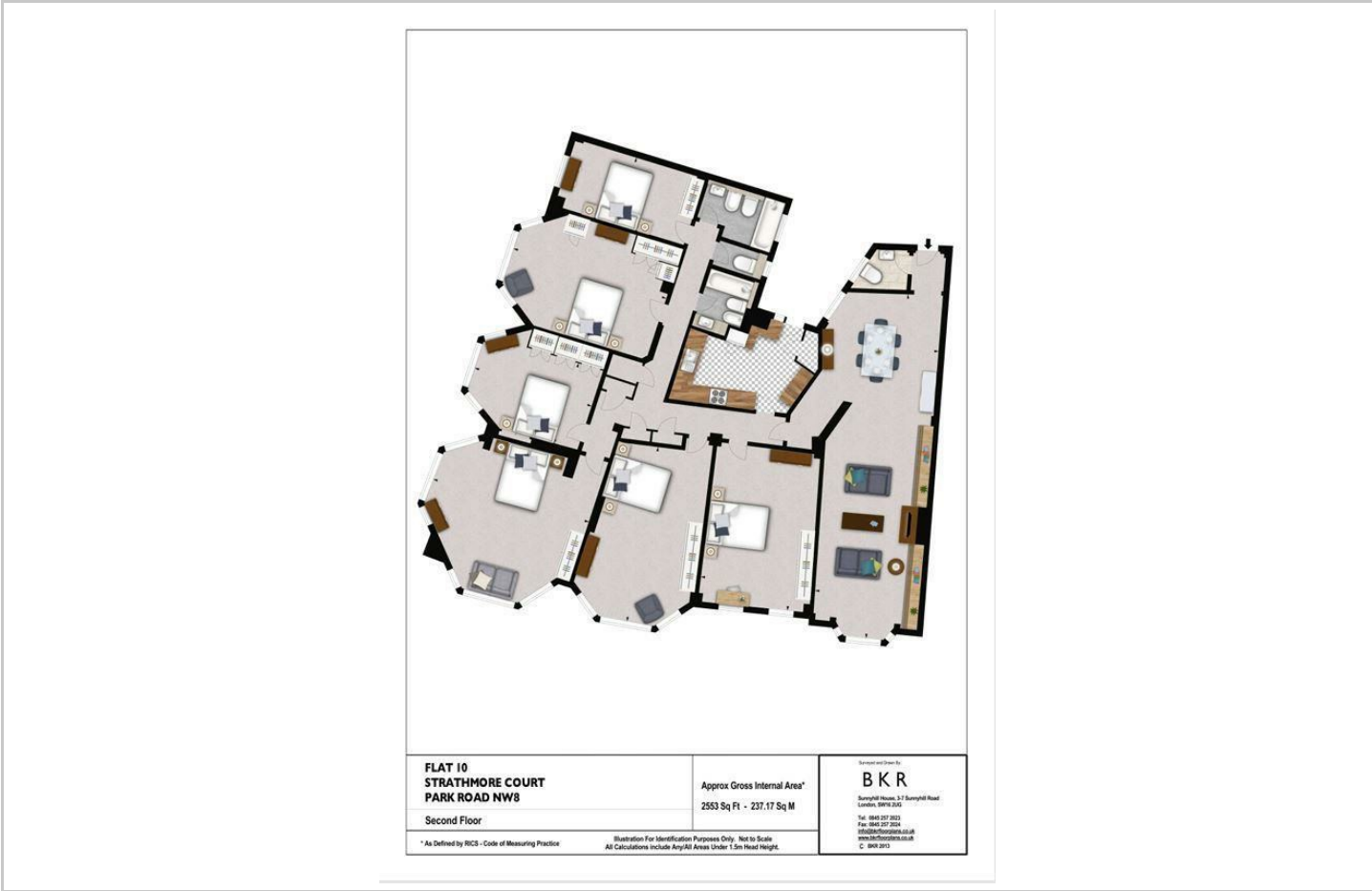
- Six bedrooms
- Open plan reception/dining room
- In house maintenance
- Available furnished or unfurnished
- Two bathrooms
- Seperate Kitchen room
- Building manager
- Second floor



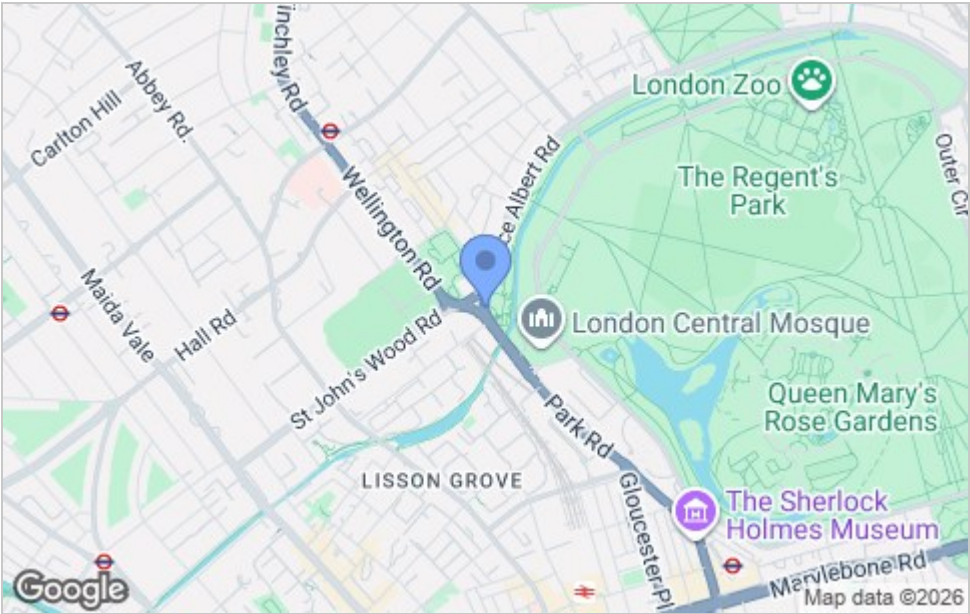




Floor Plan



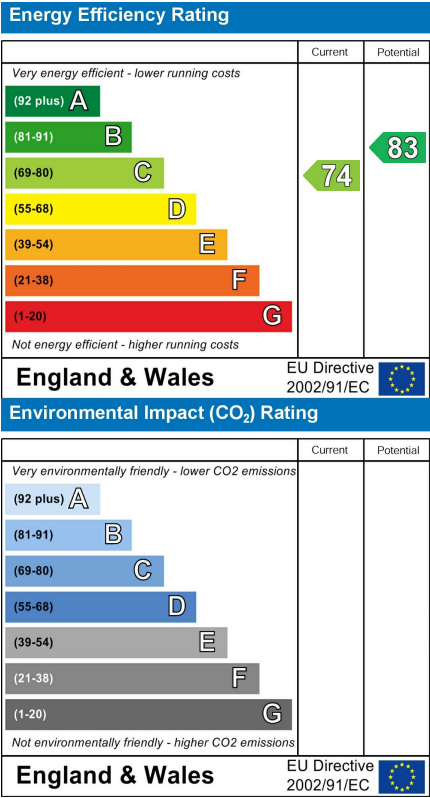
Area Map



Viewing

Please contact us on 020 7046 6275 if you wish to arrange a viewing appointment for this property or require further information.

Energy Efficiency Graph



These particulars, whilst believed to be accurate are set out as a general outline only for guidance and do not constitute any part of an offer or contract. Intending purchasers should not rely on them as statements of representation of fact, but must satisfy themselves by inspection or otherwise as to their accuracy. No person in this firm's employment has the authority to make or give any representation or warranty in respect of the property.

020 7046 6275 • sales@charmillresidential.co.uk • 51 Maida Vale, Little Venice, London W9 1SD  
charmillresidential.co.uk