

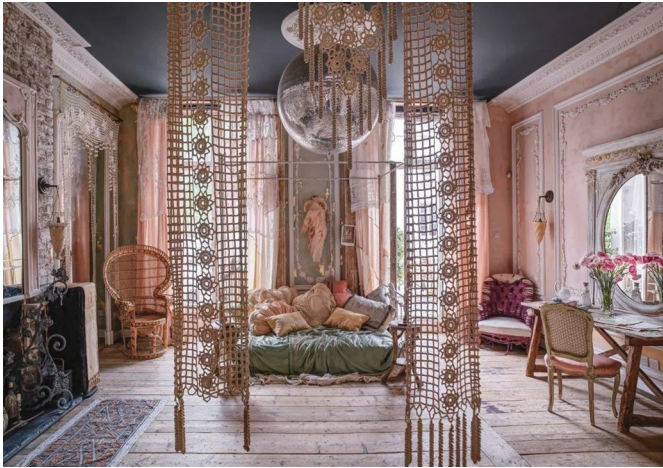
CHARMILL

RESIDENTIAL



Randolph Avenue, Little Venice W9

£1,730



80H Randolph Avenue, Little Venice, London, W9 1BG

£1,730

A one-of-a-kind apartment arranged on the first floor of a handsome white stucco-fronted conversion on one of Little Venice's finest tree lined avenues. The apartment is approximately 1,442 sq ft and can be arranged as either two spacious 20 ft reception rooms with one double bedroom or alternately two bedrooms with one 20 ft reception room. The property boasts high ceilings throughout, a separate fully fitted eat-in kitchen, a dressing room, a family bathroom and an en-suite shower room. This truly unique apartment further benefits from a private terrace off the reception room and a lift within the building.

Randolph Avenue is superbly positioned moments from Regents Canal and the shops, restaurants and cafes on Clifton Road. Warwick Avenue station (Bakerloo line) is just 0.3 miles away and Paddington station is also within easy reach, offering Circle, District, Bakerloo and Hammersmith & City lines together with National Rail services and the Heathrow Express providing access to Heathrow Airport in 15 minutes as well as the new Elizabeth line connecting you to Canary Wharf in just 18 minutes.

Description

Situation

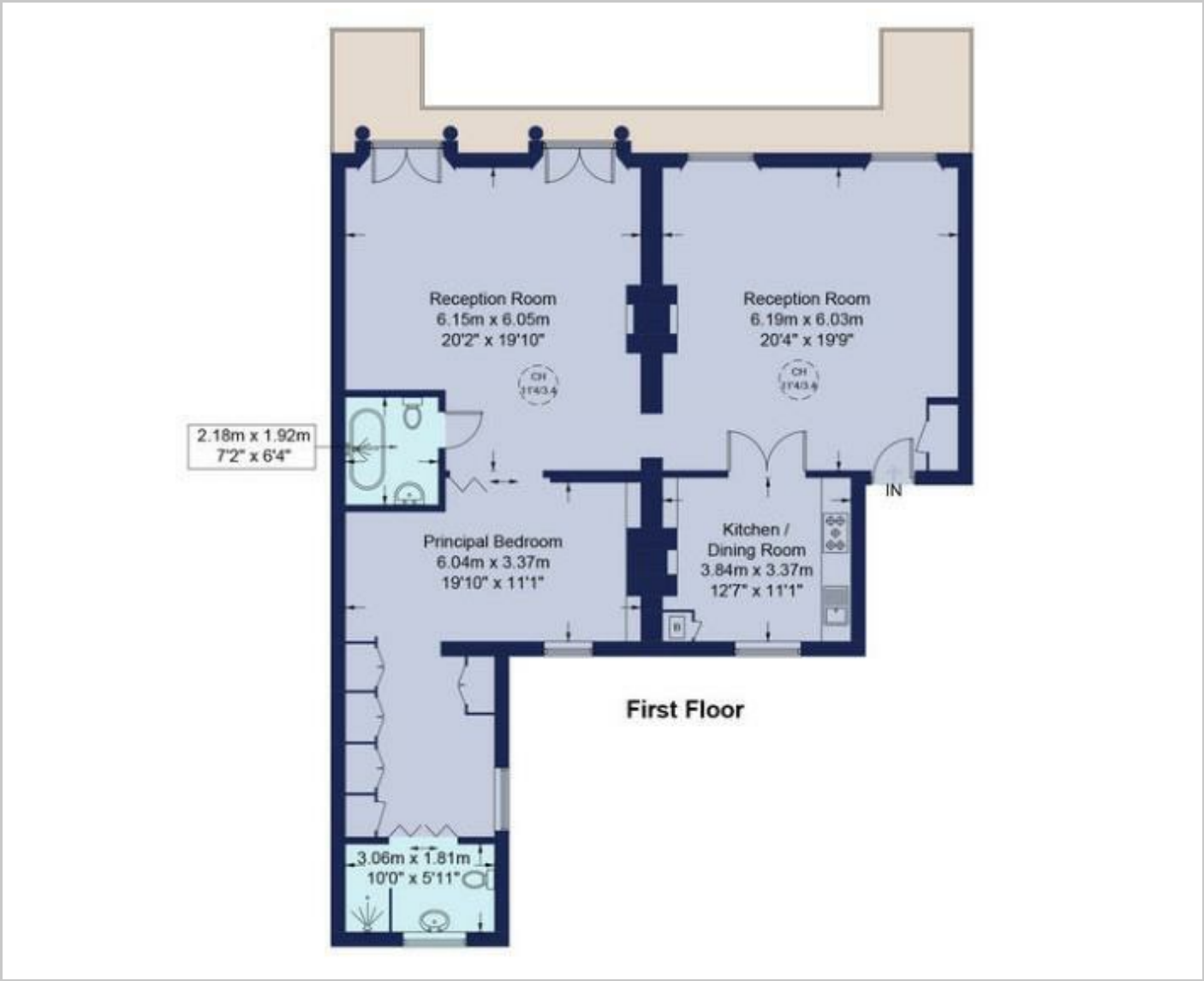
Not specified

Council Tax Band: G

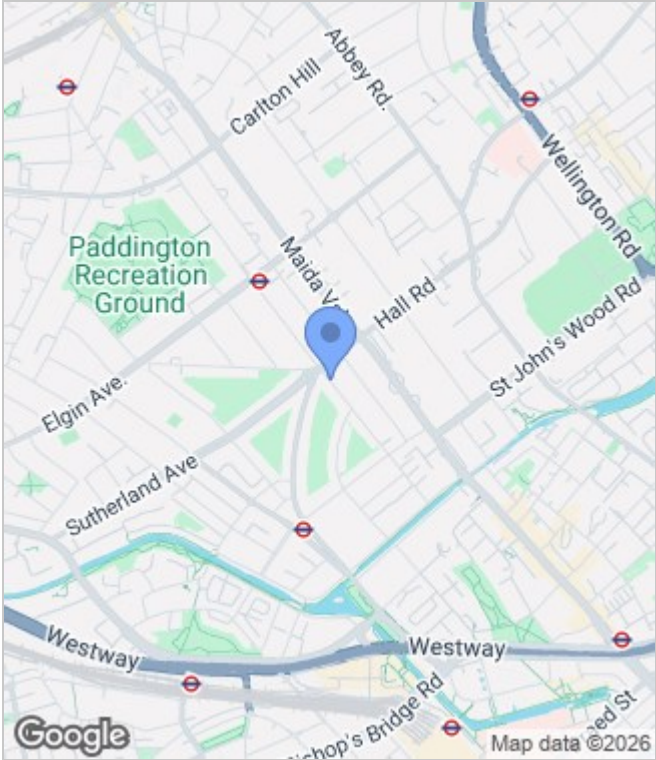
Available: 20th February 2026



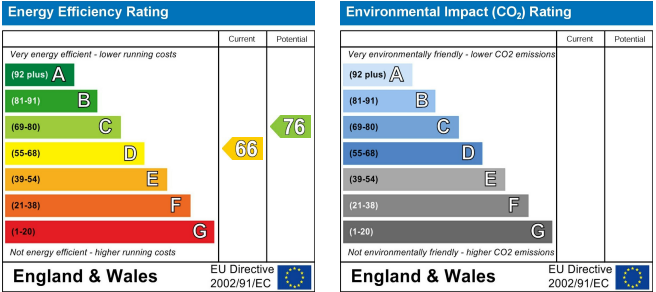
Floor Plans



Area Map



Energy Performance Graph



These particulars, whilst believed to be accurate are set out as a general outline only for guidance and do not constitute any part of an offer or contract. Intending purchasers should not rely on them as statements of representation of fact, but must satisfy themselves by inspection or otherwise as to their accuracy. No person in this firm's employment has the authority to make or give any representation or warranty in respect of the property.

