

# CHARMILL

## RESIDENTIAL



### Belgrave Gardens, St Johns Wood NW8

A recently redecorated one bedroom ground floor apartment within a purpose-built block located just off the famous Abbey Road. The apartment comprises a reception/dining room with wood flooring, separate fitted kitchen with appliances, double bedroom with built in storage and a full bathroom suite.

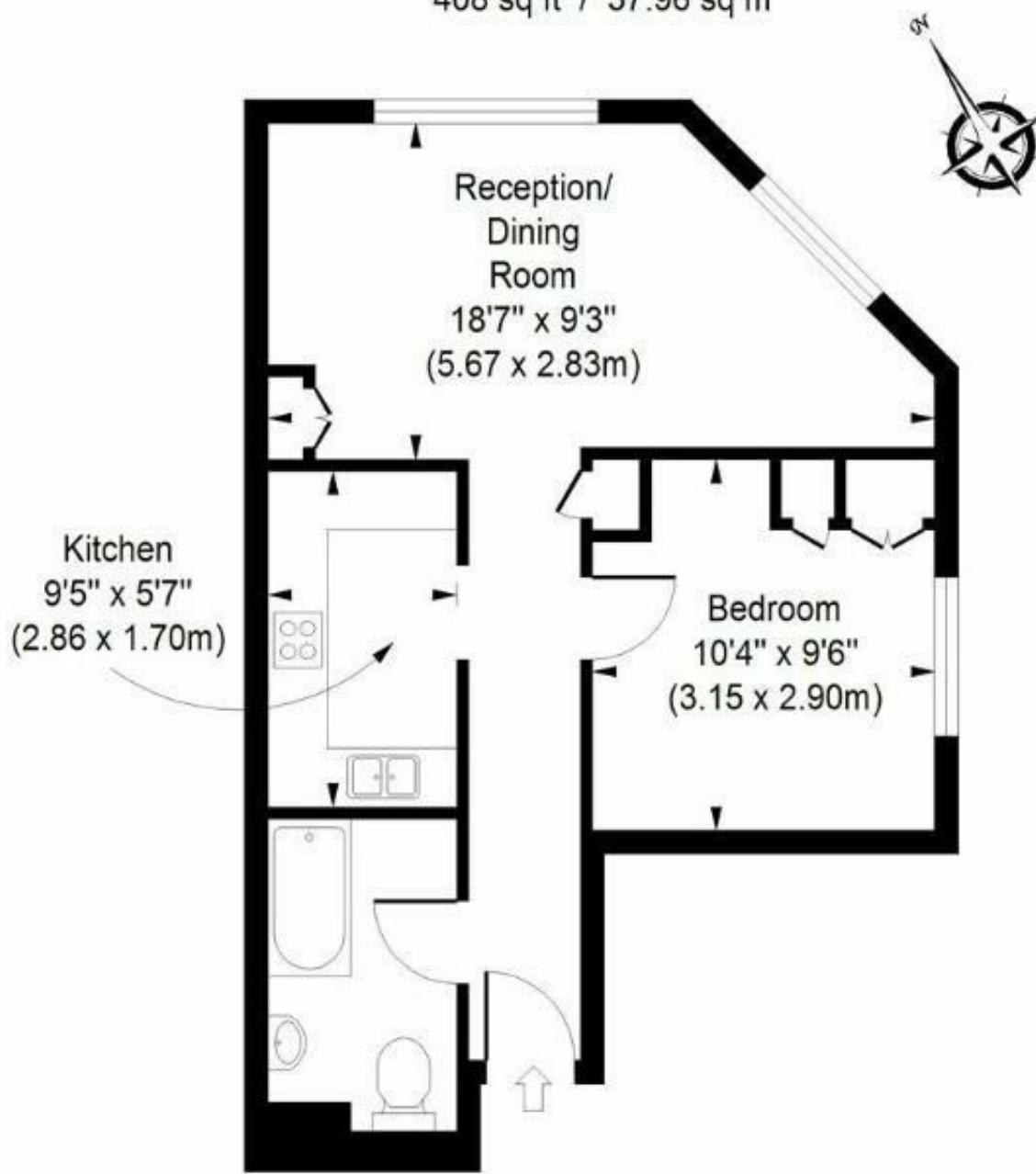
- Ground floor
- One bedroom
- Wooden flooring
- Quite location
- Recently re-decorated

£415

# Belgrave Gardens

Approximate Gross Internal Area

408 sq ft / 37.96 sq m



Ground Floor

Energy Efficiency Rating		Current	Potential
Very energy efficient - lower running costs			
(92 plus) A			
(81-91) B			
(69-80) C			
(55-68) D			
(39-54) E			
(21-38) F			
(1-20) G			
Not energy efficient - higher running costs			
England & Wales		76	77
		EU Directive 2002/91/EC	

Environmental Impact (CO <sub>2</sub> ) Rating		Current	Potential
Very environmentally friendly - lower CO <sub>2</sub> emissions			
(92 plus) A			
(81-91) B			
(69-80) C			
(55-68) D			
(39-54) E			
(21-38) F			
(1-20) G			
Not environmentally friendly - higher CO <sub>2</sub> emissions			
England & Wales		74	74
		EU Directive 2002/91/EC	

