

CHARMILL

RESIDENTIAL

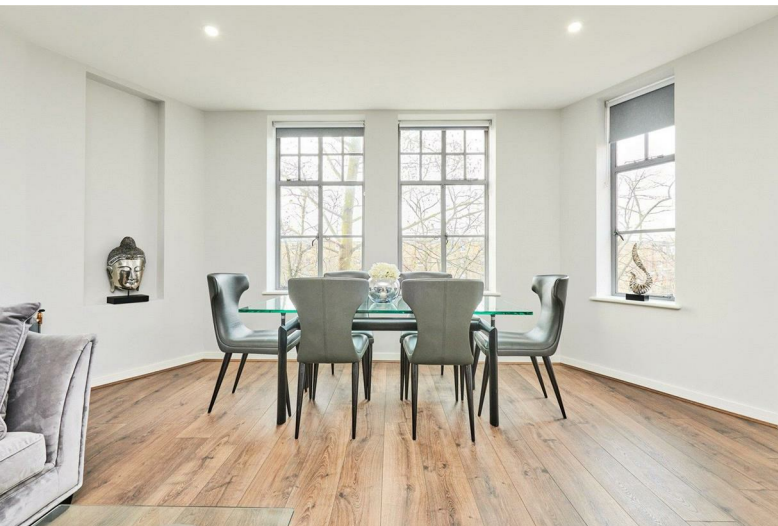


Maida Vale W9

£1,269



Maida Vale W9

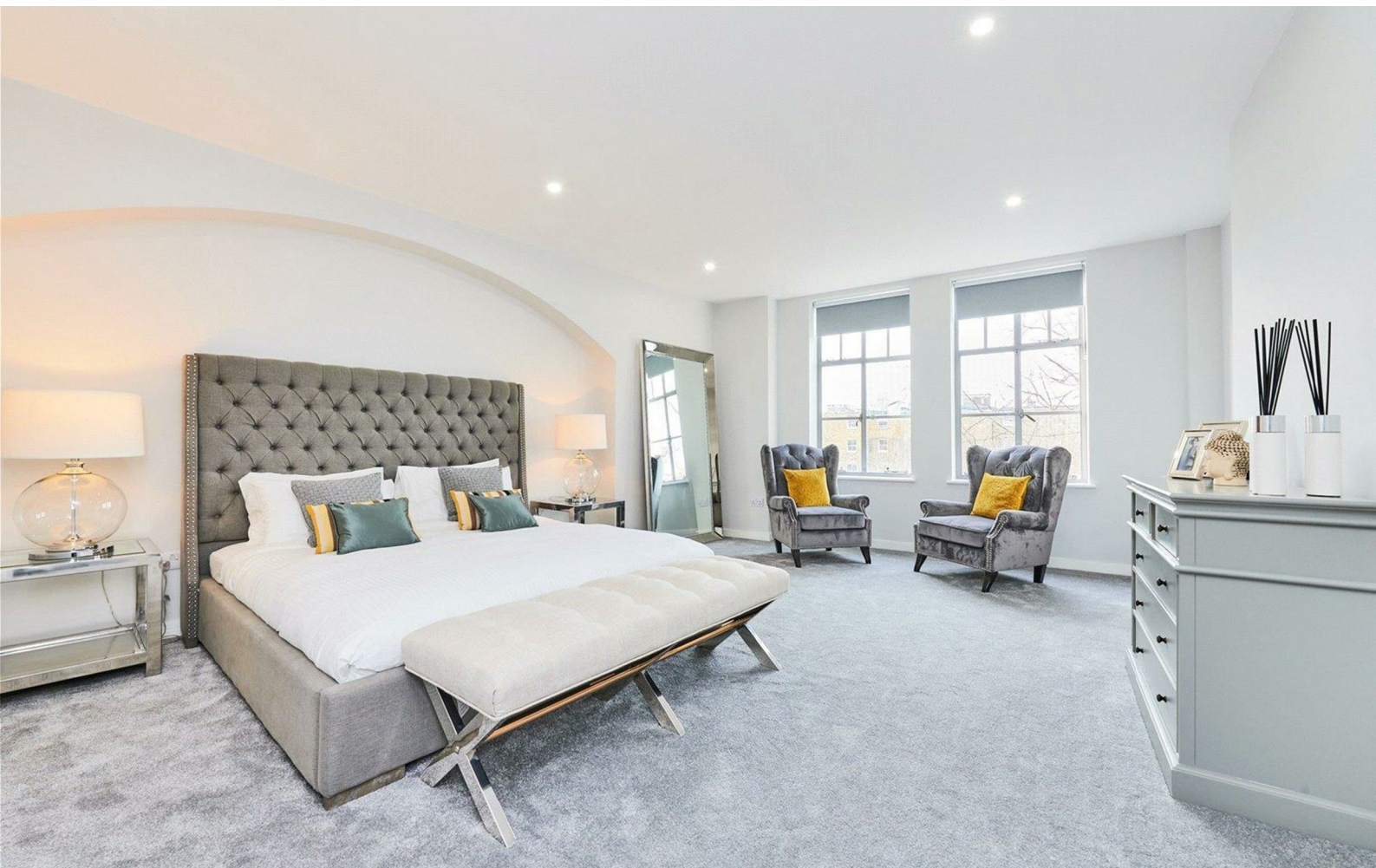


Description

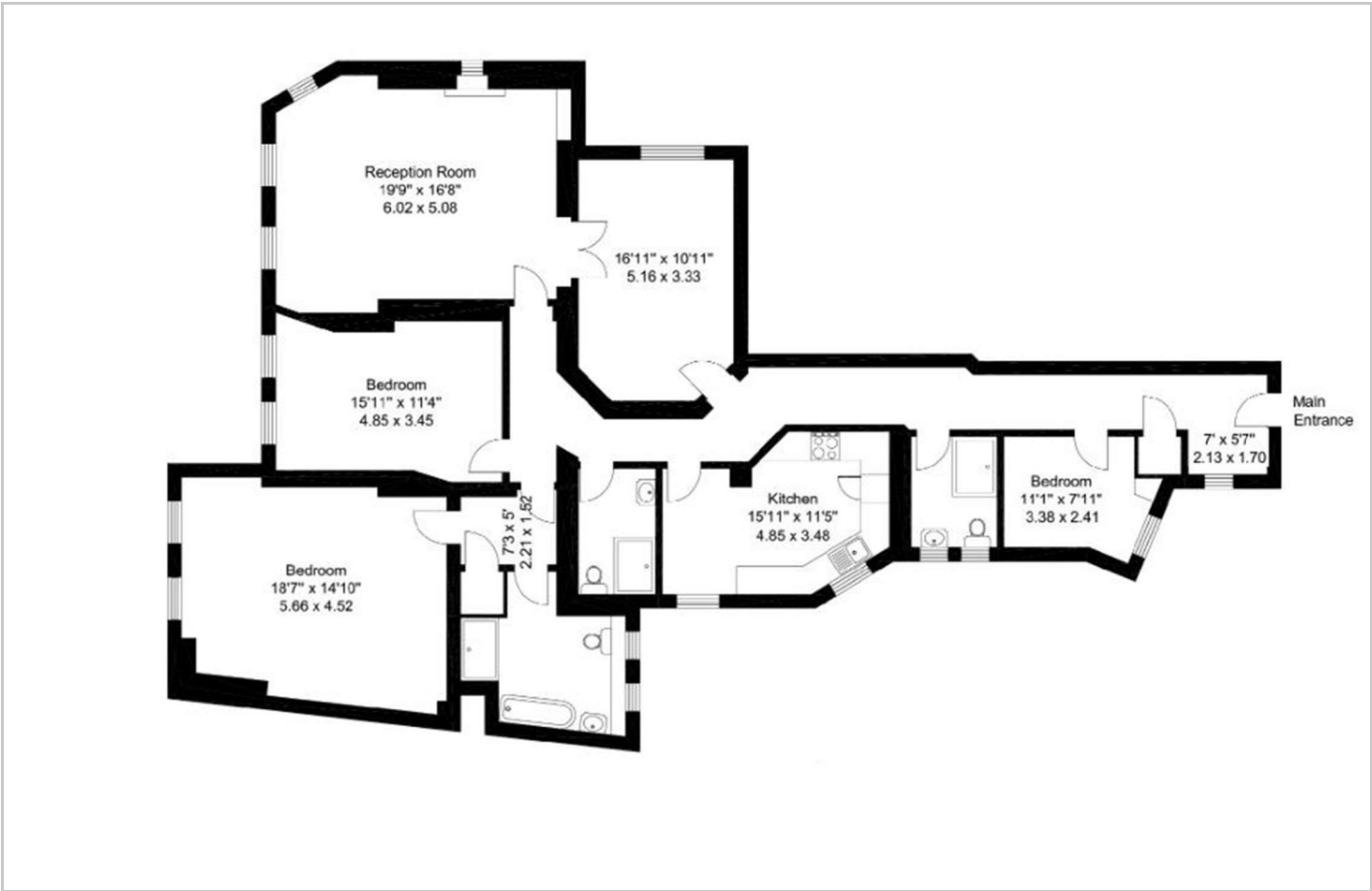
An exceptional three bedroom family apartment situated on the fourth floor of a desirable portered mansion block in Maida Vale. This superb property has undergone refurbishment throughout and offers in excess of 1800 sq ft of living and entertainment space. The flat comprises two large reception rooms, separate fully fitted kitchen with modern appliances, principal bedroom with en-suite bathroom, two further bedrooms and two shower rooms. Clive Court is ideally positioned for all the shops, cafes and restaurants on Clifton Road and Elgin Avenue and is 0.5 miles from Warwick Avenue and 0.4 miles from Maida Vale Underground stations both of which are on the Bakerloo line. Paddington station is also within easy reach, offering Circle, District, Bakerloo and Hammersmith & City lines together with National Rail services and the Heathrow Express providing access to Heathrow Airport in 15 minutes.

- Three bedrooms
- Two shower rooms
- Fully fitted kitchen
- En-suite bathroom
- Two reception rooms
- Portered mansion block

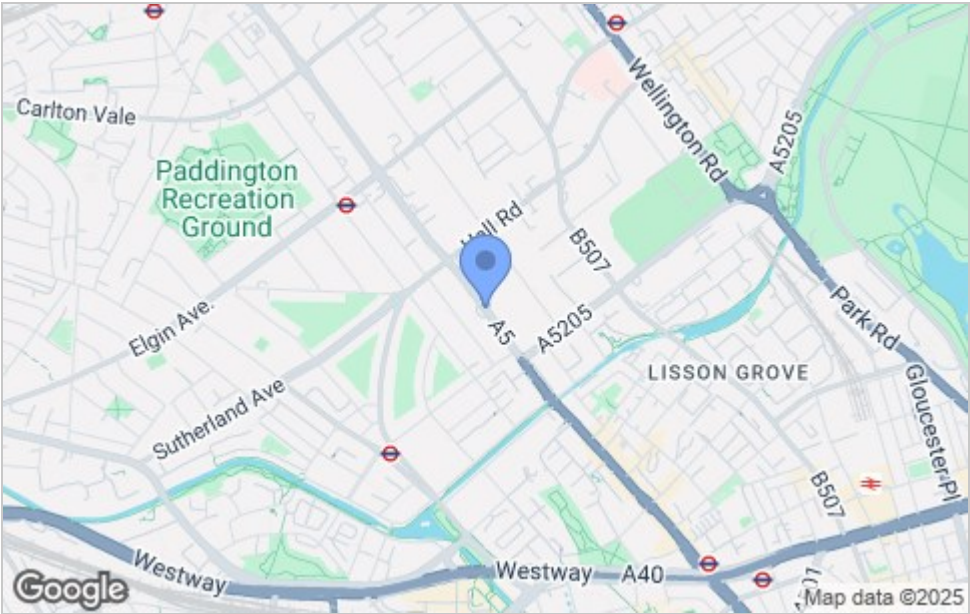




Floor Plan



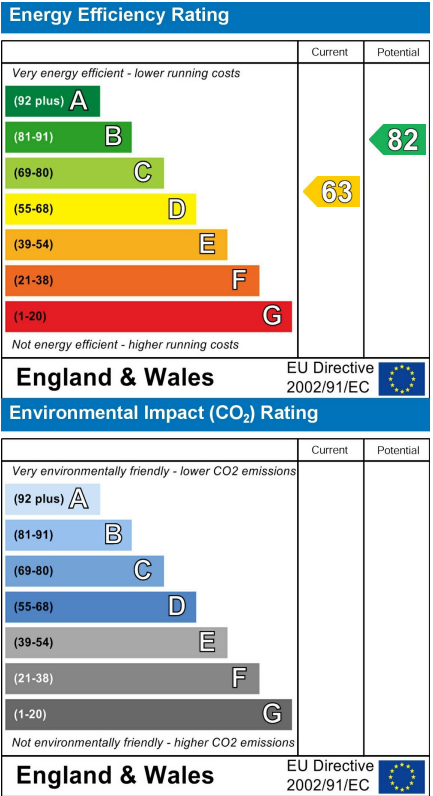
Area Map



Viewing

Please contact our Lettings Team on 020 7046 6276 if you wish to arrange a viewing appointment for this property or require further information.

Energy Efficiency Graph



These particulars, whilst believed to be accurate are set out as a general outline only for guidance and do not constitute any part of an offer or contract. Intending purchasers should not rely on them as statements of representation of fact, but must satisfy themselves by inspection or otherwise as to their accuracy. No person in this firm's employment has the authority to make or give any representation or warranty in respect of the property.

020 7046 6276 • lettings@charmillresidential.co.uk • 51 Maida Vale, Little Venice, London W9 1SD
charmillresidential.co.uk