

CHARMILL

RESIDENTIAL



Bingham Place, Marylebone W1
£7,000



5 Bingham Place, London, W1U 5AX

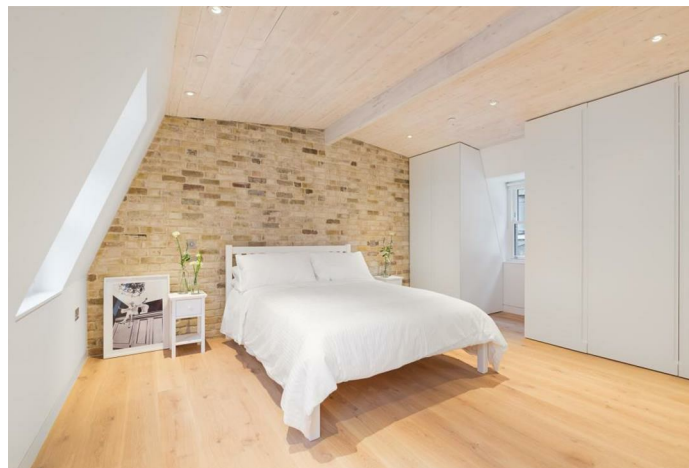
£7,000

A stunning three-bedroom mews house located on a quiet cobbled mews behind the fashionable Marylebone High Street. The property has been interior designed throughout and comprises three/four bedrooms, four bathrooms, two reception rooms and a spacious kitchen/dining room. The house further benefits from having a private roof terrace, exposed brickwork, and wooden flooring. The property is located within walking distance to both Baker Street and Regents Park Station.

Description



Situation



Not specified

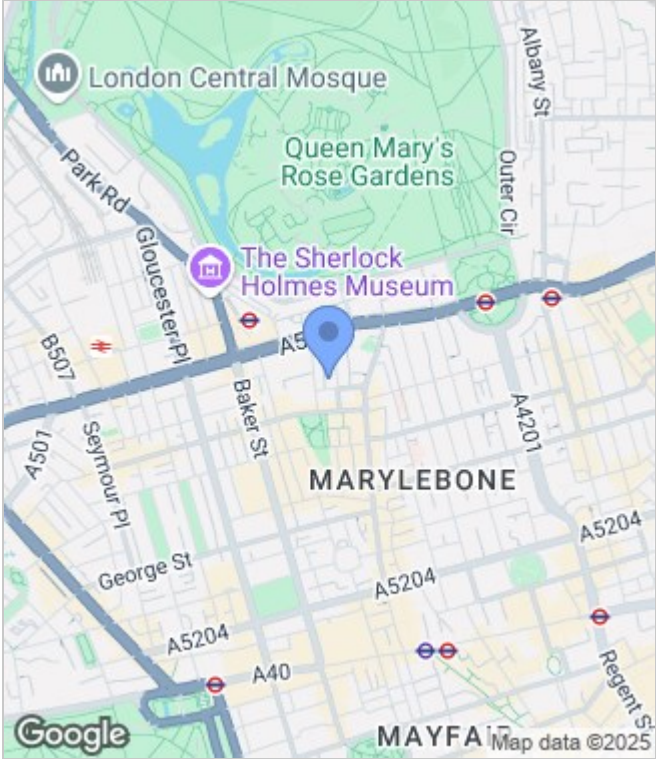
Council Tax Band:

Available: 7th August 2025

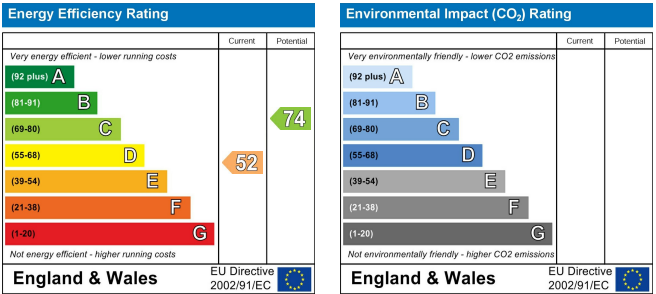
Floor Plans



Area Map



Energy Performance Graph



These particulars, whilst believed to be accurate are set out as a general outline only for guidance and do not constitute any part of an offer or contract. Intending purchasers should not rely on them as statements of representation of fact, but must satisfy themselves by inspection or otherwise as to their accuracy. No person in this firm's employment has the authority to make or give any representation or warranty in respect of the property.

