

CHARMILL

RESIDENTIAL

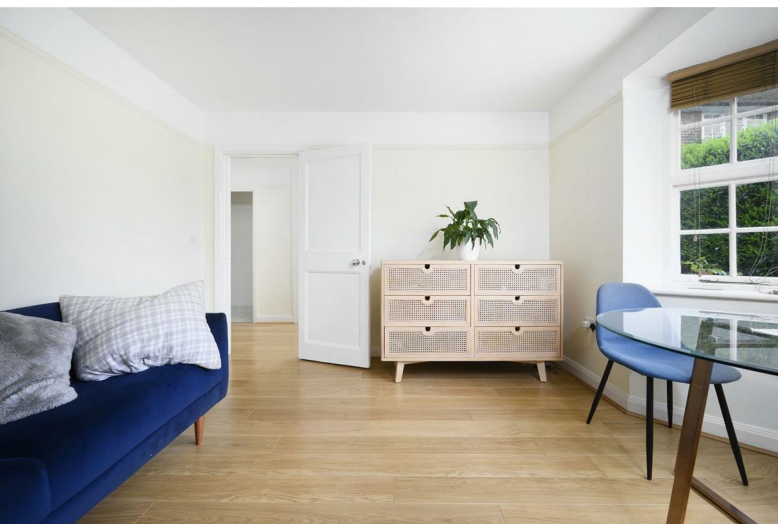


Hill Top, Hampstead Garden Suburb, NW11

£435



Hill Top

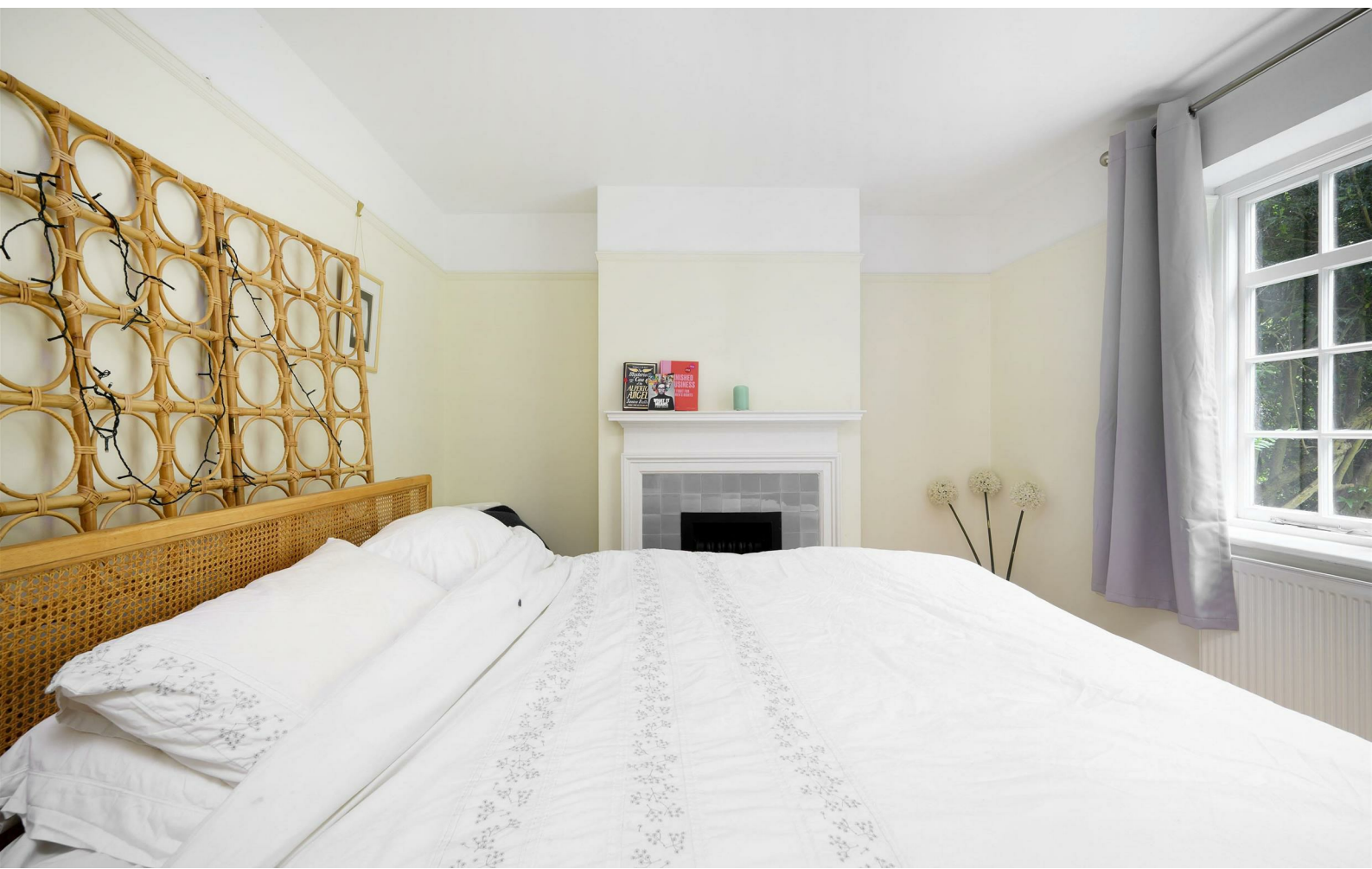


Description

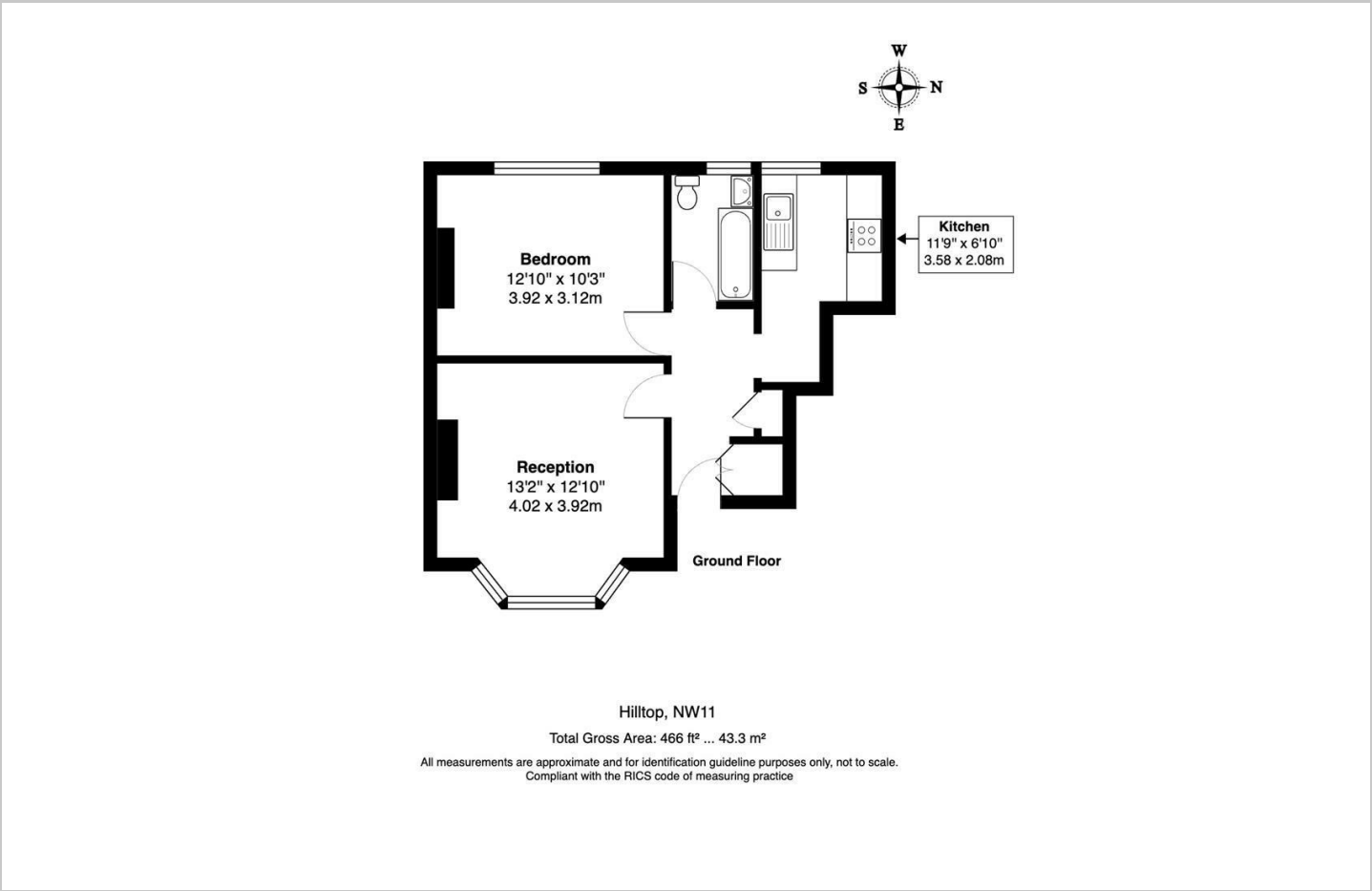
A charming one-bedroom apartment arranged on the ground floor of a period conversion on Hill Top, NW11. The property is offered in excellent condition throughout comprising a reception/dining room with wooden flooring, generously proportioned double bedroom, separate fitted kitchen, and a fully tiled bathroom suite. The apartment further benefits from a private garden as well as access to a communal front garden.

- One bedroom
- Wooden Flooring
- Unfurnished
- Private Garden
- Separate Kitchen

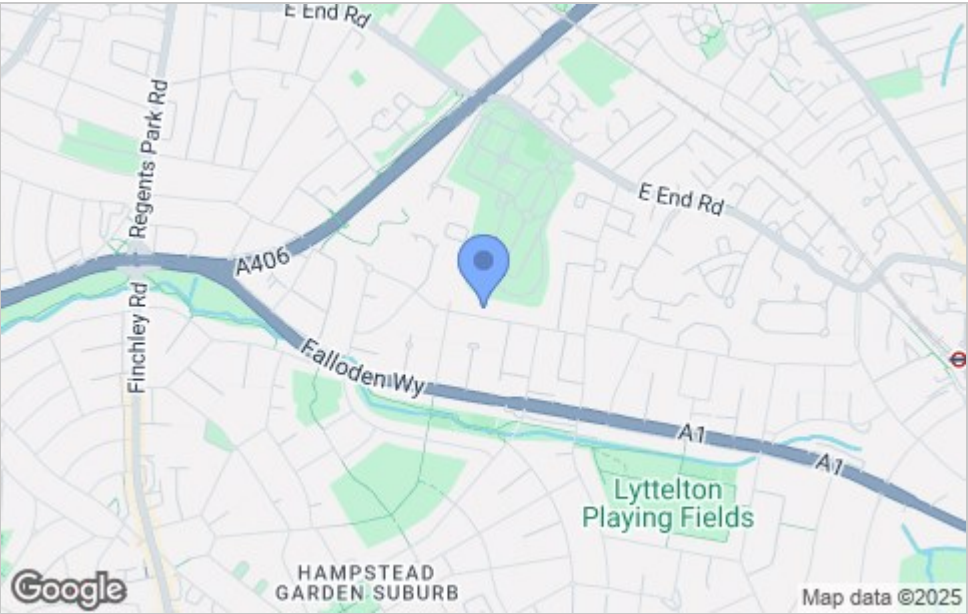




Floor Plan



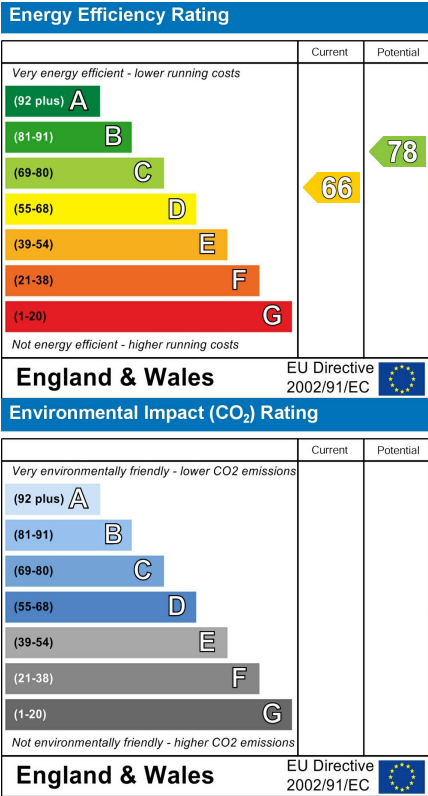
Area Map



Viewing

Please contact us on 020 7046 6275 if you wish to arrange a viewing appointment for this property or require further information.

Energy Efficiency Graph



These particulars, whilst believed to be accurate are set out as a general outline only for guidance and do not constitute any part of an offer or contract. Intending purchasers should not rely on them as statements of representation of fact, but must satisfy themselves by inspection or otherwise as to their accuracy. No person in this firms employment has the authority to make or give any representation or warranty in respect of the property.

020 7046 6275 • sales@charmillresidential.co.uk • 51 Maida Vale, Little Venice, London W9 1SD
charmillresidential.co.uk