

CHARMILL

RESIDENTIAL



Northwick Terrace, St Johns Wood, NW8

£530

A bright and spacious one bedroom apartment situated on the second floor of a portered mansion block located on Northwick Terrace. This property comprises a double bedroom with a built in wardrobe, a large reception/dining room, separate fitted kitchen and a bathroom suite. Further benefits include a communal garden & an on-site porter. Clifton Court is conveniently located moments from the cafes, shops and restaurants on both Edgware Road and St Johns Wood Road. Warwick Avenue Underground station (Bakerloo line) is 0.4 miles away and Edgware Road Underground station (Bakerloo, Circle, District, Hammersmith & City lines) is just 0.7 miles away.

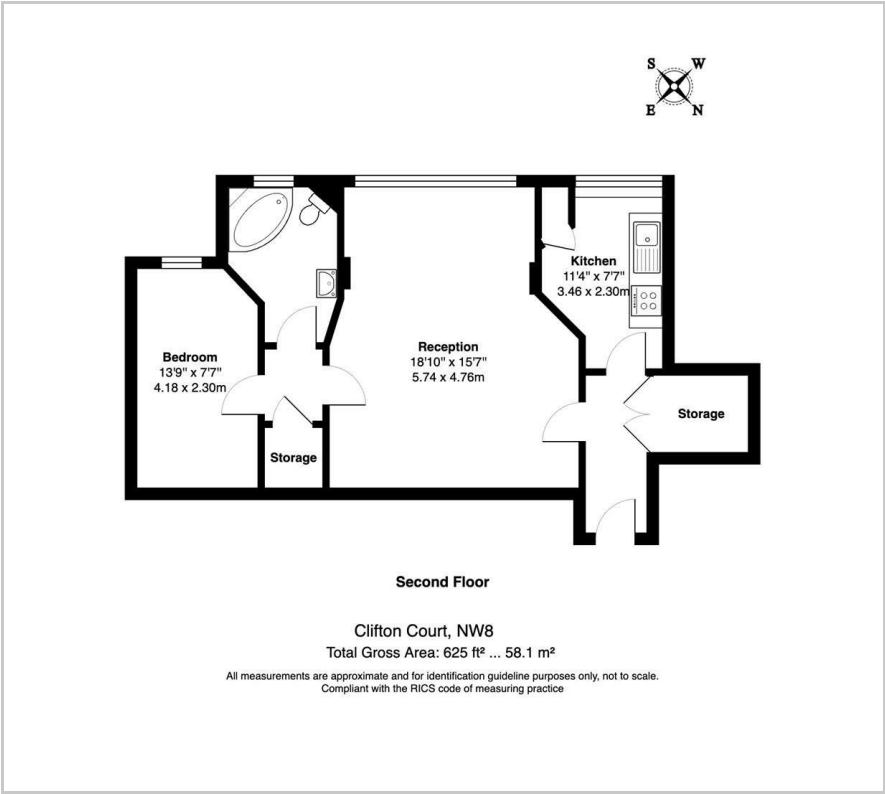
- Second floor
- One bedroom
- Communal Gardens
- Porter
- Double glazing
- Heating & Hotwater included
- Purpose built block

Viewing

Please contact us on 020 7046 6276 if you wish to arrange a viewing appointment for this property or require further information.



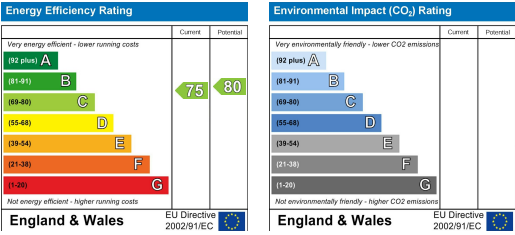
Floor Plan



Area Map



Energy Efficiency Graph



These particulars, whilst believed to be accurate are set out as a general outline only for guidance and do not constitute any part of an offer or contract. Intending purchasers should not rely on them as statements of representation of fact, but must satisfy themselves by inspection or otherwise as to their accuracy. No person in this firm's employment has the authority to make or give any representation or warranty in respect of the property.

020 7046 6276 • lettings@charmillresidential.co.uk • 51 Maida Vale, Little Venice, London W9 1SD
charmillresidential.co.uk