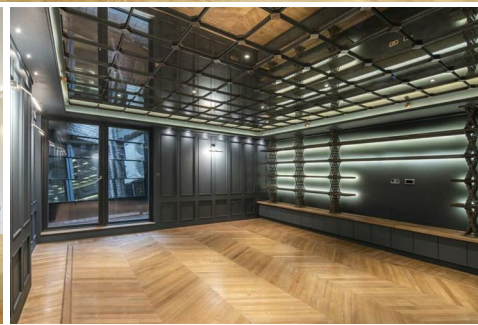


CHARMILL

RESIDENTIAL



Belmont Street, Camden NW1


A beautiful town house, located within the Chappell Lofts development in the heart of Camden. This stunning house is arranged over four floors and comprises four double bedrooms all with air conditioning, underfloor heating and en-suite bathrooms. This stunning home further benefits from a fully fitted kitchen/dining room with Bora and Miele appliances, spacious reception room with wooden flooring and a separate guest cloakroom. The Chappell Lofts site was founded in 1811 by Chappell & Co providing pianos for nobility, gentry and musicians with clients including Beethoven, Strauss and Sibelius. For over 100 years Chappell and Co crafted the world's finest pianos, and during World War 2 produced canopies and propellers for the legendary Supermarine Spitfires, eventually closing in 1970.

Ferdinand Street is ideally positioned moments away from the fashionable shops, restaurants and cafes of vibrant Camden together with the famous Camden Market as well as the green open spaces of Regent's Park and Primrose Hill. Chalk Farm station (Northern line) is just 0.3 miles away and Camden Road station (London Overground) is 0.6 miles away.

- Four bedrooms
- Four bathrooms
- Underfloor heating
- Mews House
- Balcony

£1,850



Energy Efficiency Rating		Current	Potential
Very energy efficient - lower running costs			
(92 plus) A			
(81-91) B			
(69-80) C			
(55-68) D			
(39-54) E			
(21-38) F			
(1-20) G			
Not energy efficient - higher running costs			
England & Wales		73	81
		EU Directive 2002/91/EC	

Environmental Impact (CO ₂) Rating		Current	Potential
Very environmentally friendly - lower CO ₂ emissions			
(92 plus) A			
(81-91) B			
(69-80) C			
(55-68) D			
(39-54) E			
(21-38) F			
(1-20) G			
Not environmentally friendly - higher CO ₂ emissions			
England & Wales		EU Directive 2002/91/EC	