

CHARMILL

RESIDENTIAL

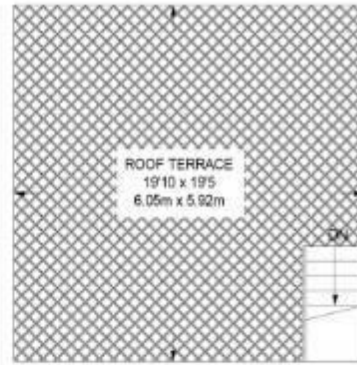


Great Titchfield Street, London, W1W

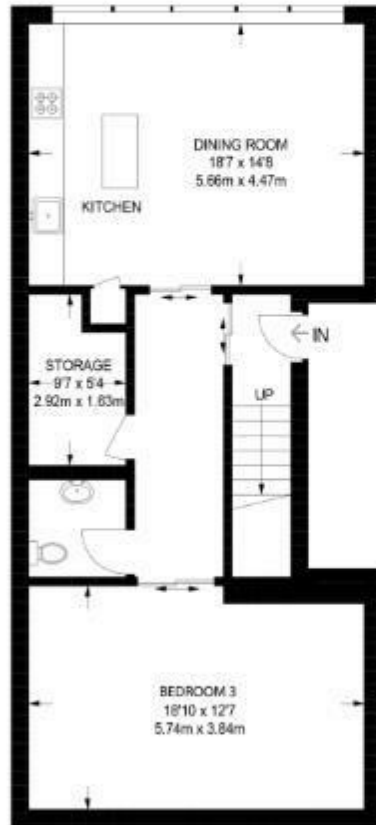
A stunning architect-designed two-bedroom apartment located in the heart of Fitzrovia. This third & fourth floor property comprises of two bedrooms, two bathrooms, a spacious fully fitted kitchen, separate reception room and a private roof terrace. Further benefits include underfloor heating, luxury stylish furnishings and fittings, reclaimed timber, Crittal windows and exposed brickwork. This apartment is in excellent decorative order. Great Titchfield Street is just 0.4 miles from both Great Portland Street (Hammersmith & City, Circle and Metropolitan lines) and Goodge Street (Northern Line).

- Two bedrooms
- Two bathrooms
- Private Roof Terrace
- Excellent condition
- Fully fitted kitchen
- Loft style apartment

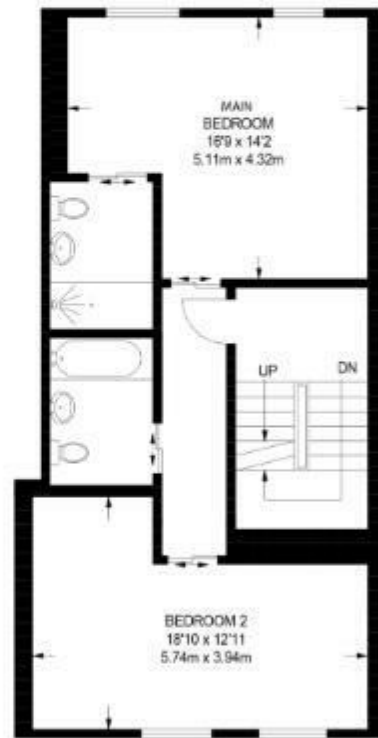
£2,750



FIFTH FLOOR



THIRD FLOOR
748 SQ FT / 69.5 SQ M



FOURTH FLOOR
707 SQ FT / 65.7 SQ M

APPROXIMATE GROSS INTERNAL AREA
1455 SQ FT / 135.2 SQ M

Energy Efficiency Rating		Current	Potential
Very energy efficient - lower running costs			
(92 plus) A			
(81-91) B			
(69-80) C			
(55-68) D			
(39-54) E			
(21-38) F			
(1-20) G			
Not energy efficient - higher running costs			
England & Wales		76	
		EU Directive 2002/91/EC	

Environmental Impact (CO ₂) Rating		Current	Potential
Very environmentally friendly - lower CO ₂ emissions			
(92 plus) A			
(81-91) B			
(69-80) C			
(55-68) D			
(39-54) E			
(21-38) F			
(1-20) G			
Not environmentally friendly - higher CO ₂ emissions			
England & Wales			
		EU Directive 2002/91/EC	

