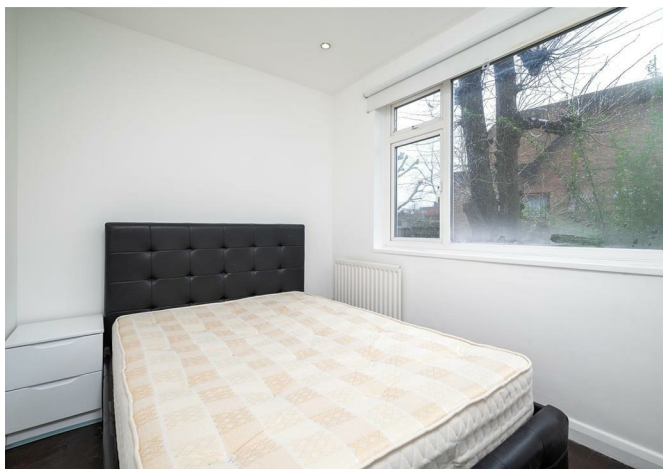
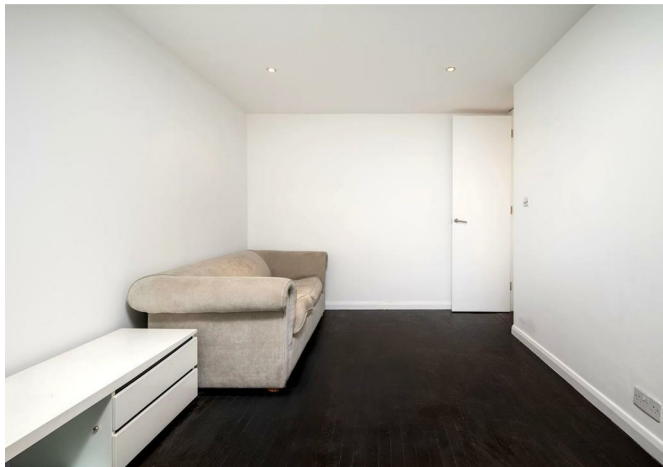


CHARMILL

RESIDENTIAL



Prince Of Wales Road, Kentish Town NW5
£375,000 Share of Freehold

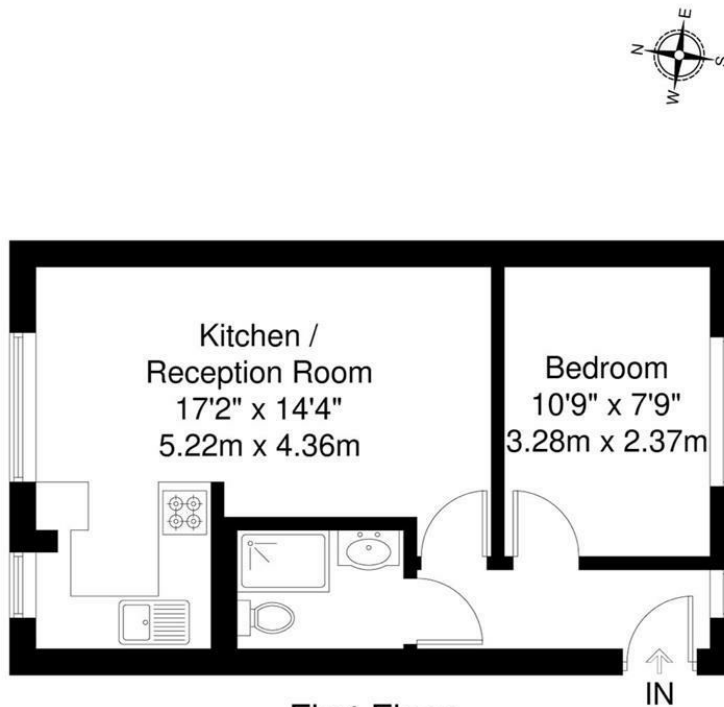


Situated on the first floor of a small purpose built block is this well-proportioned one bedroom apartment. The property comprises an 17 ft open plan kitchen/reception room with large windows which flood the room with natural light, a double bedroom and a shower room.

Vanbern House located opposite the green open space of Talacre Park and is just a short walk away from Kentish Town Road which offers a vast array of shops, cafes and restaurants. Kentish Town West station (London Overground) and Kentish Town station (Northern line and Thameslink) are 0.1 miles and 0.6 miles away respectively.



Floor Plan



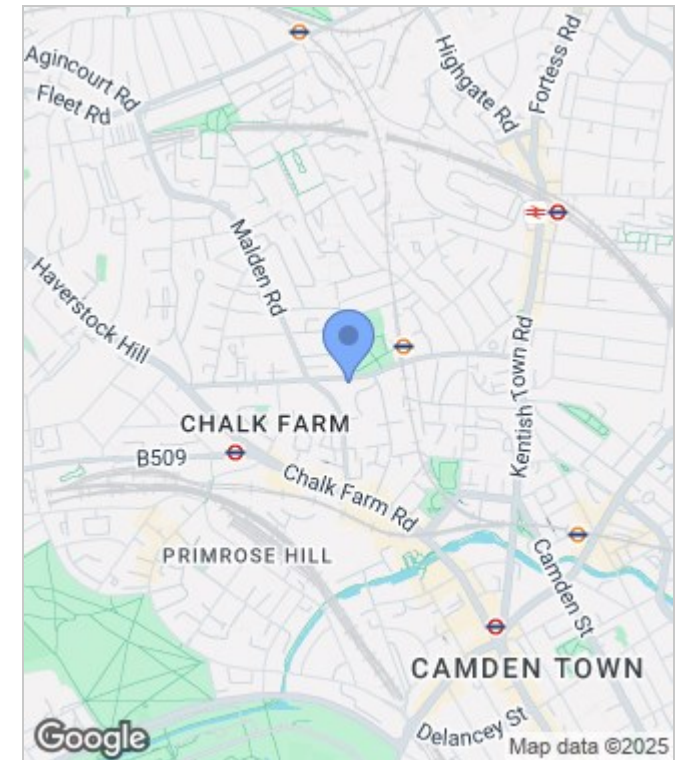
First Floor

Vanbern House, Kentish Town, NW5

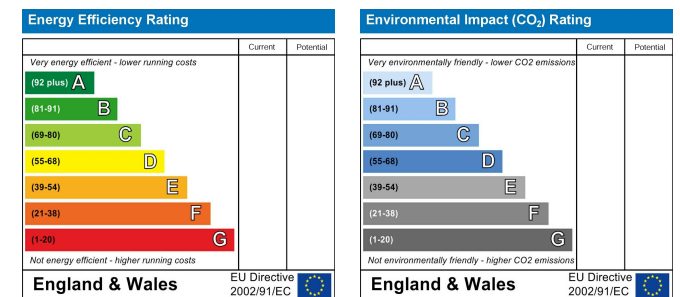
Total Gross Internal Area = 35.9 sq m / 386 sq ft

All Measurements are approximate and for identification guideline purposes only, not to scale.
Compliant with the RICS code of measuring practice

Area Map



Energy Performance Graph



These particulars, whilst believed to be accurate are set out as a general outline only for guidance and do not constitute any part of an offer or contract. Intending purchasers should not rely on them as statements of representation of fact, but must satisfy themselves by inspection or otherwise as to their accuracy. No person in this firm's employment has the authority to make or give any representation or warranty in respect of the property.



020 7046 6275 • sales@charmillresidential.co.uk • 51 Maida Vale, Little Venice, London W9 1SD
charmillresidential.co.uk