

# CHARMILL

## RESIDENTIAL



### Randolph Avenue, Little Venice, W9

£3,950 + VAT per week. Up to 3 months.  
£3,550 + VAT per week for commitment of 12 month let.

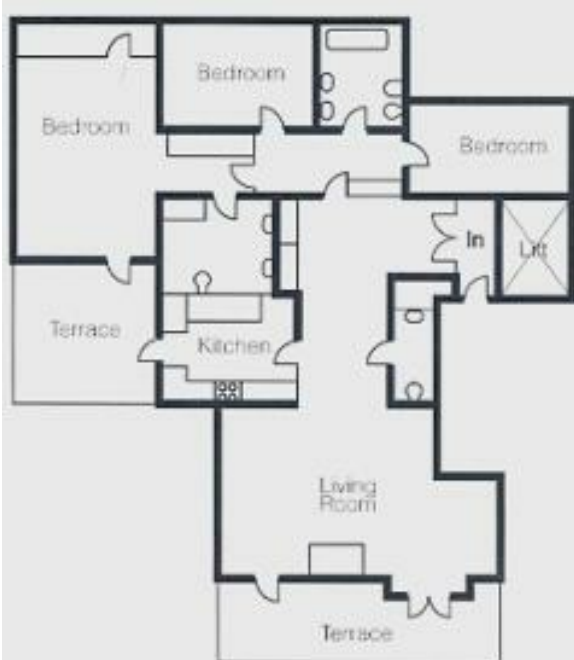
Situated on the top floor and offering stunning views of the beautifully manicured communal garden. Europa House's recently refurbished three-Bedroom Penthouse (1646 SQ FT / 153 SQ M) is directly accessible by a lift. The luxuriously large, open living and dining area offers access to a tranquil terrace.

#### RATES INCLUDE:

- ALL UTILITIES AND COUNCIL TAX.
- HIGH-SPEED WIRELESS BROADBAND.
- 24 HOUR CCTV.
- DEDICATED CONCIERGE SERVICE.
- HOUSEKEEPING SERVICE.
- WELCOME PROVISIONS ON ARRIVAL
- VAT DROPS FROM 20% TO 4% AFTER 28 NIGHTS IN-HOUSE

**£3,827**

- ALL UTILITIES AND COUNCIL TAX INCLUDED
- HIGH-SPEED WIRELESS BROADBAND.
- 24 HOUR CCTV.
- DEDICATED CONCIERGE SERVICE.
- HOUSEKEEPING SERVICE.
- WELCOME PROVISIONS ON ARRIVAL
- VAT DROPS FROM 20% TO 4% AFTER 28 NIGHTS IN-HOUSE.
- PARKING AVAILABLE
- ACCESS TO A COMMUNAL GARDEN



### THREE BEDROOM PENTHOUSE

#### FOURTH FLOOR

1646 SQ FT / 153 SQ M

Please note that this is a sample floor plan and actual room layout may vary

| Energy Efficiency Rating                    |         |           |
|---|---------|-----------|
|   | Current | Potential |
| Very energy efficient - lower running costs |         |           |
| (92 plus) A                                 |         |           |
| (81-91) B                                   |         |           |
| (69-80) C                                   |         |           |
| (55-68) D                                   |         |           |
| (39-54) E                                   |         |           |
| (21-38) F                                   |         |           |
| (1-20) G                                    |         |           |
| Not energy efficient - higher running costs |         |           |
| England & Wales                             |         |           |
| EU Directive 2002/91/EC                     |         |           |

| Environmental Impact (CO <sub>2</sub> ) Rating                  |         |           |
|---|---------|-----------|
|   | Current | Potential |
| Very environmentally friendly - lower CO <sub>2</sub> emissions |         |           |
| (92 plus) A   |         |           |
| (81-91) B   |         |           |
| (69-80) C   |         |           |
| (55-68) D   |         |           |
| (39-54) E   |         |           |
| (21-38) F   |         |           |
| (1-20) G  |         |           |
| Not environmentally friendly - higher CO <sub>2</sub> emissions |         |           |
| England & Wales   |         |           |
| EU Directive 2002/91/EC   |         |           |

