

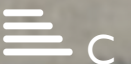
CHARMILL

RESIDENTIAL



Randolph Avenue, Little Venice, W9

£5,600



Randolph Avenue



Description

December 2024 rates: £925+VAT per night (SHORT TERM)
January 2025 rates: £825+VAT per night (For long stays 90+ nights)

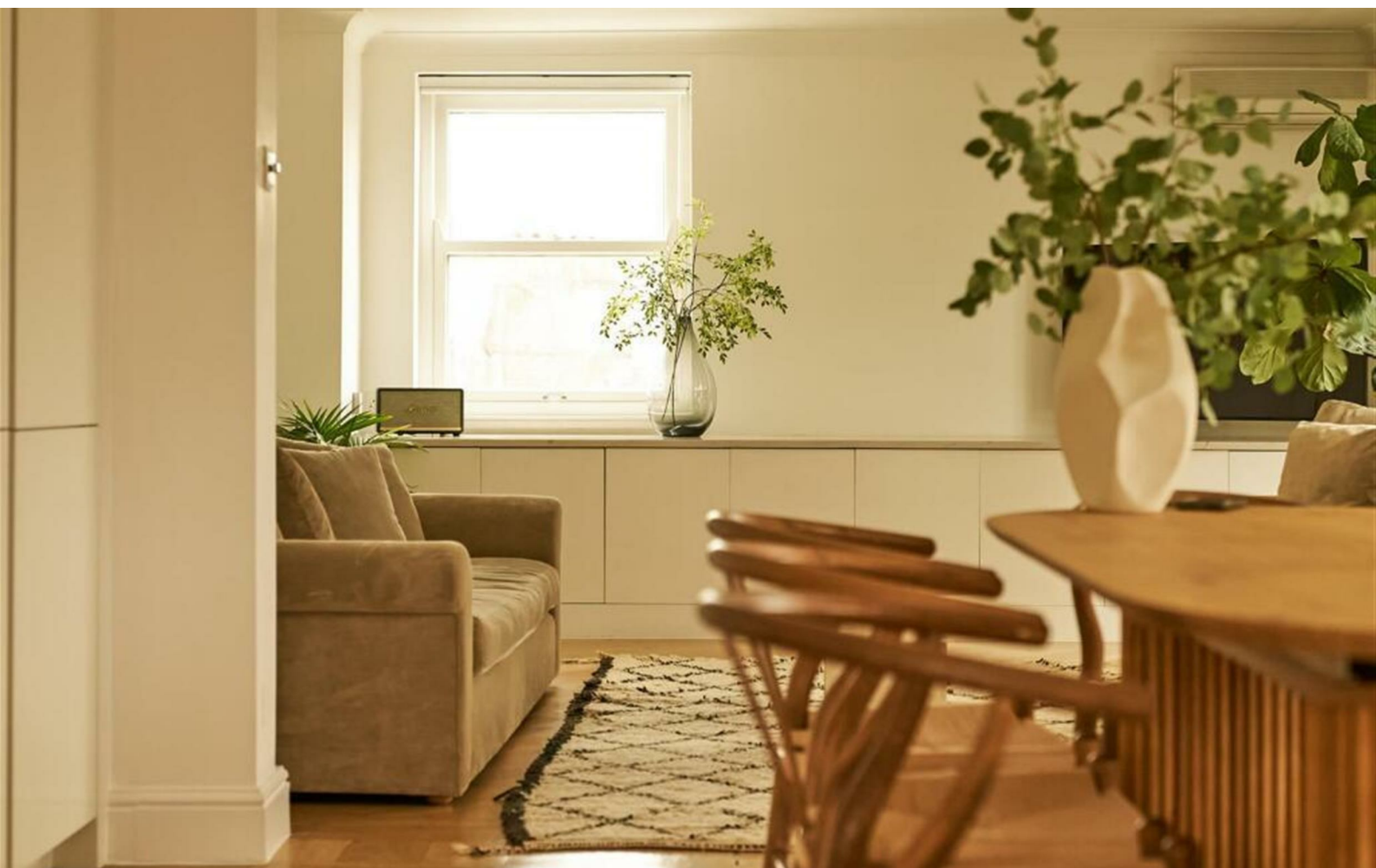
Situated on the top floor and offering stunning views of the beautifully manicured communal garden, Europa House's recently refurbished Four-Bedroom Penthouse (2,320 SQ FT / 215.5 SQ M) is directly accessible by a lift. The luxuriously large, open living and dining area offers access to a tranquil terrace.

RATES INCLUDE:

- ALL UTILITIES AND COUNCIL TAX.
- HIGH-SPEED WIRELESS BROADBAND.
- 24 HOUR CCTV.
- DEDICATED CONCIERGE SERVICE.
- HOUSEKEEPING SERVICE.
- WELCOME PROVISIONS ON ARRIVAL
- VAT DROPS FROM 20% TO 4% AFTER 28 NIGHTS IN-HOUSE

- ALL UTILITIES AND COUNCIL TAX INCLUDED
- 24 HOUR CCTV.
- HOUSEKEEPING SERVICE.
- VAT DROPS FROM 20% TO 4% AFTER 28 NIGHTS IN-HOUSE
- ACCESS TO COMMUNAL GARDENS
- HIGH-SPEED WIRELESS BROADBAND.
- DEDICATED CONCIERGE SERVICE
- WELCOME PROVISIONS ON ARRIVAL
- PARKING AVAILABLE

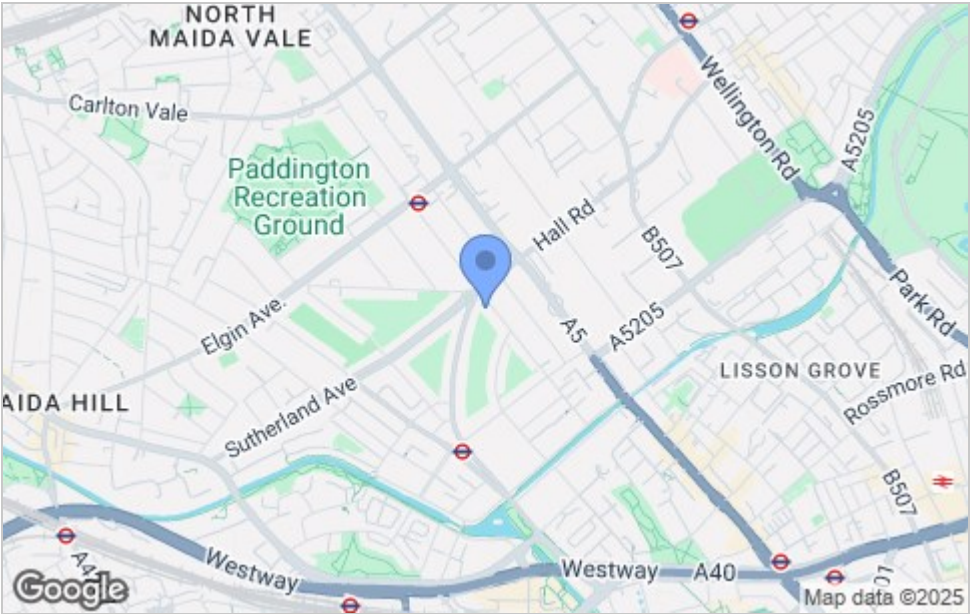




Floor Plan



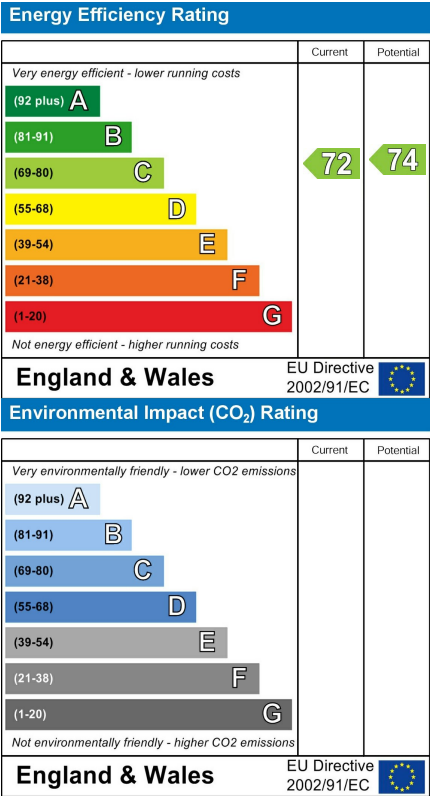
Area Map



Viewing

Please contact us on 020 7046 6275 if you wish to arrange a viewing appointment for this property or require further information.

Energy Efficiency Graph



These particulars, whilst believed to be accurate are set out as a general outline only for guidance and do not constitute any part of an offer or contract. Intending purchasers should not rely on them as statements of representation of fact, but must satisfy themselves by inspection or otherwise as to their accuracy. No person in this firm's employment has the authority to make or give any representation or warranty in respect of the property.

020 7046 6275 • sales@charmillresidential.co.uk • 51 Maida Vale, Little Venice, London W9 1SD
charmillresidential.co.uk