

CHARMILL

RESIDENTIAL



Oval Road, Primrose Hill NW1

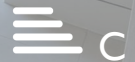
£950

A stylish two bedroom apartment set within a secure apartment block situated moments from Primrose Hill and Regent's Park. This stunning property comprises a principal bedroom, open plan living room with fully fitted kitchen, further bedroom and two modern bathroom-suites. The apartment further benefits from a walk-in dressing room and is finished to a very high standard throughout. Latitude House is located close to all the shops, restaurants and cafes of Primrose Hill village together with Primrose Hill itself where unrivalled views of London's skyline can be enjoyed. The vast array of amenities of Camden Town, the famous Camden Market as well as the green open spaces of Regent's Park are all just a short stroll away. Camden Town Underground station (Northern line) is just 0.3 miles away and 0.5 miles away you will find Mornington Crescent Underground station (Northern line).

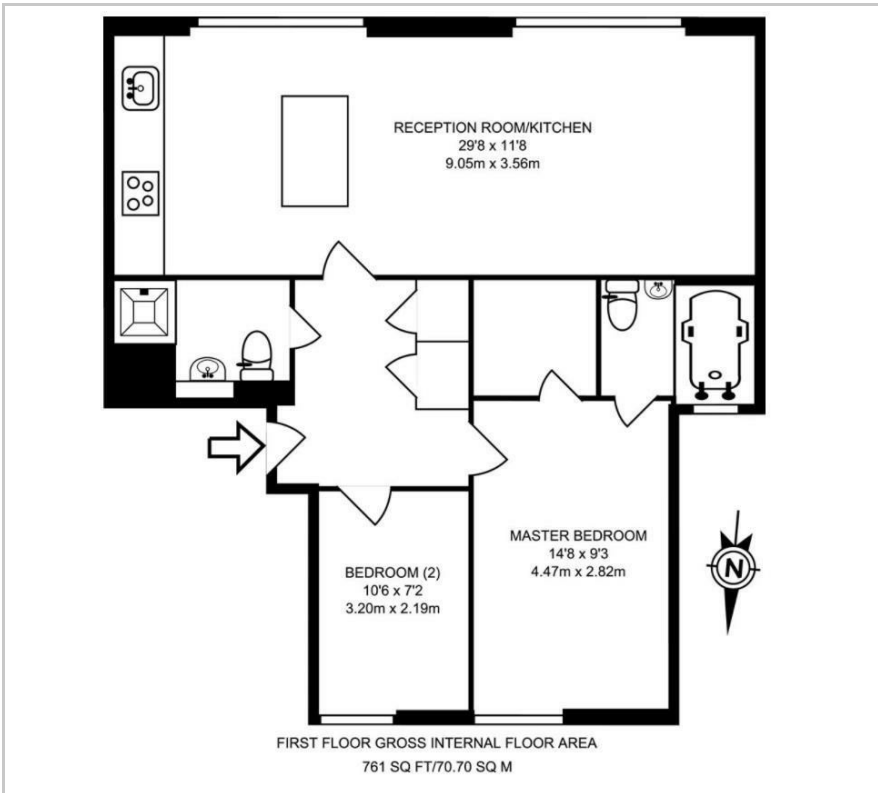
- Two bedrooms
- Open plan kitchen/reception room
- Two bathrooms
- Walk-in dressing room
- Floor to ceiling windows

Viewing

Please contact us on 020 7046 6276 if you wish to arrange a viewing appointment for this property or require further information.



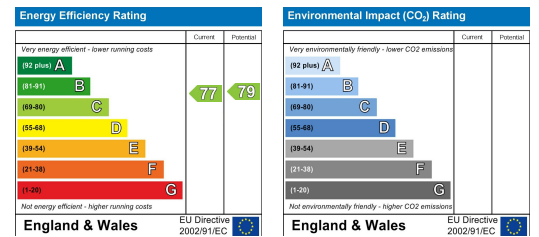
Floor Plan



Area Map



Energy Efficiency Graph



These particulars, whilst believed to be accurate are set out as a general outline only for guidance and do not constitute any part of an offer or contract. Intending purchasers should not rely on them as statements of representation of fact, but must satisfy themselves by inspection or otherwise as to their accuracy. No person in this firm's employment has the authority to make or give any representation or warranty in respect of the property.

020 7046 6276 • lettings@charmillresidential.co.uk • 51 Maida Vale, Little Venice, London W9 1SD
charmillresidential.co.uk