

CHARMILL

RESIDENTIAL



Shannon Place, St John's Wood NW8

Offers in excess of £450,000



Shannon Place, St John's Wood NW8



Description

Situated on the top floor of this superbly positioned and well maintained purpose built block is this bright one bedroom apartment. Offered in good decorative order throughout, the property comprises a South West facing reception room, a fully fitted kitchen, a double bedroom and a bathroom. Furthermore the apartment benefits from a separate storage cupboard, a communal garden and a day porter.

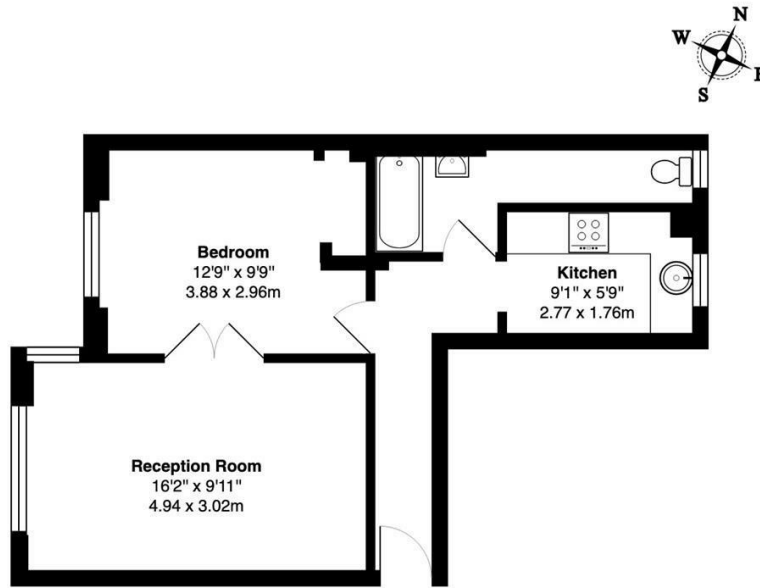
Townshend Court is moments from Primrose Hill, the open spaces Regent's Park and St John's High Street which hosts a vast array of fashionable shops, restaurants and cafes. St John's Wood station (Jubilee line) is just 0.4 miles away.



Shannon Place, St John's Wood NW8



Floor Plan



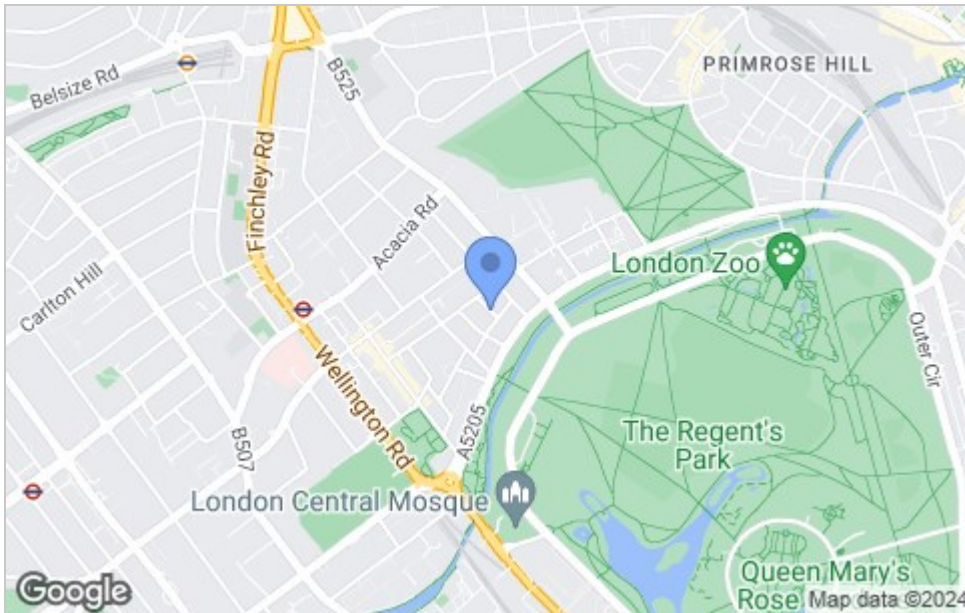
4th Floor

Townshend Court Shannon Place St NW8

Total Gross Area: 473 ft² ... 43.9 m²

All measurements are approximate and for identification guideline purposes only, not to scale.
Compliant with the RICS code of measuring practice

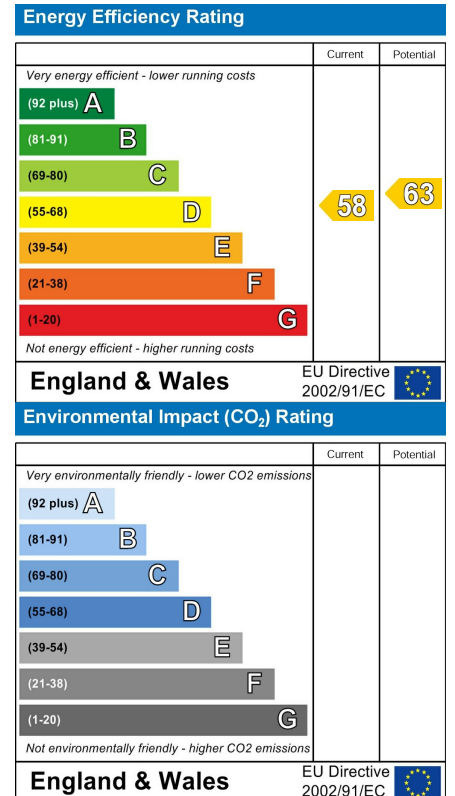
Area Map



Viewings

Please contact us on 020 7046 6275 if you wish to arrange a viewing appointment for this property or require further information.

Energy Efficiency Graph



These particulars, whilst believed to be accurate are set out as a general outline only for guidance and do not constitute any part of an offer or contract. Intending purchasers should not rely on them as statements of representation of fact, but must satisfy themselves by inspection or otherwise as to their accuracy. No person in this firm's employment has the authority to make or give any representation or warranty in respect of the property.

020 7046 6275 • sales@chamillresidential.co.uk • 51 Maida Vale, Little Venice, London W9 1SD
chamillresidential.co.uk