

CHARMILL

RESIDENTIAL



Maida Vale, London W9
£695,000

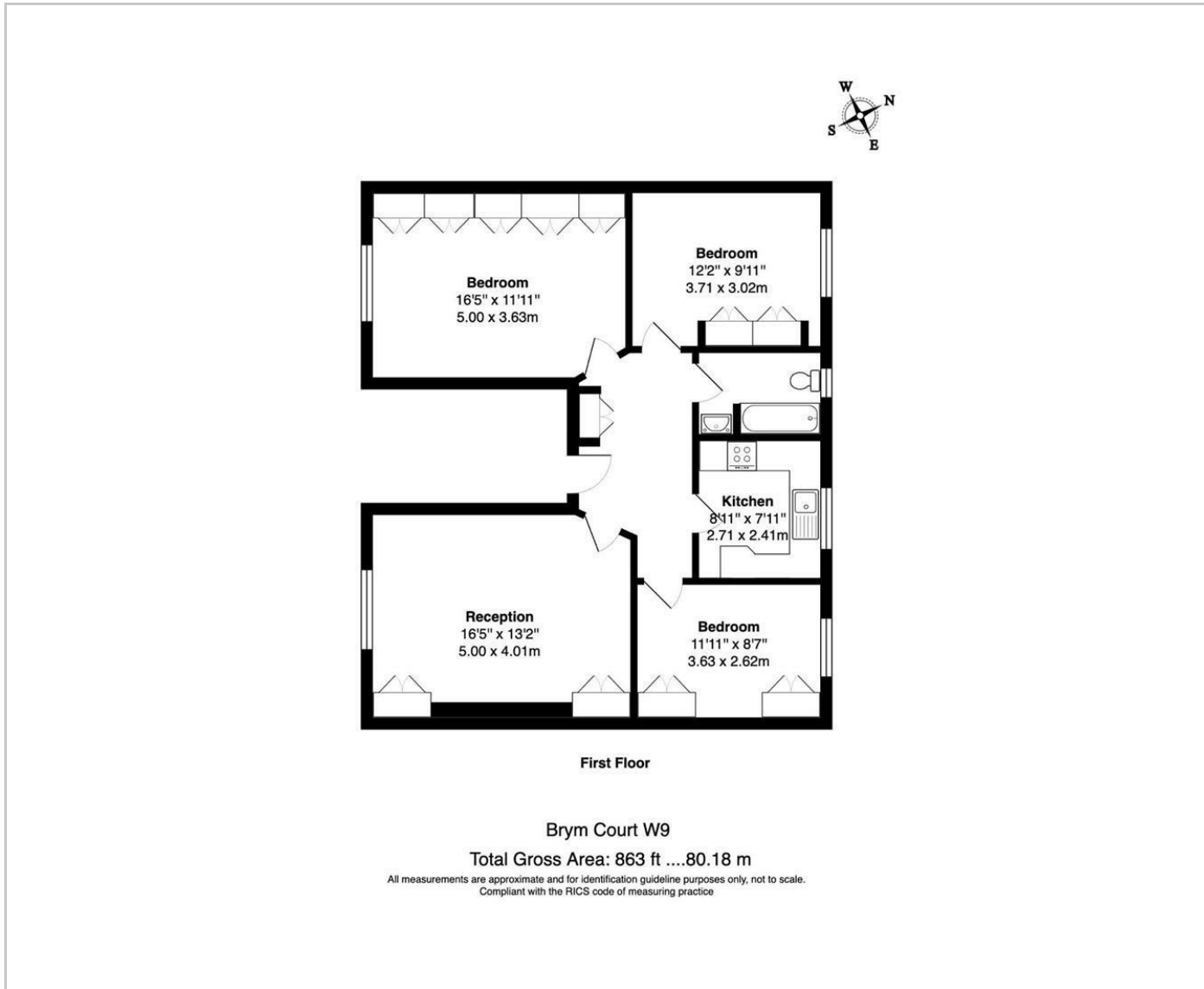


Situated on the first floor of a well maintained block is this bright and spacious three bedroom apartment. The property comprises a 16 ft south-west facing reception room, a separate fully fitted kitchen, three double bedrooms with built-in wardrobes and a family bathroom. Furthermore the apartment benefits from a garage, an allocated off-street parking space and a communal garden.

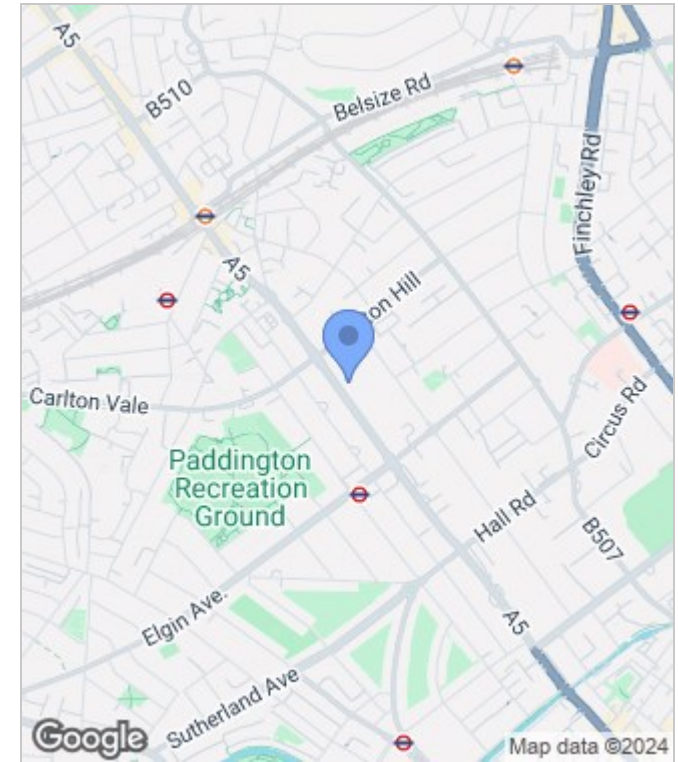
Brym Court is superbly located on Maida Vale moments from all the shops, cafes and restaurants on Elgin Avenue and Lauderdale Parade as well as Paddington Recreation Ground. Maida Vale station (Bakerloo line) is just 0.2 miles away. Paddington station is also within easy reach, offering Circle, District, Bakerloo and Hammersmith & City lines together with National Rail services and the Heathrow Express providing access to Heathrow Airport in 15 minutes as well as the new Elizabeth line connecting you to Canary Wharf in just 18 minutes.



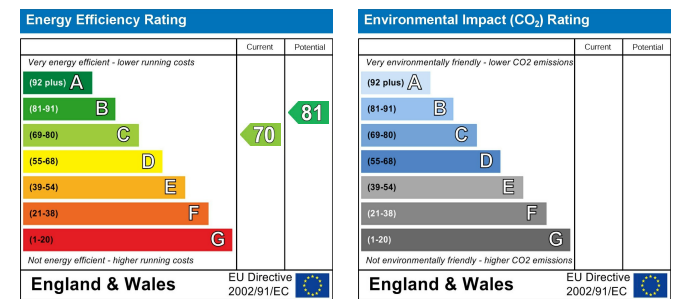
Floor Plan



Area Map



Energy Performance Graph



These particulars, whilst believed to be accurate are set out as a general outline only for guidance and do not constitute any part of an offer or contract. Intending purchasers should not rely on them as statements of representation of fact, but must satisfy themselves by inspection or otherwise as to their accuracy. No person in this firm's employment has the authority to make or give any representation or warranty in respect of the property.

