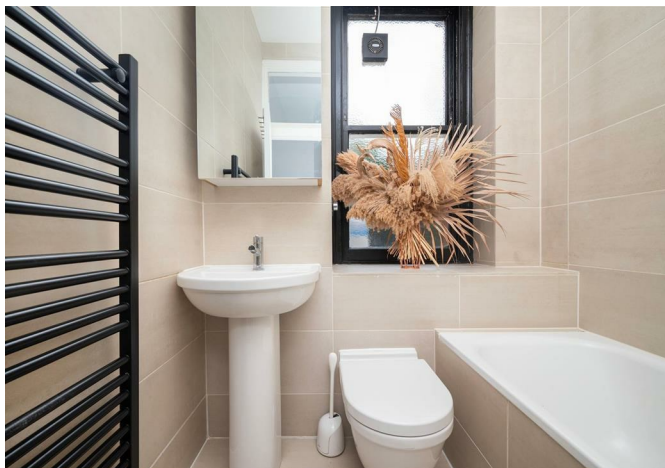
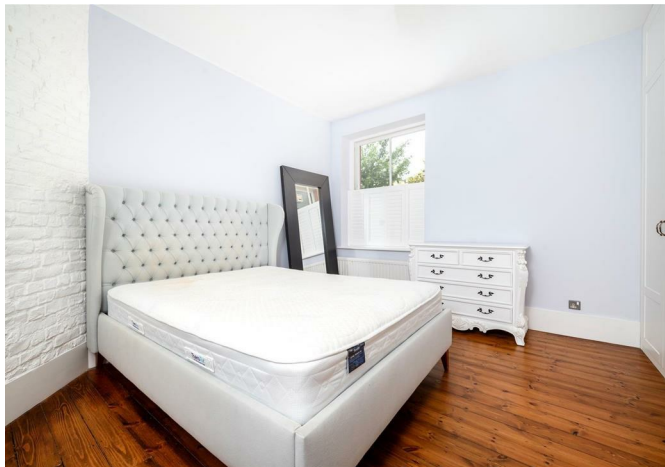


# CHARMILL

RESIDENTIAL



Castellain Road, Maida Vale W9  
£875,000 Share of Freehold

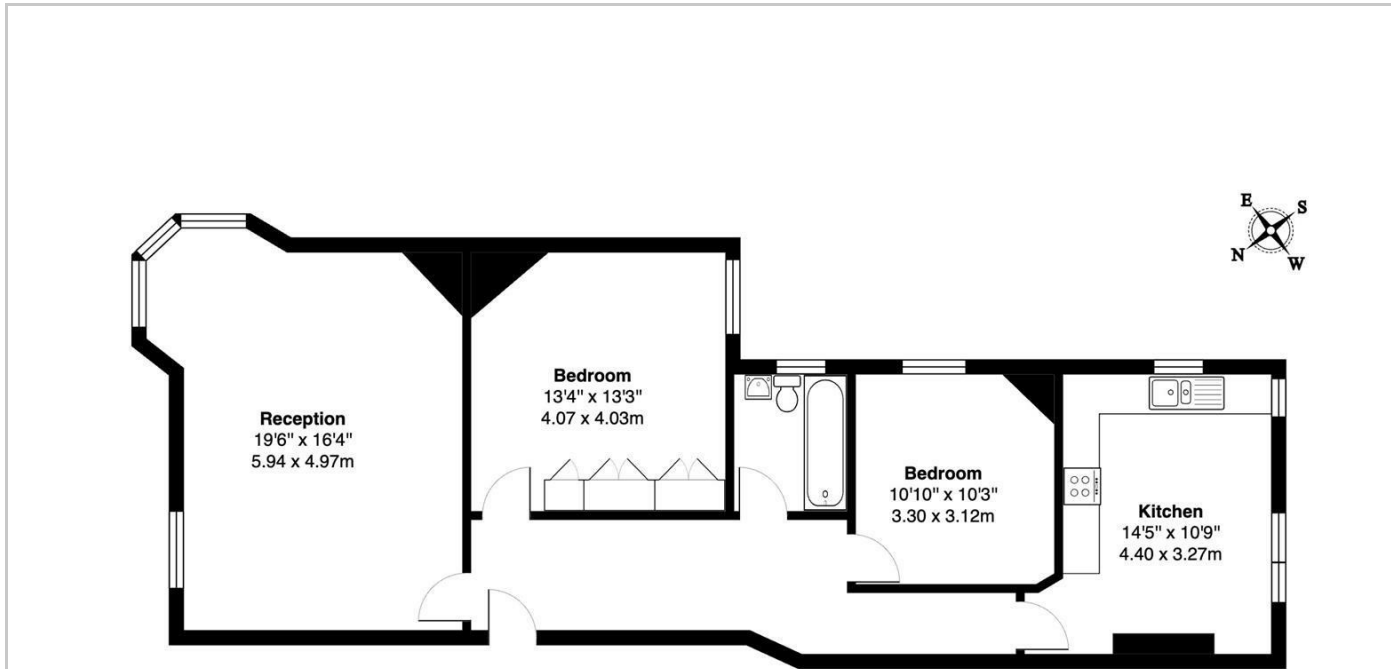


Set on the raised ground floor of this desirable mansion block in the heart of Maida Vale is this spacious two bedroom apartment. This charming property comprises a large reception room with big bay windows which flood the room with natural light, a separate fully fitted eat-in kitchen, two double bedrooms and a family bathroom. The apartment further benefits from high ceilings throughout.

Castellain Mansions is situated on Castellain Road which is an attractive tree-lined residential street located moments from the shops, cafes and restaurants on Lauderdale Road, Formosa Street and Elgin Avenue. The green open spaces of Paddington Recreation Ground is also within easy reach and Warwick Avenue station (Bakerloo line) is just 0.3 miles away.



## Floor Plan

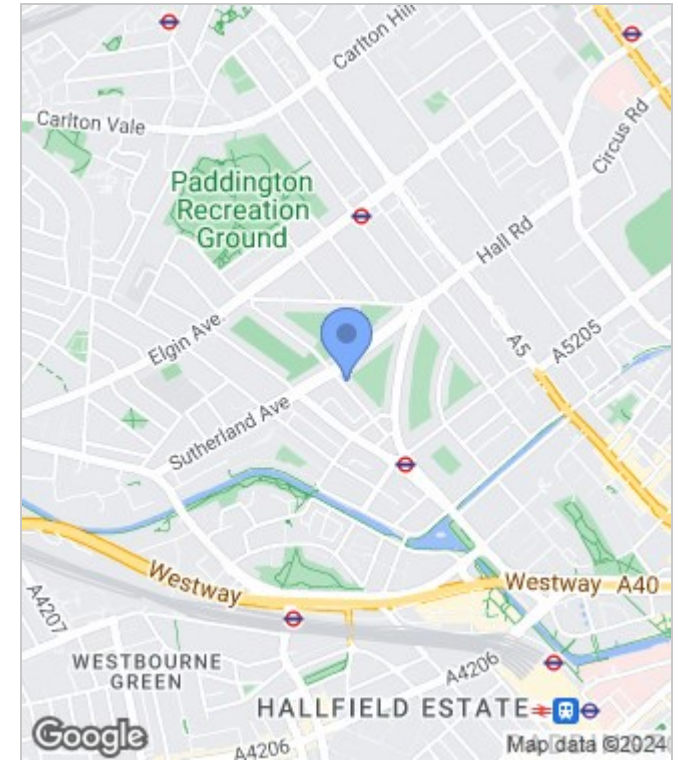


Ground Floor

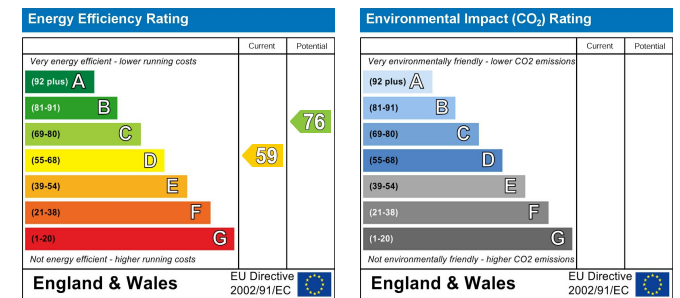
### Castellain Mansions, Castellain Road, W9

Total Gross Area: 948 ft<sup>2</sup> ... 88.0 m<sup>2</sup>  
 All measurements are approximate and for identification guideline purposes only, not to scale.  
 Compliant with the RICS code of measuring practice

## Area Map



## Energy Performance Graph



These particulars, whilst believed to be accurate are set out as a general outline only for guidance and do not constitute any part of an offer or contract. Intending purchasers should not rely on them as statements of representation of fact, but must satisfy themselves by inspection or otherwise as to their accuracy. No person in this firm's employment has the authority to make or give any representation or warranty in respect of the property.

