

CHARMILL

RESIDENTIAL



Maida Vale, Little Venice, W9

£462

A one-bedroom apartment arranged on the first floor of this well-maintained purpose-built block on Maida Vale benefiting from a 24-hour concierge. This flat comprises a reception/dining room with doors leading to a private balcony, separate fully fitted kitchen and a double bedroom with en-suite bathroom. Stuart Tower is situated within walking distance of the Regents Canal, local shops, restaurants and cafes on Clifton Road together with Maida Vale and Warwick Avenue stations (Bakerloo line). Paddington station is also within easy reach offering Circle, District, Bakerloo and Hammersmith & City lines together with National Rail services and the Heathrow Express providing access to Heathrow Airport in 15 minutes.

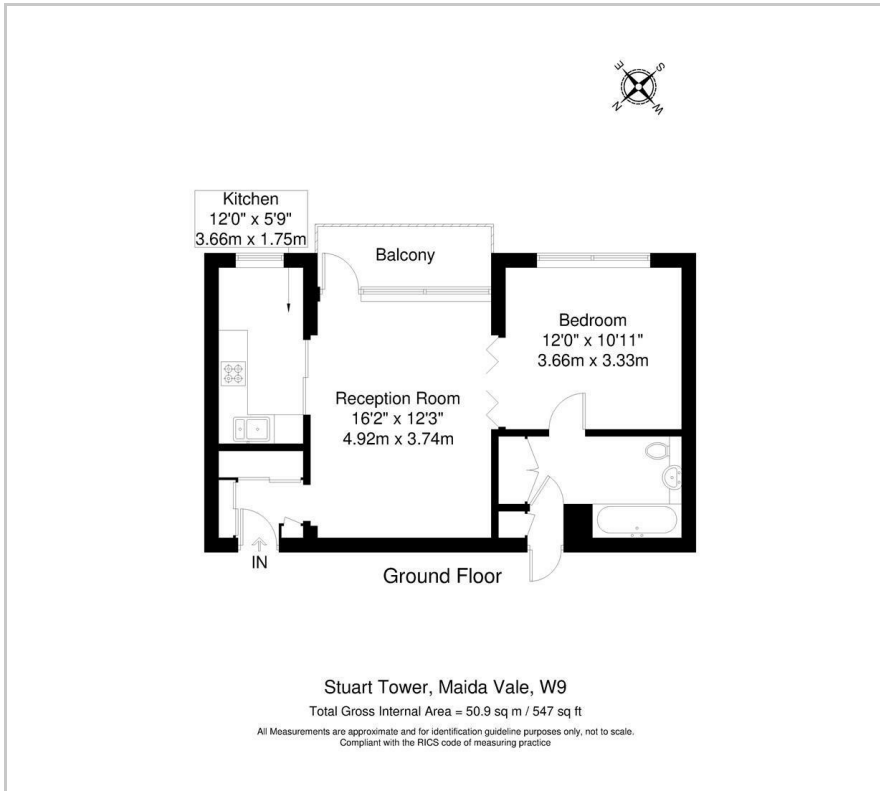
- One bedroom
- First floor
- 24 hour portorage
- Private balcony
- Double glazing
- Direct Acces to communal roof terrace

Viewing

Please contact us on 020 7046 6276 if you wish to arrange a viewing appointment for this property or require further information.



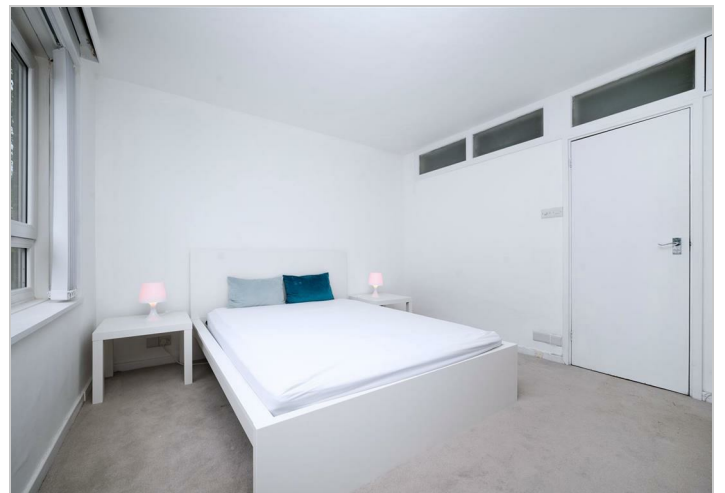
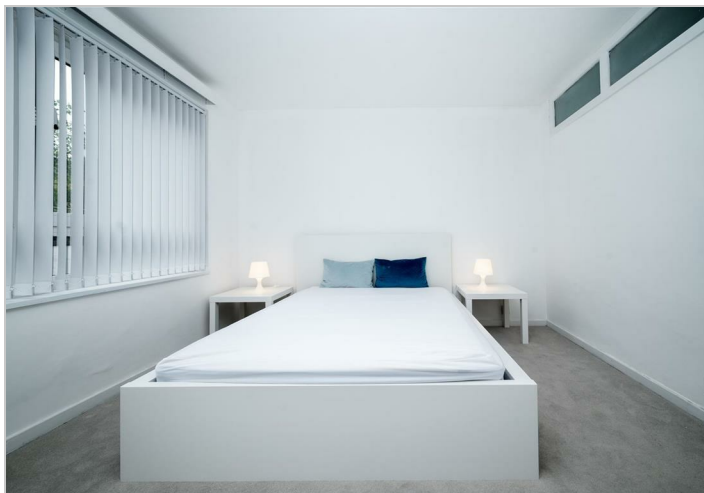
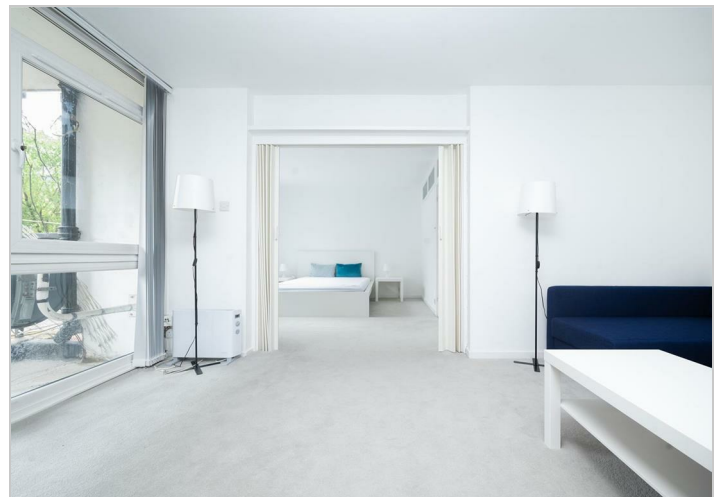
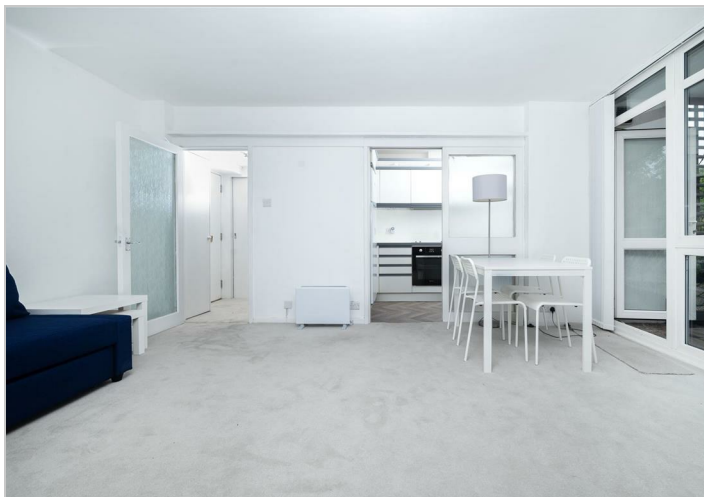
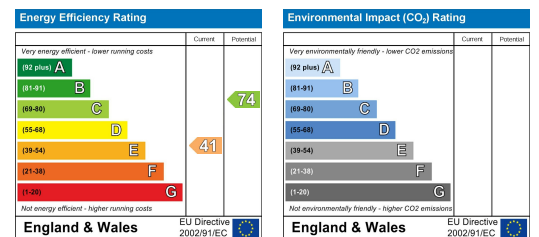
Floor Plan



Area Map



Energy Efficiency Graph



These particulars, whilst believed to be accurate are set out as a general outline only for guidance and do not constitute any part of an offer or contract. Intending purchasers should not rely on them as statements of representation of fact, but must satisfy themselves by inspection or otherwise as to their accuracy. No person in this firm's employment has the authority to make or give any representation or warranty in respect of the property.

020 7046 6276 • lettings@charmillresidential.co.uk • 51 Maida Vale, Little Venice, London W9 1SD
charmillresidential.co.uk