

# CHARMILL

RESIDENTIAL



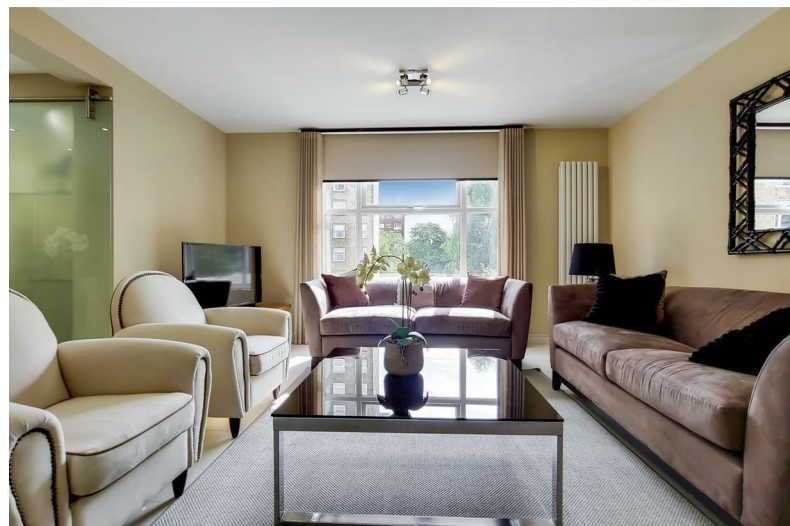
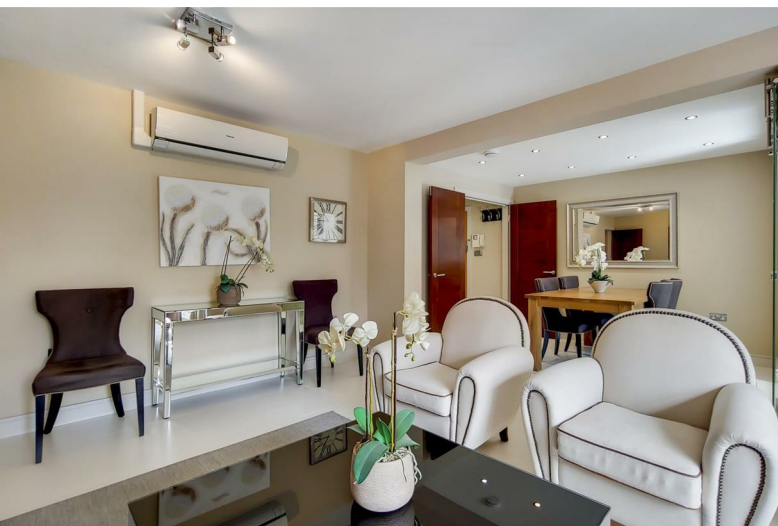
St. Johns Wood Park, London, NW8

£1,300





# St. Johns Wood Park



## Description

A superb three double bedroom apartment available furnished within this gated purpose built block in St John's Wood. The apartment is set on the second floor and comprises a principal bedroom with en-suite bathroom, two further double bedrooms, family shower room, fully fitted integrated kitchen and a large reception/dining room. The apartment further benefits from air conditioning and a 24 hour porter. St John's Wood is one of the most sought after residential areas in London, situated next to Regent's Park offering a peaceful village atmosphere but yet only minutes from London's West End. The apartment is conveniently located for the shopping and transport facilities of St John's Wood and Swiss Cottage (Jubilee line).

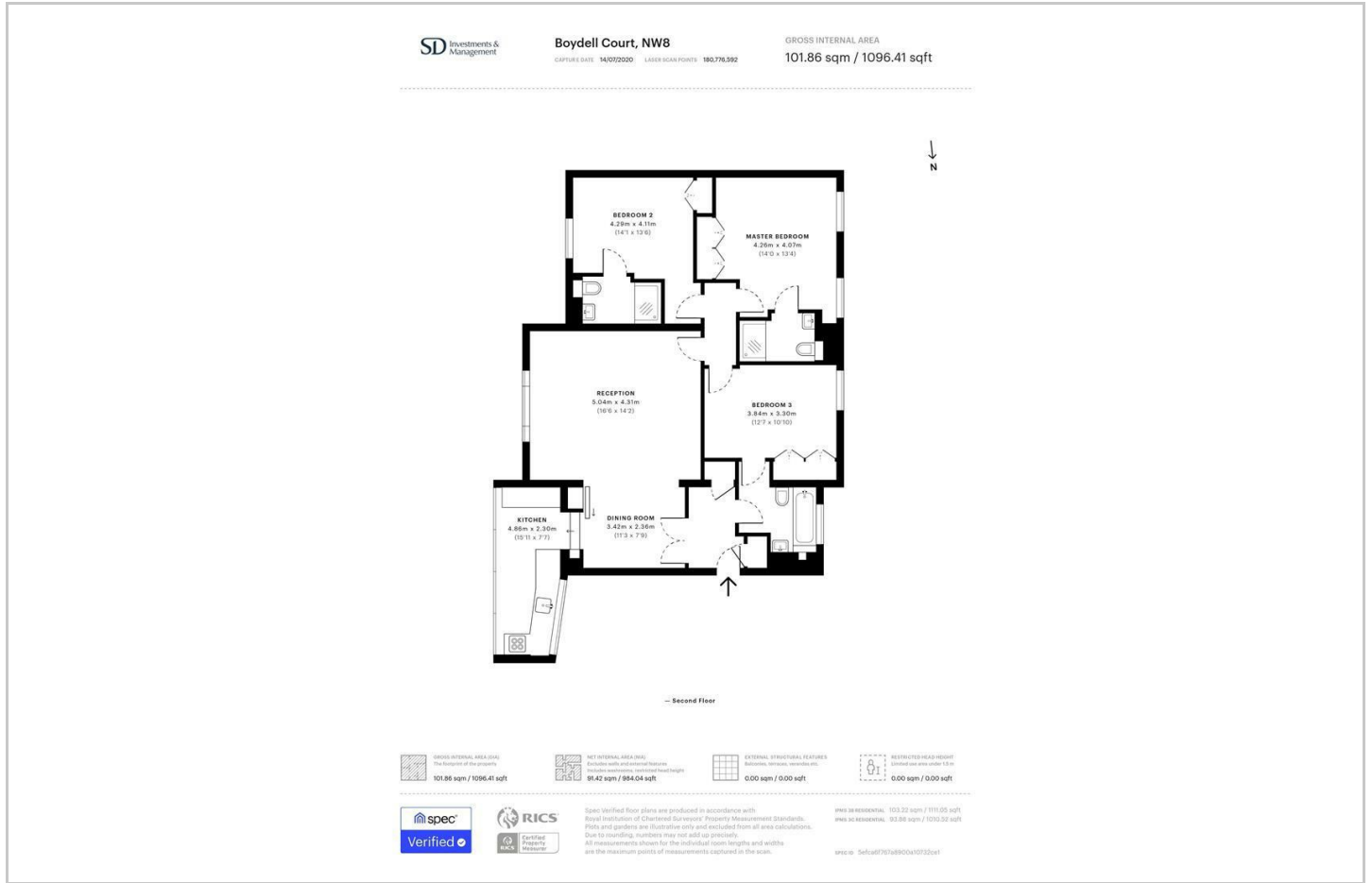
- Three bedrooms
- Second floor
- Furnished/Unfurnished
- Three bathrooms
- 24 hour porter
- Heating & Hotwater included



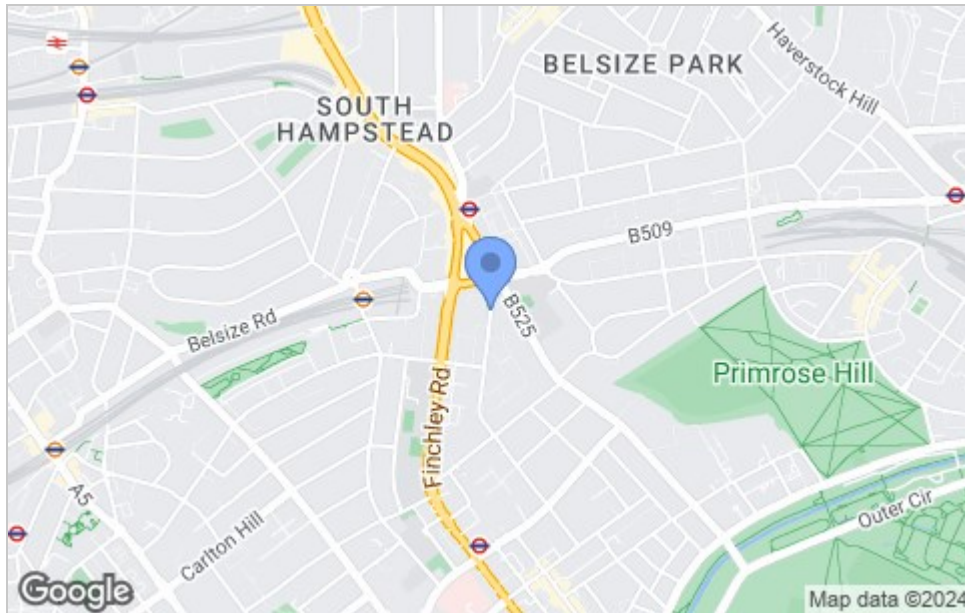




# Floor Plan



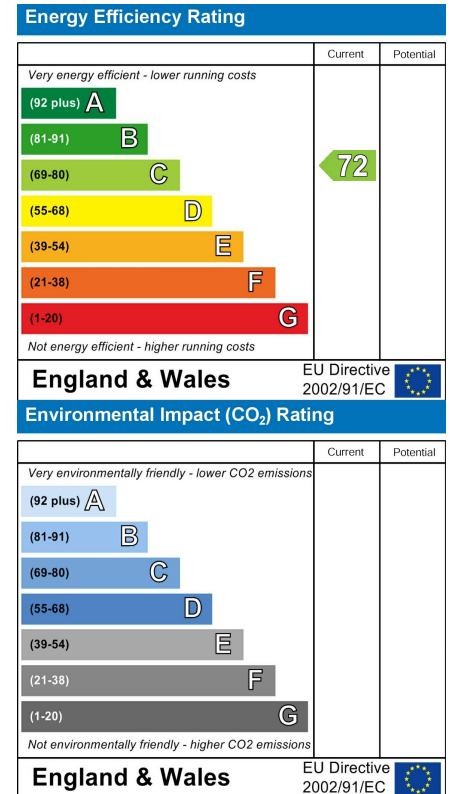
# Area Map



# Viewing

Please contact us on 020 7046 6275 if you wish to arrange a viewing appointment for this property or require further information.

# Energy Efficiency Graph



These particulars, whilst believed to be accurate are set out as a general outline only for guidance and do not constitute any part of an offer or contract. Intending purchasers should not rely on them as statements of representation of fact, but must satisfy themselves by inspection or otherwise as to their accuracy. No person in this firm's employment has the authority to make or give any representation or warranty in respect of the property.

020 7046 6275 • sales@chamillresidential.co.uk • 51 Maida Vale, Little Venice, London W9 1SD  
 charmillresidential.co.uk