

# CHARMILL

## RESIDENTIAL



## Edgware Road, Little Venice W2

£899,950

Situated on the top two floors of an attractive red brick Victorian building is this stunning brand newly refurbished two double bedroom apartment. Meticulously designed throughout with engineered oak wooden flooring this superb property comprises a large reception/dining room perfect for entertaining with large windows which flood the room with natural light, a fully fitted eat-in kitchen, two double bedrooms both with fitted wardrobes, a shower room and a family bathroom. The apartment is located moments from Regent's Canal and Clifton Road which offers a vast array of charming cafes, restaurants and shops.

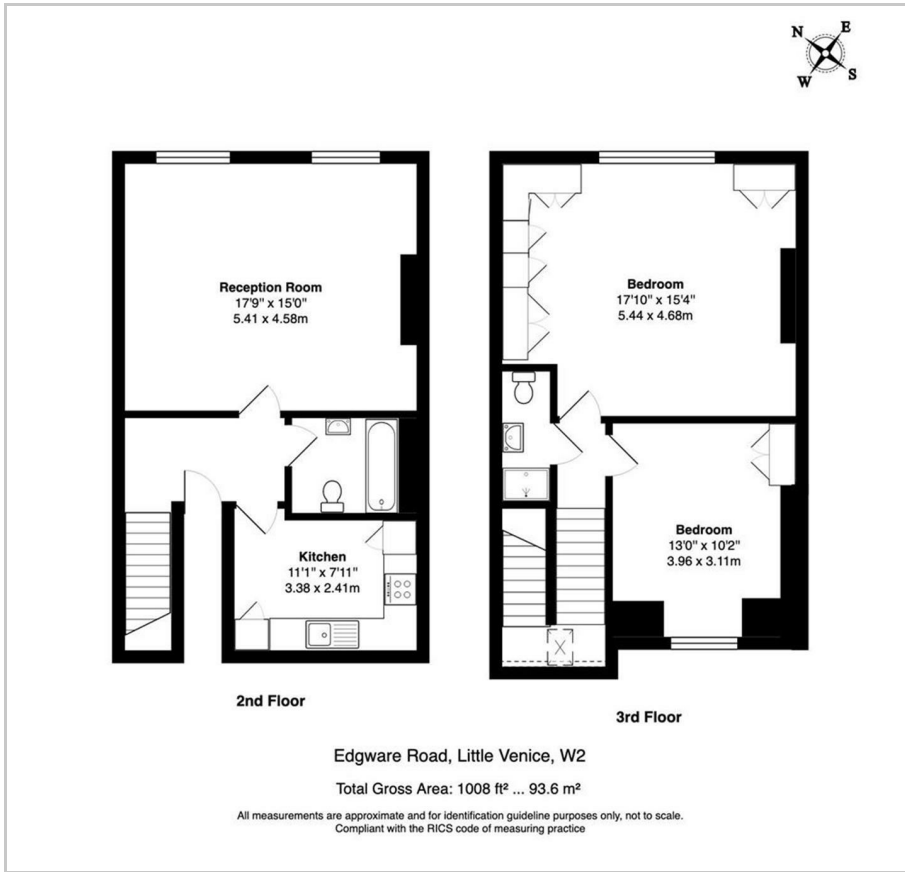
Warwick Avenue station (Bakerloo line) and Edgware Road station (Bakerloo, Circle, District and Hammersmith & City lines) are both just a short stroll away being 0.4 and 0.5 miles away respectively. Paddington station is also within easy reach, offering Circle, District, Bakerloo and Hammersmith & City lines together with National Rail services and the Heathrow Express providing access to Heathrow Airport in 15 minutes. Furthermore the Elizabeth line connecting you to Canary Wharf in just 18 minutes is 0.9 miles away.

### Viewings

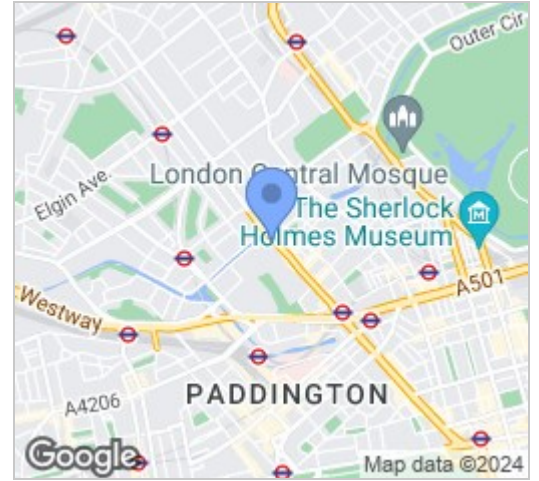
Please contact us on 020 7046 6275 if you wish to arrange a viewing appointment for this property or require further information.



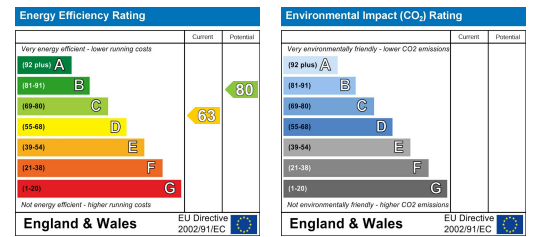
## Floor Plan



## Area Map



## Energy Efficiency Graph



These particulars, whilst believed to be accurate are set out as a general outline only for guidance and do not constitute any part of an offer or contract. Intending purchasers should not rely on them as statements of representation of fact, but must satisfy themselves by inspection or otherwise as to their accuracy. No person in this firm's employment has the authority to make or give any representation or warranty in respect of the property.

020 7046 6275 • sales@chamillresidential.co.uk • 51 Maida Vale, Little Venice, London W9 1SD  
[chamillresidential.co.uk](http://chamillresidential.co.uk)