

CHARMILL

RESIDENTIAL



Pan Peninsula Square, Wapping E14

£425



Pan Peninsula Square



Description

A spacious studio apartment arranged on the ninth floor of an extremely well-equipped purpose-built development in Canary Wharf. The apartment comprises of a large studio room with separate sleeping area, living area with open plan kitchen, shower room and a private balcony. The development further benefits from 24-hour porter, gym and wellness center, indoor swimming pool and a private cinema room. The apartment is walking distance to Canary Wharf underground station (Jubilee Line) and the DLR.

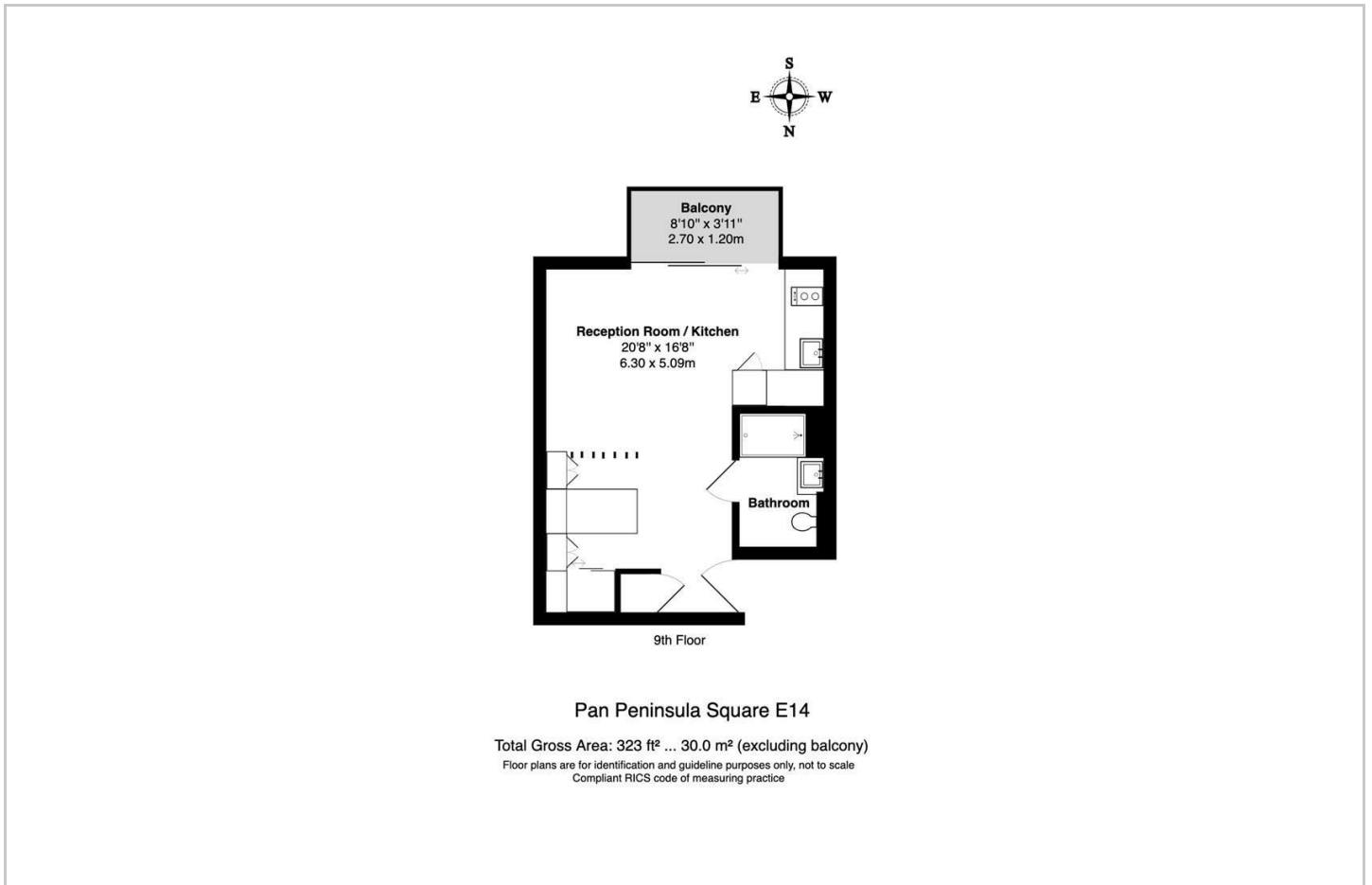
- Studio flat
- Purpose built block
- Porter
- Swimming Pool
- 9th floor
- Balcony
- Gym
- Cinema



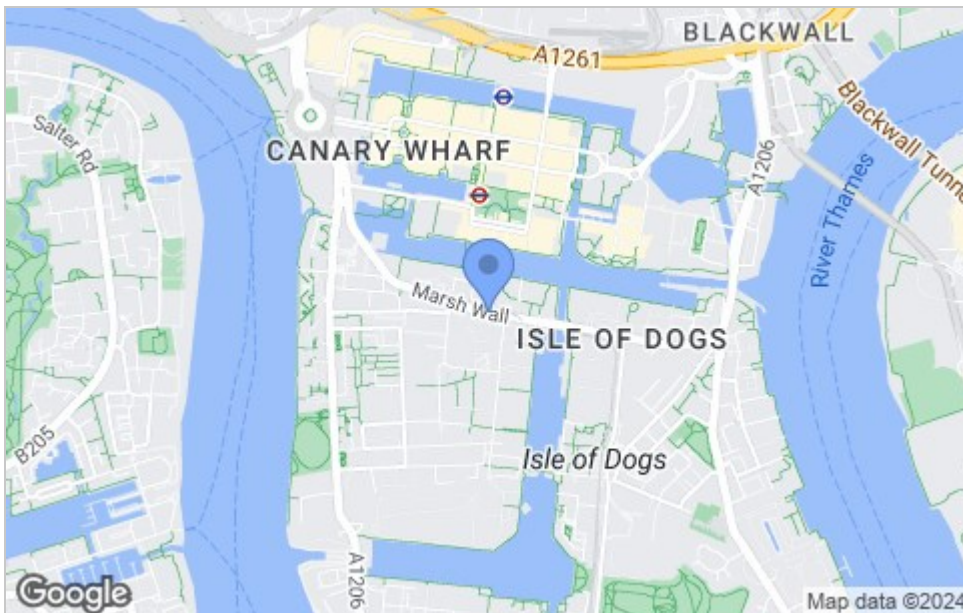
London, E14 9HA



Floor Plan



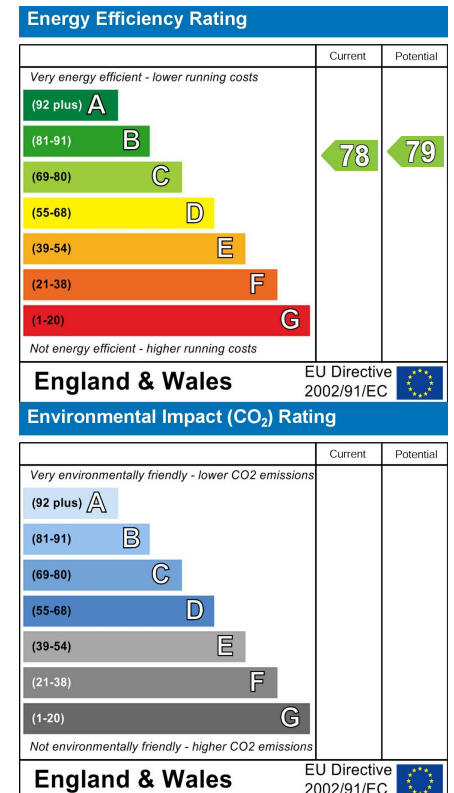
Area Map



Viewing

Please contact us on 020 7046 6275 if you wish to arrange a viewing appointment for this property or require further information.

Energy Efficiency Graph



These particulars, whilst believed to be accurate are set out as a general outline only for guidance and do not constitute any part of an offer or contract. Intending purchasers should not rely on them as statements of representation of fact, but must satisfy themselves by inspection or otherwise as to their accuracy. No person in this firm's employment has the authority to make or give any representation or warranty in respect of the property.

020 7046 6275 • sales@chamillresidential.co.uk • 51 Maida Vale, Little Venice, London W9 1SD
 charmillresidential.co.uk