

CHARMILL

RESIDENTIAL



Lyndhurst Road, Hampstead NW3

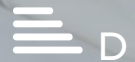
£1,850

A third-floor interior designed three-bedroom lateral apartment within walking distance to Hampstead Village (0.4m). The apartment has been recently refurbished and comprises a spacious reception room, separate eat in kitchen/family room, principal bedroom with en-suite bathroom and built-in storage, two further double bedrooms both with en-suite shower rooms. Further benefits include access to a communal garden and lift facility. Lyndhurst Road is ideally located for both Hampstead (0.4M) & Belsize Park (0.6M) Underground Stations. (Northern line)

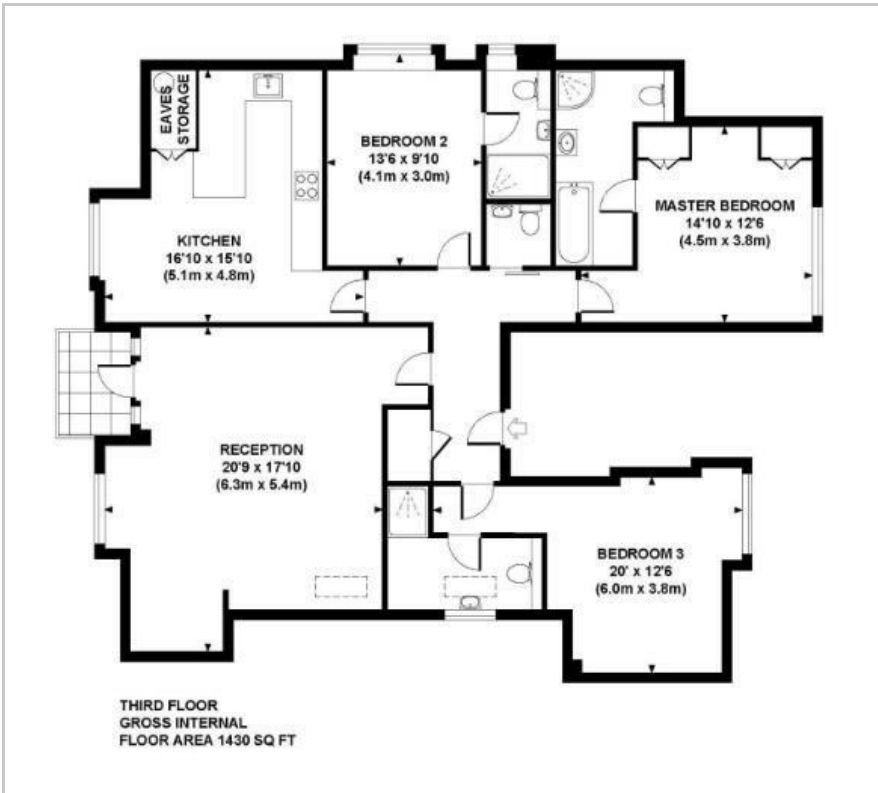
- Three bedrooms
- Three bathrooms
- Eat in kitchen
- Guest WC
- Furnished/Unfurnished

Viewing

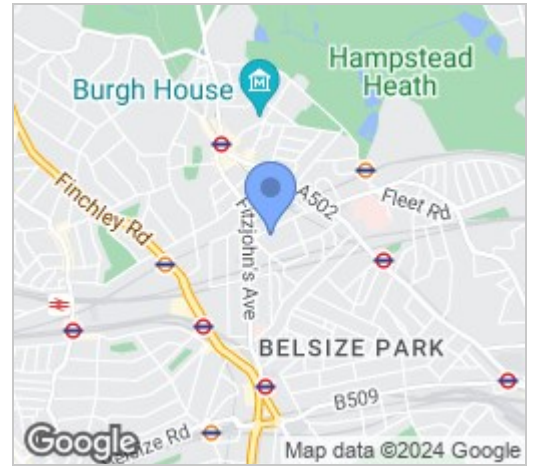
Please contact us on 020 7046 6276 if you wish to arrange a viewing appointment for this property or require further information.



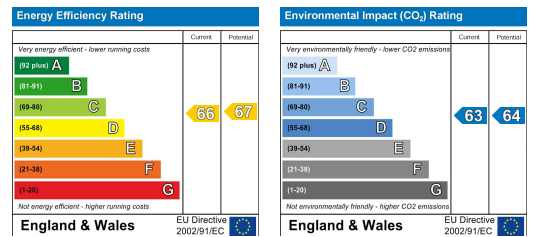
Floor Plan



Area Map



Energy Efficiency Graph



These particulars, whilst believed to be accurate are set out as a general outline only for guidance and do not constitute any part of an offer or contract. Intending purchasers should not rely on them as statements of representation of fact, but must satisfy themselves by inspection or otherwise as to their accuracy. No person in this firm's employment has the authority to make or give any representation or warranty in respect of the property.

020 7046 6276 • lettings@charmillresidential.co.uk • 51 Maida Vale, Little Venice, London W9 1SD
charmillresidential.co.uk