

CHARMILL

RESIDENTIAL



Grove End Road, St John's Wood NW8
£399,950

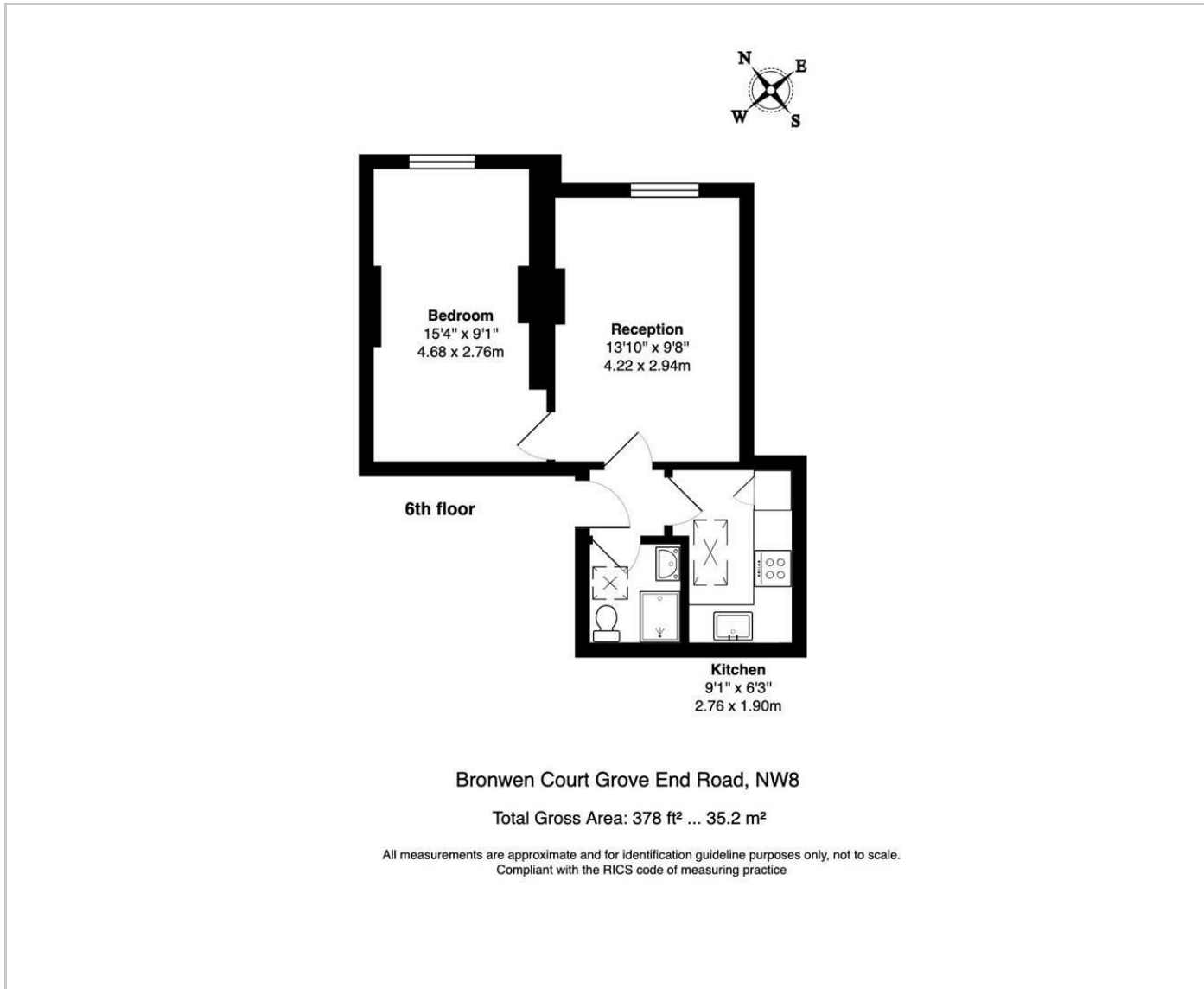


A newly refurbished one bedroom apartment situated on the top floor (with lift) of a well maintained red brick purpose built building. The apartment comprises a reception room and double bedroom both with great views of Lord's Cricket Ground, a separate fully fitted kitchen and a bathroom.

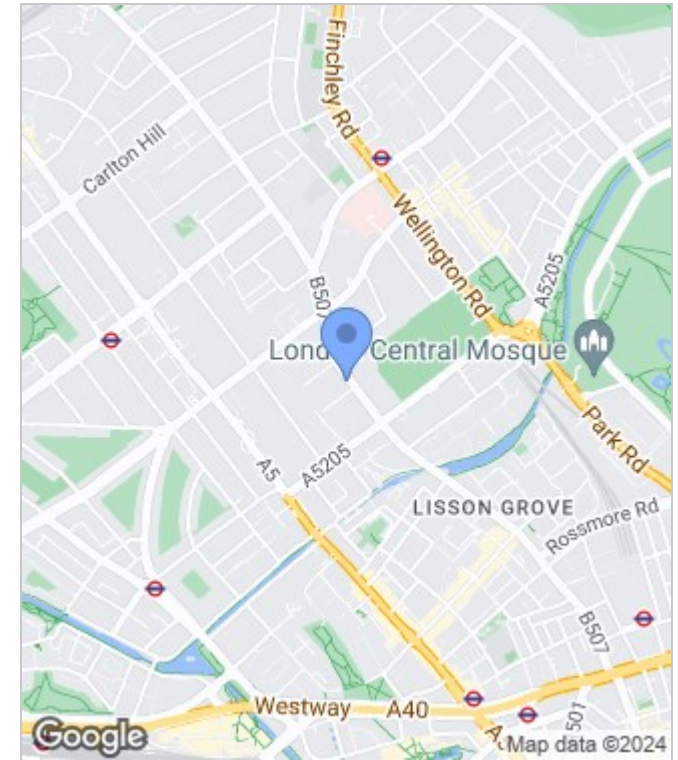
Bronwen Court is located within walking distance of St John's Wood High Street which offers a vast array of fashionable shops, cafes and restaurants as well as Lord's Cricket Ground and the open spaces of Regent's Park. St John's Wood station (Jubilee line) is 0.5 miles away and Warwick Avenue station (Bakerloo line) is 0.6 miles away.



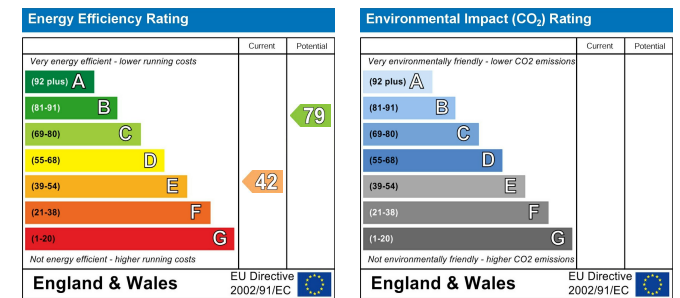
Floor Plan



Area Map



Energy Performance Graph



These particulars, whilst believed to be accurate are set out as a general outline only for guidance and do not constitute any part of an offer or contract. Intending purchasers should not rely on them as statements of representation of fact, but must satisfy themselves by inspection or otherwise as to their accuracy. No person in this firm's employment has the authority to make or give any representation or warranty in respect of the property.

