

CHARMILL

RESIDENTIAL



St. Johns Wood Park, NW8

£1,950



St. Johns Wood Park



Description

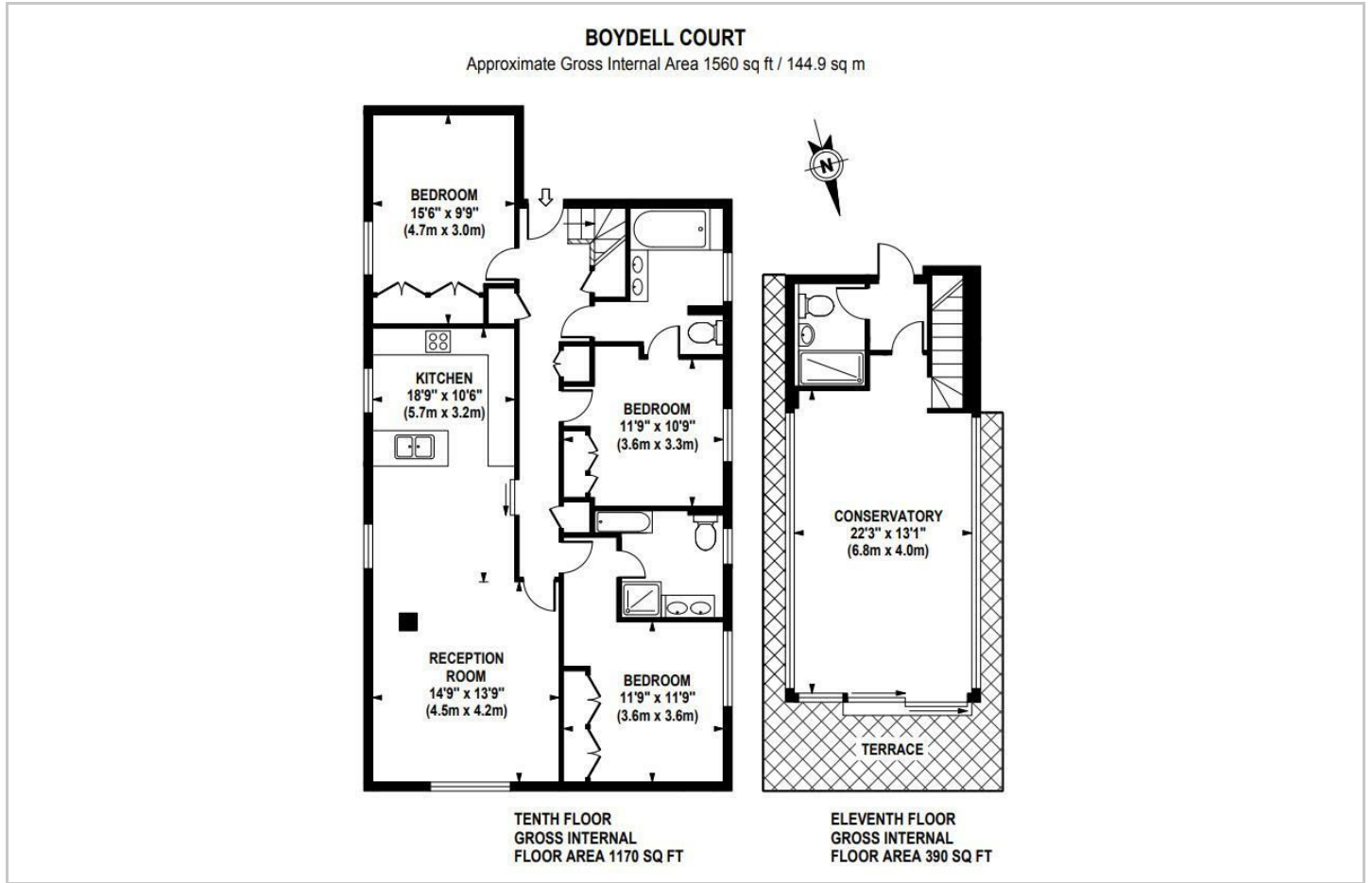
A rare to the market luxury three-bedroom penthouse apartment arranged on the ninth and tenth floors of this sought after portered block on St. John's Wood Park. This beautifully modern interior designed duplex apartment is situated in a secure gated development. The accommodation comprises a principal bedroom with an en suite, two further bedrooms, 2 bathrooms and a large kitchen/dining room. On the upper floor of the apartment is an exceptionally bright reception room with triple aspect views surrounded by a roof terrace with stunning views across London. The flat further benefits from underfloor heating, air conditioning and twenty-four-hour portorage. Garages and off-street parking spaces are available to rent subject to separate negotiation.

- Three bedrooms
- Three bathrooms
- Roof terrace
- Portorage
- Off street parking

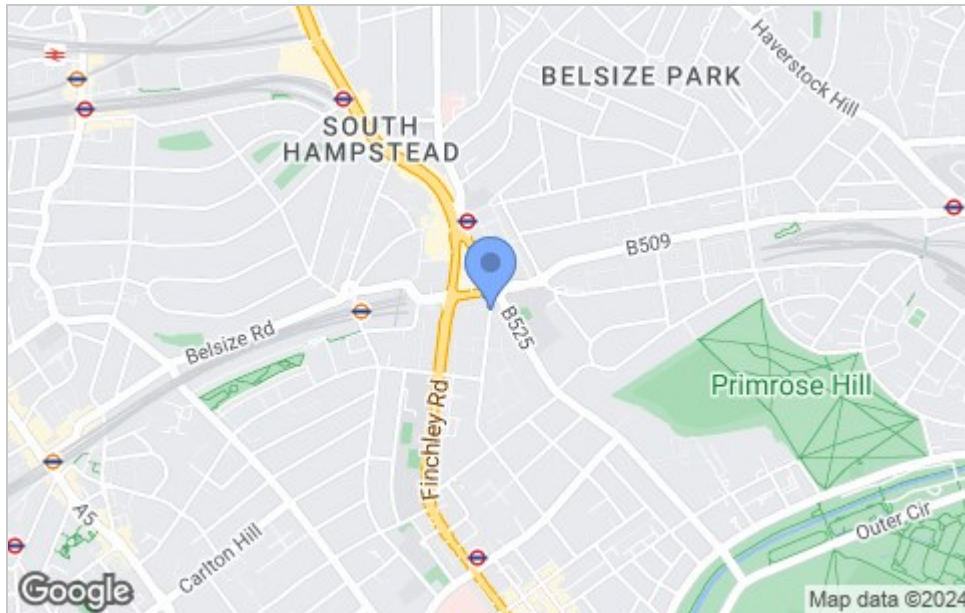




Floor Plan



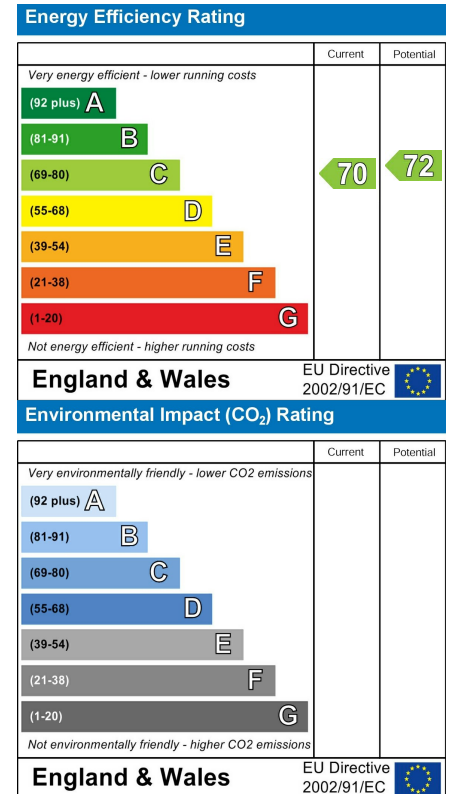
Area Map



Viewing

Please contact us on 020 7046 6275 if you wish to arrange a viewing appointment for this property or require further information.

Energy Efficiency Graph



These particulars, whilst believed to be accurate are set out as a general outline only for guidance and do not constitute any part of an offer or contract. Intending purchasers should not rely on them as statements of representation of fact, but must satisfy themselves by inspection or otherwise as to their accuracy. No person in this firm's employment has the authority to make or give any representation or warranty in respect of the property.

020 7046 6275 • sales@chamillresidential.co.uk • 51 Maida Vale, Little Venice, London W9 1SD
chamillresidential.co.uk