

CHARMILL

RESIDENTIAL



Edgware Road, Paddington W2

£1,760

A luxurious interior designed two bedroom 1st floor apartment set over 764 Sq Ft comprising a large open-plan reception room leading onto a private balcony, a fully integrated kitchen with appliances from Siemens and Miele including oven and induction hobs, large fridge freezer, dishwasher and wine chiller all inset into a composite stone work tops, two double bedrooms with the principal bedroom including an en-suite and a family bathroom. This property further benefits from a large Samsung Smart TVs and Samsung sound bar and is offered with full use of the onsite facilities including Gym, pool, residence lounge area, privet dining room, conference facilities, 24 hour concierge and Cinema room. The apartment is ready to move into with internet already connected. Garret Mansions offers easy access to a number of transport links such as Paddington station (Bakerloo, Hammersmith & City, Circle, District lines and Heathrow Express) and Edgware Road station (Circle, District and Bakerloo lines).

- Two bedrooms
- Open plan kitchen/reception room
- Two bathrooms
- Private balcony
- On-site facilities
- Porter
- Video entry system
- Furnished/unfurnished

Viewing

Please contact us on 020 7046 6276 if you wish to arrange a viewing appointment for this property or require further information.



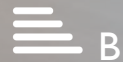
2



1

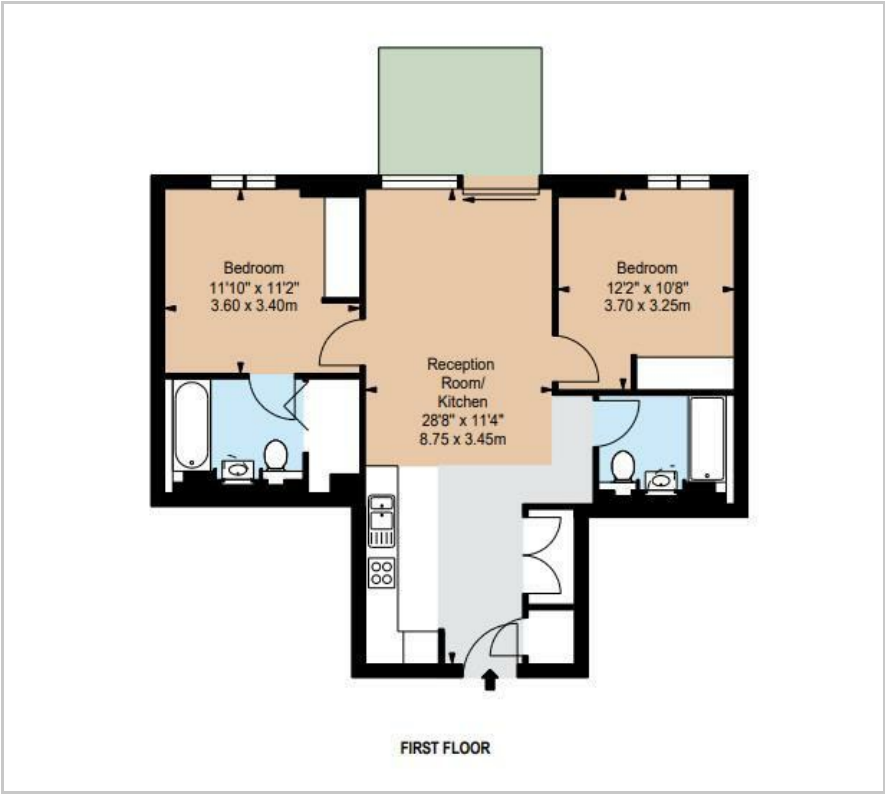


1

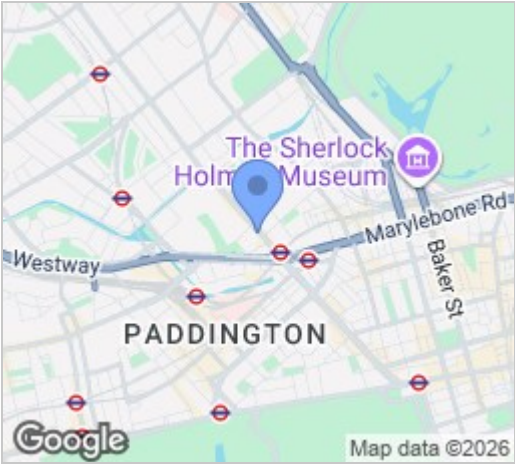


B

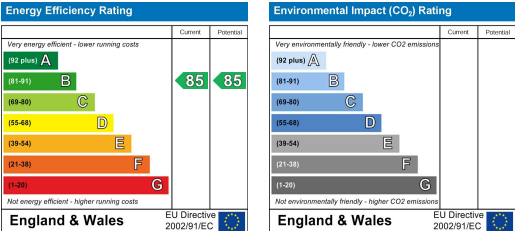
Floor Plan



Area Map



Energy Efficiency Graph



These particulars, whilst believed to be accurate are set out as a general outline only for guidance and do not constitute any part of an offer or contract. Intending purchasers should not rely on them as statements of representation of fact, but must satisfy themselves by inspection or otherwise as to their accuracy. No person in this firm's employment has the authority to make or give any representation or warranty in respect of the property.

020 7046 6276 • lettings@charmillresidential.co.uk • 51 Maida Vale, Little Venice, London W9 1SD
charmillresidential.co.uk