

# CHARMILL

RESIDENTIAL



Edgware Road, London W2

£1,038



# Edgware Road



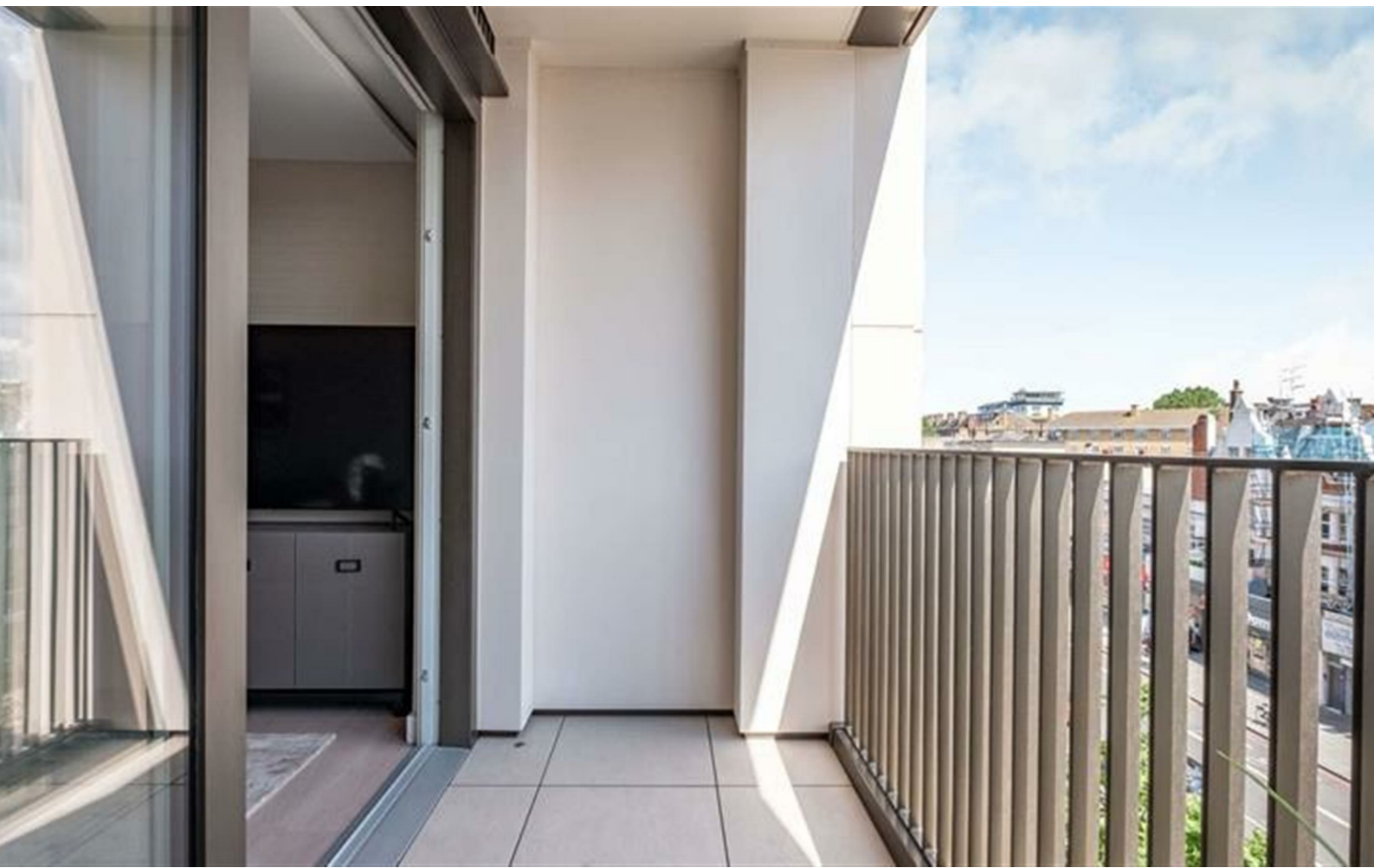
## Description

A luxurious interior designed one-bedroom 1st floor apartment set over 546SqFt comprising a large open-plan reception room leading onto a private balcony. The fully integrated kitchen with appliances from Siemens and Miele including oven and induction hobs, large fridge freezer and dishwasher and wine chiller all inset into a composite stone work tops. The whole apartment also benefits from comfort cooling. This apartment comes complete with large Samsung Smart TVs and Samsung sound bar and is offered with full use of the onsite facilities including Gym, pool, residence lounge area, private dining room, conference facilities, 24 hour concierge and Cinema room. The apartment is ready to move into with internet already connected.

- One bedroom
- Gym/Pool
- Balcony
- Porter
- Comfort cooling



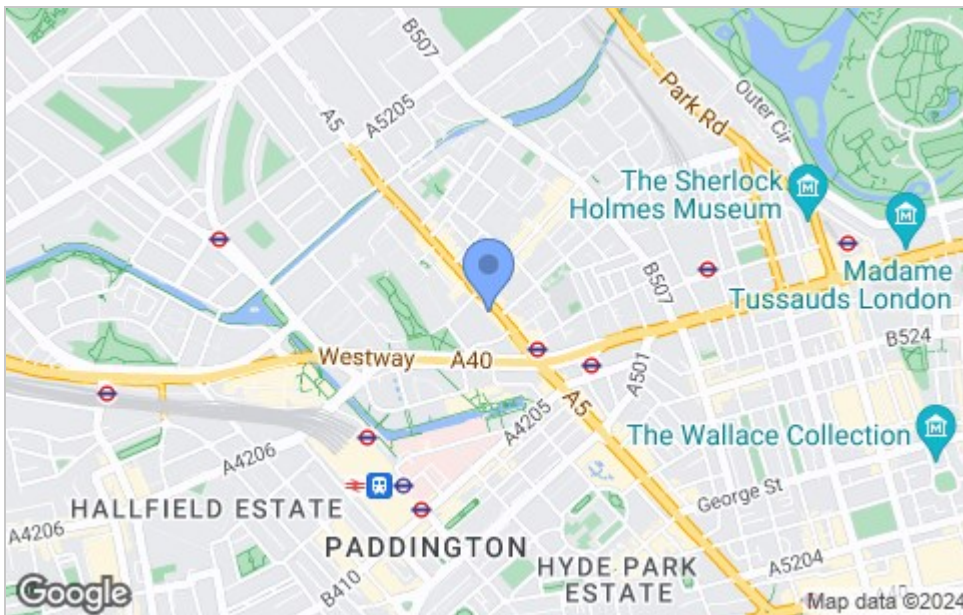




## Floor Plan



## Area Map



## Viewing

Please contact us on 020 7046 6275 if you wish to arrange a viewing appointment for this property or require further information.

## Energy Efficiency Graph

Energy Efficiency Rating		Current	Potential
Very energy efficient - lower running costs			
(92 plus) A			
(81-91) B		83	83
(69-80) C			
(55-68) D			
(39-54) E			
(21-38) F			
(1-20) G			
Not energy efficient - higher running costs			
<b>England &amp; Wales</b>		EU Directive 2002/91/EC	
Environmental Impact (CO <sub>2</sub> ) Rating		Current	Potential
Very environmentally friendly - lower CO <sub>2</sub> emissions			
(92 plus) A			
(81-91) B			
(69-80) C			
(55-68) D			
(39-54) E			
(21-38) F			
(1-20) G			
Not environmentally friendly - higher CO <sub>2</sub> emissions			
<b>England &amp; Wales</b>		EU Directive 2002/91/EC	



These particulars, whilst believed to be accurate are set out as a general outline only for guidance and do not constitute any part of an offer or contract. Intending purchasers should not rely on them as statements of representation of fact, but must satisfy themselves by inspection or otherwise as to their accuracy. No person in this firm's employment has the authority to make or give any representation or warranty in respect of the property.

020 7046 6275 • sales@charmillresidential.co.uk • 51 Maida Vale, Little Venice, London W9 1SD  
charmillresidential.co.uk