

CHARMILL

RESIDENTIAL



West Hampstead, West End Lane NW6

£417,500



West Hampstead, West End Lane NW6



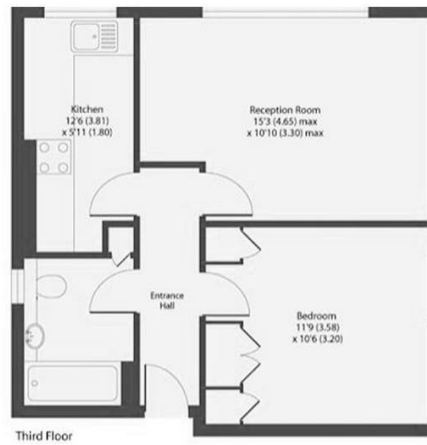
Description

Situated on the third floor (with lift) of an attractive Art Deco style purpose-built block is this bright one bedroom apartment. This well presented property which is in good decorative order throughout comprises a 15 ft reception room, separate fully fitted kitchen, a large double bedroom with fitted wardrobes and a bathroom. The apartment further benefits from use of a well maintained communal garden. Kingswood Court is ideally located on West End Lane moments from the vast array of shops, cafes and restaurants West Hampstead has to offer. West Hampstead stations (Jubilee line and Thameslink) are just 0.5 miles away.



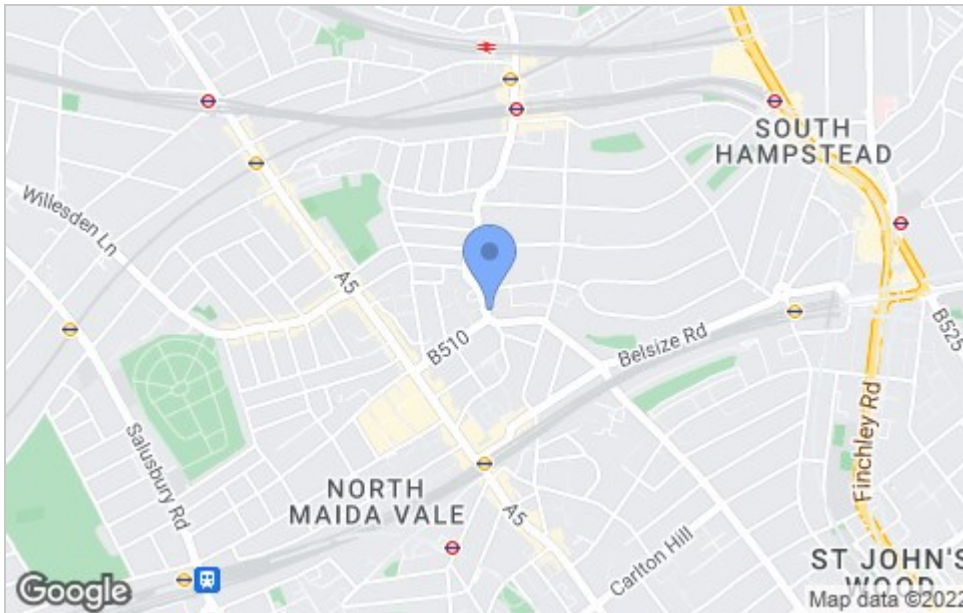


Floor Plan



GROSS INTERNAL 456 SQ FT / 42.3 SQM

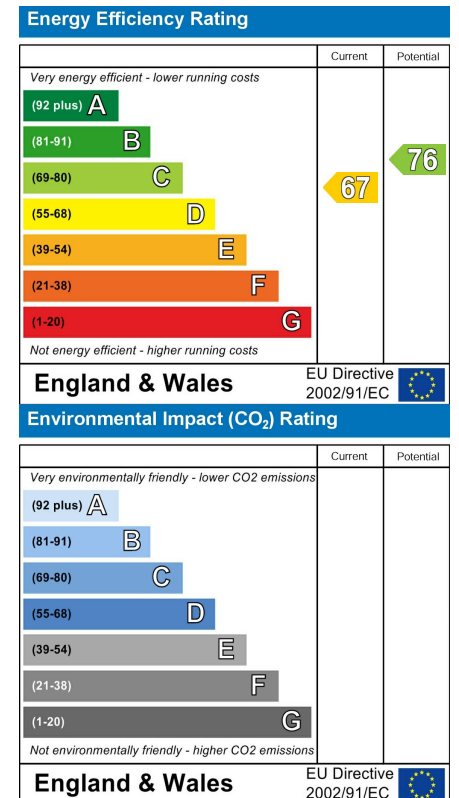
Area Map



Viewings

Please contact us on 020 7046 6275 if you wish to arrange a viewing appointment for this property or require further information.

Energy Efficiency Graph



These particulars, whilst believed to be accurate are set out as a general outline only for guidance and do not constitute any part of an offer or contract. Intending purchasers should not rely on them as statements of representation of fact, but must satisfy themselves by inspection or otherwise as to their accuracy. No person in this firm's employment has the authority to make or give any representation or warranty in respect of the property.

020 7046 6275 • sales@charmillresidential.co.uk • 51 Maida Vale, Little Venice, London W9 1SD
charmillresidential.co.uk