

CHARMILL

RESIDENTIAL



Goldney Road, Maida Vale W9

£525,000

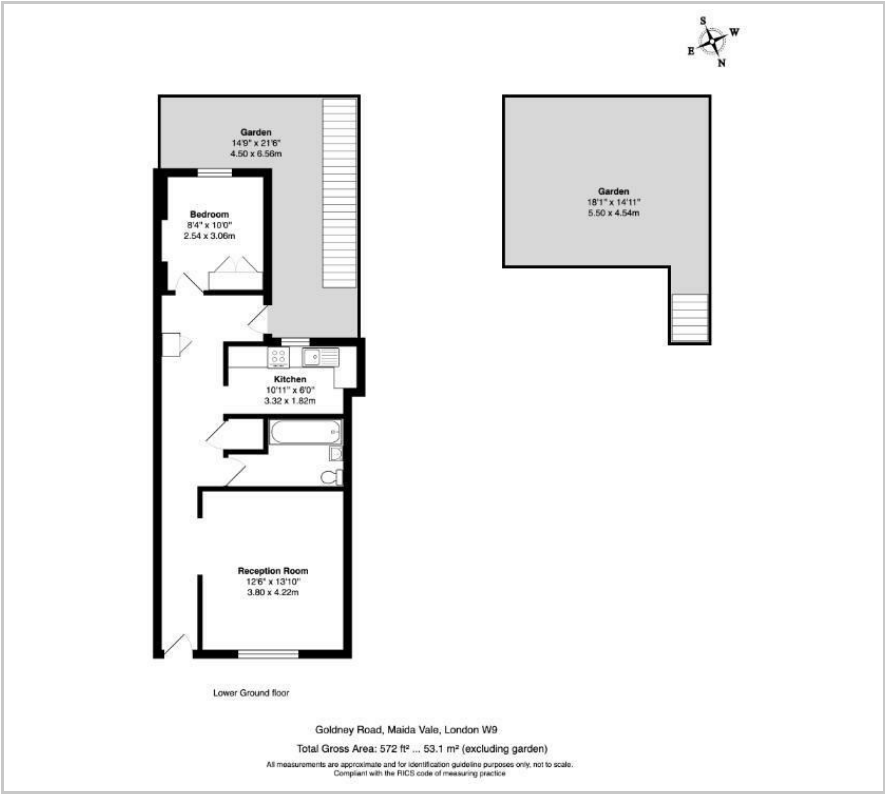
Situated on a quiet tree-lined street in an attractive Victorian conversion is this bright and well proportioned one bedroom garden apartment. This charming flat comprises a reception room, separate fully fitted kitchen, a double bedroom, family bathroom and a gorgeous South West facing garden. The apartment further benefits from its own private entrance and ample storage. Goldney Road is very well positioned for all the shops, cafes and restaurants on Elgin Avenue, Lauderdale Parade and Formosa Street as well as the beautifully manicured Paddington Recreation Ground. Westbourne Park station (Circle and Hammersmith & City lines) is 0.5 miles away and Warwick Avenue station (Bakerloo line) is 0.7 miles away. Paddington station is also within easy reach, offering Circle, District, Bakerloo and Hammersmith & City lines together with National Rail services and the Heathrow Express providing access to Heathrow Airport in 15 minutes.

Viewings

Please contact us on 020 7046 6275 if you wish to arrange a viewing appointment for this property or require further information.



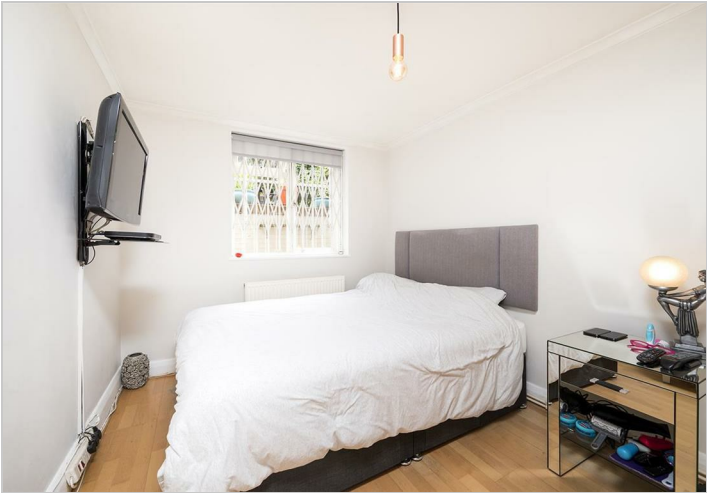
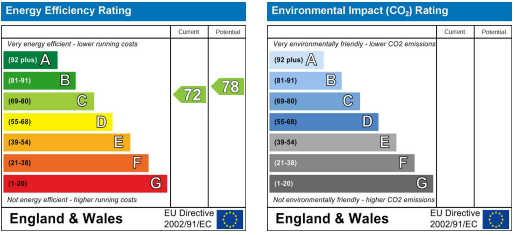
Floor Plan



Area Map



Energy Efficiency Graph



These particulars, whilst believed to be accurate are set out as a general outline only for guidance and do not constitute any part of an offer or contract. Intending purchasers should not rely on them as statements of representation of fact, but must satisfy themselves by inspection or otherwise as to their accuracy. No person in this firm's employment has the authority to make or give any representation or warranty in respect of the property.

020 7046 6275 • sales@charmillresidential.co.uk • 51 Maida Vale, Little Venice, London W9 1SD
charmillresidential.co.uk