



Park Piece, Warwick, CV35 0NT

**SHELDON
BOSLEY
KNIGHT**

LAND AND
PROPERTY
PROFESSIONALS

Property Description

****OPEN DAY: Saturday 14th September 2024
Between 10AM -12PM. Please ring now to
book an appointment****

We're pleased to be able to bring to the market this fabulous sized three bedroom end of terrace property. With a driveway to the front and a generous sized rear garden it has plenty of potential scope for extending (subject to planning permission)

Located close to the centre of the sought after village of Kineton and all of it's shops and amenities, this is a property not to be missed!

The accommodation comprises in brief: Hallway, Living room, Dining room, Kitchen, WC, three bedrooms and a family Bathroom.

Kineton is a well-regarded village situated below the Edgehill escarpment and the site of the Civil War battle in 1642. There are a wide variety of local amenities in the village including a newly modernised High School and Primary School, a Playgroup, three Churches, two Doctors' Surgeries, a Hairdressers and Barbers as well as an Optician, Vets, Florist with Garage Themed Cafe, Post Office, small Supermarket, Home Furnishing Shop. There is a Public House, an Artisan Baker, Sports & Social Club and a Village Hall. Award winning Fish and Chip Shop and Indian Brasserie. Kineton enjoys a friendly community spirit within the village with a varied calendar of social events taking place.



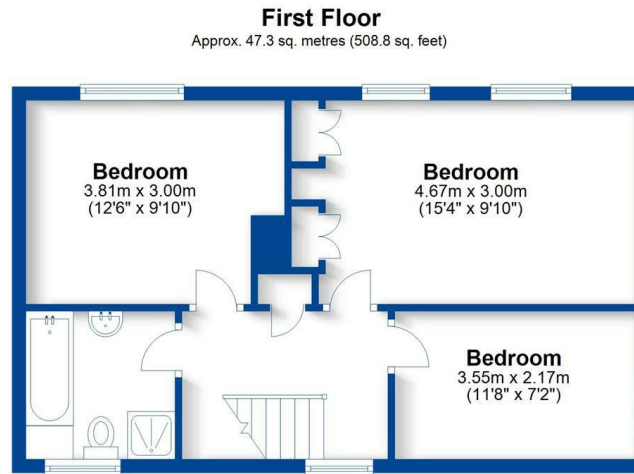
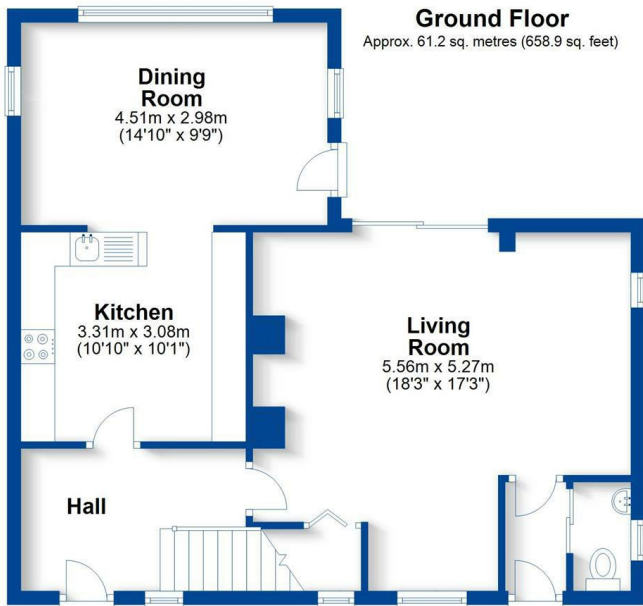


Key Features

- Village Location
- Potential to extend (subject to planning permission)
- Two reception rooms
- Three bedrooms and a family bathroom
- Generous rear garden
- EPC rating - E
- Good level of amenities in the village

**Offers Over
£300,000**





Total area: approx. 108.5 sq. metres (1167.7 sq. feet)

This plan is for illustration purposes only and should not be relied upon as a statement of fact
Property of Sheldon Bosley Knight not to be reproduced



EPC Rating - E

Tenure - Freehold

Council Tax Band - C

Local Authority
Stratford On Avon District Council



We routinely refer clients to both our recommended legal firm and a panel of financial services providers. It is your decision whether you choose to deal with these companies. In making that decision, you should know that we receive a referral fee.

**SHELDON
BOSLEY
KNIGHT**

LAND AND
PROPERTY
PROFESSIONALS