

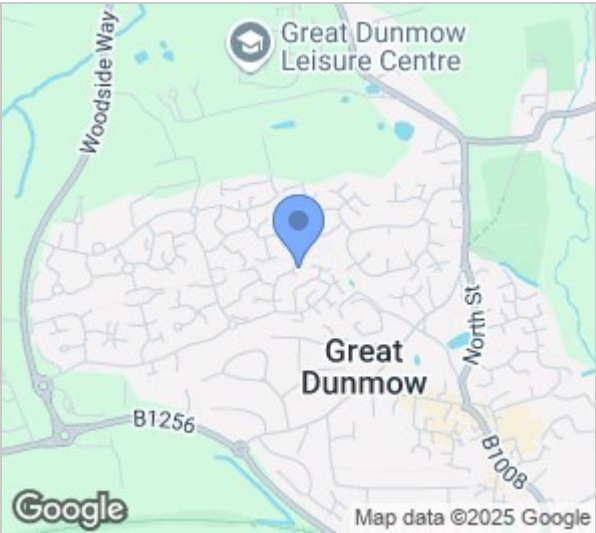
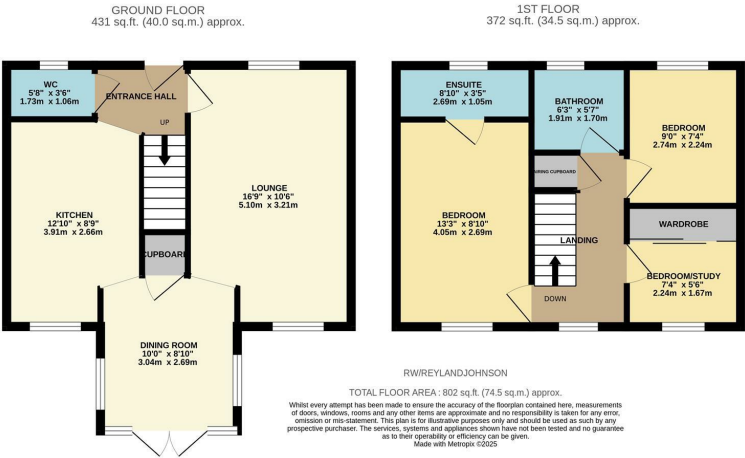


Rowan Way, Dunmow, CM6 1PW
£400,000



Rowan Way, Dunmow, CM6 1PW

Offered with no onward chain is this three bedroom end terrace home, located in a quiet cul-de-sac and includes beautiful views over a green and a garage and driveway. On the ground floor there is a large lounge, bright dining room, kitchen with a range of fitted wall and base units with integrated appliances and a cloakroom/WC. Upstairs there are three bedrooms, with an en-suite to the master and a family bathroom with a white three piece suite. The south facing rear garden is mainly laid to lawn with a patio area, side access and access to the garage and driveway. Rowan Way is located just off Willow Road in the popular area of Dunmow, with local schools, shops and open fields close by.



Energy Efficiency Rating			Environmental Impact (CO ₂) Rating		
	Current	Potential		Current	Potential
Very energy efficient - lower running costs			Very environmentally friendly - lower CO ₂ emissions		
(92 plus) A		90	(92 plus) A		
(81-91) B			(81-91) B		
(69-80) C			(69-80) C		
(55-68) D			(55-68) D		
(39-54) E			(39-54) E		
(21-38) F			(21-38) F		
(1-20) G			(1-20) G		
Not energy efficient - higher running costs			Not environmentally friendly - higher CO ₂ emissions		
England & Wales			England & Wales		
EU Directive 2002/91/EC			EU Directive 2002/91/EC		

These particulars, whilst believed to be accurate are set out as a general outline only for guidance and do not constitute any part of an offer or contract. Intending purchasers should not rely on them as statements of representation of fact, but must satisfy themselves by inspection or otherwise as to their accuracy. No person in this firms employment has the authority to make or give any representation or warranty in respect of the property.

T. 01279 598598 E. sawbridgeworth@rjestateagents.co.uk

4 Hoestock Road, Sawbridgeworth, Hertfordshire, CM21 0DY www.rjestateagents.co.uk