

pedestrian gate leads out to the parking space and garage access. Access to the side where you will find a lovely private area ideal for a table and chairs.



front door. A gate provides access to the side gardens providing an ideal storage area. Garden shed. Access to the rear garden.

### Garage

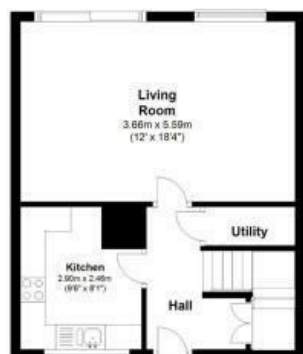


Accessed via an up and over door. Light and power. Side pedestrian door. Part of the garage has been partitioned off to create a gym space but this could easily be put back to a full sized garage if required.

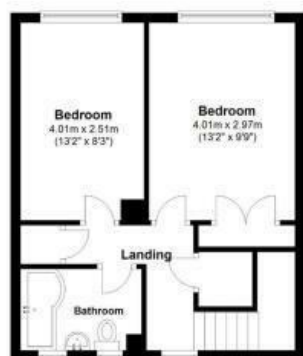
### Front Garden

Enclosed with lawns either side of a central pathway leading to the

Ground Floor



First Floor



**Tenure:** Freehold  
**Floor area:** 990.29 sq ft  
**Tax Band:** B



### Local Authority: North Somerset

These particulars, whilst believed to be accurate are set out as a general outline only for guidance and do not constitute any part of an offer or contract. Intending purchasers should not rely on them as statements of representation of fact, but must satisfy themselves by inspection or otherwise as to their accuracy. No person in this firm's employment has the authority to make or give any representation or warranty in respect of the property.

# Gino's Estate Agents



## 9 Strawberry Close, Nailsea, North Somerset, BS48 4NX

**£285,000**

**NO ONWARD CHAIN.** An extremely well presented and generous sized, 2 DOUBLE BEDROOM semi detached home which would ideally suit a First Time Buyer or investor with a potential rental income of around £950 pcm. This desirable property is located in a quiet Cul-de-Sac, situated close to Holy Trinity Church and Grove school and is ideal for those looking to move swiftly. In brief, the accommodation comprises: Entrance Hall, Utility Area, Lounge/Dining Room and a modern Kitchen. On the first floor you will find 2 good-sized Bedrooms and a modern Bathroom whilst externally the property benefits from front, side and rear gardens with a garage and parking area. EPC rating - C.

**Ginos Estate Agents**  
 34 St Marys Park, Nailsea, North Somerset, BS48 4RP  
 T. 01275 540 176 | sales@ginosproperties.co.uk  
 ginosproperties.co.uk



## Entrance Hall



Entered via a UPVC double glazed door. Stairs ascending to the first floor accommodation with useful storage cupboard under. Radiator, telephone point and laminate flooring which runs through into the Kitchen.

## Kitchen

9'6" x 8'1" (2.90m x 2.46m)



Re-fitted with modern range of wall and base units with roll edge worksurfaces and tiling to splashback. Inset stainless steel one and a half bowl single drainer sink unit with mixer tap. Fitted double oven with grill and matching 4 ring ceramic hob and cooker hood over. Space for an upright fridge/freezer and space & plumbing for a dishwasher. UPVC double glazed window to the front.

## Utility Area

5'7" x 2'6" (1.70m x 0.76m)

UPVC double glazed window to the side. Space and plumbing for an automatic washing machine. (this room could convert to a downstairs cloakroom if required as others have done in the road).

## Lounge/Dining Room

18'4 x 12 (5.59m x 3.66m)



A light, bright and spacious room via UPVC double glazed window and UPVC double glazed patio doors leading to the rear garden. LVT flooring. Telephone and television points. Space for a Dining table.



## First Floor Landing

UPVC double glazed window to the front. Built in overstairs storage cupboard providing additional hanging and storage space. Built in airing cupboard containing a 'Worcester' Combination boiler. Access to the insulated loft.

## Bedroom 1

13'2 x 9'9 (4.01m x 2.97m)



UPVC double glazed window to the rear. Large built in wardrobe with double doors providing ample hanging and storage space. Radiator. Laminate flooring.



## Bedroom 2

13'2 x 8'3 (4.01m x 2.51m)



UPVC double glazed window to rear. Radiator

## Bathroom

8'1" x 5'3" (2.46m x 1.60m)



Fitted with a modern white suite comprising: "P" shape panelled bath with thermostatic shower unit with glazed side screen. Low level close coupled wc and pedestal wash hand basin. Radiator, ceiling spotlights and 2 UPVC double glazed windows to the front.

## Outside

### Rear & Side Garden



Enclosed by timber panel fencing, the rear garden consists of 2 main areas being laid to lawn and patio area with flower borders. A